



And Beyond 2020

Extending Opportunities for Students with Disabilities

Educational Service Center of Northeast Ohio

State Support Team Region 3

Essex Place

6393 Oak Tree Boulevard

Independence, OH 44131

216-524-3000

216-446-3829 (fax)

www.escneo.org

**State Support
Team**



**EDUCATIONAL
SERVICE
CENTER**
of Northeast Ohio

Introduction

Twenty years ago the Cuyahoga Special Education Regional Resource Center along with the NE Ohio Parent Mentors, the Ohio Coalition for the Education of Children with Disabilities, and the Arc of Greater Cleveland came together to offer families in the greater Cleveland area an opportunity to share resources, contacts and their passion for independence, self-determination and community inclusion for students and young adults with diverse needs. The purpose of their collaboration was to ensure that students have access to opportunities that expands their academic and social-emotional needs. Today the State Support Team of Region 3, along with Educational Service Center of Cuyahoga, continue to work with school districts, community partners and families to offer professional development focused on Universal Design for Learning, Positive Behavior and Interventions and Supports, and Evidenced Based Early Literacy and Post-Secondary Transition supports. Thank you to the Greater Cuyahoga area for your continued support!

Summer is just around the corner and parents are beginning to think about what activities will be available to offer their children for the summer as well as throughout the year. This familiar task is often a little more challenging for families of children with disabilities. In fact, individuals with disabilities may benefit from recreational opportunities throughout the year.

The State Support Team Region 3 (SST3) offers the 2020 Summer and Beyond Directory as a resource to parents, family members and school district personnel about extended opportunities around the Cuyahoga County area. Please visit our website www.escneo.org throughout the summer for updates to our directory.

The information in this directory is meant to be used as a reference and should not be considered comprehensive or an endorsement of any program or product. We do not make recommendations concerning the quality of these programs and strongly encourage readers to call the contact persons listed for clarification and explanation of their programs.

You may also contact your local community recreation departments, schools, county library branches, YMCA, YWCA, Scouts of America, and local cultural arts and entertainment centers for additional programs or activities.

Keep this book handy for NEXT YEAR'S planning!

Terri McIntee, MA
Theresa Richardson
SST3 Staff
Karen Reynolds

Editor
Compilation & Updates
Proofreaders
Production

Special Thanks to our Collaborative Partners for this event:



This activity is funded in whole or part by IDEA, Title VI B, and Grants to States through Ohio Department of Education grants to Educational Service Center of Northeast Ohio Fiscal Agent for State Support Team Region 3.



TABLE OF CONTENTS

EXCEPTIONALITIES DEFINITIONS AND CODES	10
GUIDE TO PROGRAMS AND POPULATIONS SERVED	12
ACADEMIC PROGRAMS	18
ABA OUTREACH SERVICES 1:1 THERAPY	19
ABA PROVIDER	20
CAMP L.U.C.K.Y. – Language Unlocks Communication for Kids – Yes!	20
C.A.V.S. (Community Engagement, Academic Focus, Vocational Skills, Social Interaction) Lakeland Satellite Program	21
COVER TO COVER	22
EARLY LEARNING	22
EXTENDED SCHOOL (ESY) PROGRAM	23
HANDWRITING GROUPS	23
JOB READINESS.....	24
KINDERGARTEN READINESS.....	24
KOINONIA ENTERPRISES	25
LITTLE LEARNERS SOCIAL GROUP (SOLUTIONS BEHAVIORAL CONSULTING)	26
NORTH COAST TUTORING SERVICES In-home Tutoring	27
POST-SECONDARY CAREER EXPLORATION PROGRAM.....	28
POST-SECONDARY COLLEGE PROGRAM FOR STUDENTS WITH DISABILITIES.....	28
SUMMER AT CHAGRIN - TOWNSEND.....	29
SUMMER YOUTH WORK EXPERIENCE.....	29
THE D.A.M. (DIAGNOSE, APPLY, MOTIVATE) PROGRAM.....	30
THE SILVER LINING GROUP.....	30
THE WHOLE KID (Private Tutoring).....	31
TOWNSEND LEARNING CENTER.....	31
ART AND THERAPEUTIC PROGRAMS	32
ABILITIES FIRST FINE MOTOR FUN CAMP.....	33
ABILITIES FIRST WRITE 4 U CAMP	34
ABILITIES FIRST WRITE-ON INTO KINDERGARTEN	35
ADAPTED DANCE PROGRAM @ BEYOND WORDS: MUSIC & DANCE CENTER	35
ADAPTED MUSIC LESSONS @ BEYOND WORDS: MUSIC & DANCE CENTER	36
ADAPTED MUSIC LESSONS, MUSIC THERAPY ENRICHMENT CENTER, INC.	37
AQUATIC THERAPY CONNECTION	37
ART-TISM.....	38
ART THERAPY STUDIO	38
BALDWIN WALLACE SPEECH CLINIC	39

CAMP A.B.C. (ALWAYS BE COMMUNICATING)	40
CAMP LEAFBRIDGE.....	41
CAMP SUNTASTIC DAY CAMP	42
CAMP WONDER.....	43
CATALYST FARM SUMMER CAMP	44
CENTER FOR MUSIC THERAPY @ THE MUSIC SETTLEMENT	44
CONNECT AND MOVE	45
CONNECT AND PLAY	45
COUNSELING AT CATALYST FARM.....	46
CREATIVE ARTS THERAPIES, Beck Center for the Arts	46
D.E.A.F. — DEDICATED TO THE ELIMINATION OF ASSUMPTIONS AND FALLACIES	47
ENCOURAGING CONNECTIONS.....	48
EQUINE ASSISTED LEARNING.....	48
FEEDING FOUNDATIONS.....	49
FLIGHT.....	50
FLOURISH	50
HEARING IMPAIRED: AUDITORY, SPEECH-LANGUAGE THERAPY	51
INSPIRE	52
LAKESHORE SPEECH THERAPY, LLC.....	52
MUSIC & DANCE SUMMER CAMPS @ BEYOND WORDS	53
MUSIC THERAPY @ BEYOND WORDS: MUSIC & DANCE CENTER	54
MUSIC THERAPY: MUSIC THERAPY ENRICHMENT CENTER, INC.	55
OT, PT AND SLP AT CATALYST FARM	56
PEDIATRIC NEUROPSYCHOLOGY CENTER RAINBOW BABIES & CHILDREN HOSPITAL	56
PONY TALES FARM.....	57
PSYCHOLOGICAL SERVICE	57
RAZORSHARKS SWIM TEAM	58
RECREATIONAL RESPITE PROGRAM (DD).....	59
ROYALTON MUSIC CENTER	60
SMALL GROUPS AT CATALYST FARM.....	61
S.M.I.L.E. SUMMER CAMP (SPECIAL MEMORIES INCLUDE LAUGHTER AND ENRICHMENT SUMMER CAMP).....	61
SOCIAL SKILLS/BEHAVIORAL GROUPS.....	62
SPEECH AND LANGUAGE THERAPY BY SOLUTIONS BEHAVIORAL CONSULTING	62
SPEECH THERAPY (INDIVIDUAL).....	63
SUMMER SESSION SKILLS/BEHAVIORAL GROUPS.....	63
SUMMER SOCIAL THINKING	64

THE LEARNING GROOVE: PARENT/CHILD MUSIC CLASS @ BEYOND WORDS MUSIC & DANCE CENTER	65
THE M.I.L.E. (MANAGEMENT FOR INDEPENDENT LIVING ENRICHMENT) EXPLORER PROGRAM	65
THE SCHOOL OF DANCING WHEELS: Classes & Summer Camps for Students of All Abilities	66
THERAPEUTIC RIDING	67
THRIVE CAMP.....	67
WESTERN RESERVE SPEECH & LANGUAGE PARTNERS (W.R.S.L.P.).....	68
ZEN AND THE ARTS CAMP FOR ALL KIDS	68
DAY CAMP PROGRAMS	69
ABC'S DAY PROGRAM	70
ADAPTIVE SPORTS OHIO DREAM CAMP 2020	71
AKRON ROTARY CAMP FOR CHILDREN WITH SPECIAL NEEDS.....	71
ASD FAMILY CAMP.....	72
BELIEVERS ACADEMY SUMMER ENRICHMENT PROGRAM.....	72
BEYOND CAMP	73
BRIGHT FUTURES SUMMER DAY program	73
CAMP INSIGHT – SPECIAL EDITION.....	74
CAMP PARADISE	75
CAMP SBC BY SOLUTIONS BEHAVIORAL CONSULTING.....	75
CAREER EXPLORATION	76
CATHOLIC CHARITIES CAMP HAPPINESS.....	77
CHEERFUL DAY CAMP.....	78
CIRCLE OF FRIENDSHIP	78
EXPRESS FOR SUCCESS	79
HELP FOUNDATION INC. SUMMER PROGRAM.....	79
IN-N-OUT OF THE CITY SUMMER CAMP	80
JONI AND FRIENDS SHAWNEE FAMILY RETREATS.....	81
KRAZY KAMP.....	81
LAKE SHORE DAY CAMP	82
LIFE STEPS	82
MIDDLEBURG EARLY EDUCATION CENTER SUMMER SPEECH CAMP	83
NEW AVENUES SUMMER CAMP	84
PASS (PERFORMING ARTS CAMP & Social Skills) CAMP @ BEYOND WORDS	84
SENSATIONAL DAY PROGRAM.....	85
SUMMER TREATMENT PROGRAM.....	86
RESIDENTIAL CAMP PROGRAMS	87
AKRON ROTARY CAMP FOR CHILDREN WITH SPECIAL NEEDS.....	88

AUTISM CAMPS.....	88
CAMP CHAI.....	89
CAMP CHEERFUL OVERNIGHT CAMP	89
CAMP ECHOING HILLS.....	90
CAMP KODIAK.....	91
CAMP NUHOP SUMMER CAMP	92
CAMP PARADISE.....	92
CAMP QUALITY OHIO	93
CAMP WEKANDU ARTHRITIS SUMMER RESIDENT CAMP.....	93
CLUB KODIAK.....	94
HIGHBROOK LODGE RESIDENT CAMP	95
MUSCULAR DYSTROPHY ASSOCIATION SUMMER CAMP	95
OYO CAMP, OHIO'S CAMP FOR DEAF AND HARD OF HEARING KIDS	96
RECREATION UNLIMITED CAMPS, SUMMER RESIDENTIAL CAMPS.....	97
SUMMER YOUTH WORK EXPERIENCE.....	98
TEMPLED HILLS CAMP – HAND IN HAND.....	99
SOCIAL AND RECREATIONAL PROGRAMS	101
ACHIEVEMENT CENTERS FOR CHILDREN ADAPTED SPORTS	102
ACHILLES RUNNING CLUB	102
ADAPTED FITNESS AND YOGA PLUS LLC	103
ADAPTIVE SPORTS AND ARTS.....	103
ADAPTIVE SPORTS PROGRAM OF OHIO	104
ADOLESCENT CAMP.....	105
ALICE COGSWELL CENTER (ACC) SIGN CAMP	105
ASK (Adaptive Sports for Kids with Disabilities)	106
BEYOND OUR BONDARIES	106
BLOOM.....	107
BLOSSOM.....	107
BLOSSOM MUSIC CENTER SUMMER CONCERTS	108
BRIGHT TRANSITIONS SUMMER EXPERIENCE	108
CAMP CHEERFUL THERAPEUTIC HORSEMANSHIP PROGRAM	109
CLEVELAND MIGHTY BARONS SLED HOCKEY	109
COMMUNITY ENGAGEMENT/EXTENDED COMMUNITY ENGAGEMENT.....	110
FIELDSTONE FARM THERAPEUTIC RIDING CENTER.....	110
FIT FRIENDS.....	111
FIT (FRIENDSHIP IN TEAMS) CAMP	112

HEAD START FEDERALLY FUNDED PRESCHOOL.....	113
LANGUAGE ROOTS.....	113
MAYFIELD ADAPTED RECREATION PROGRAMS.....	114
MOTHER 2 MOTHER SUPPORT GROUP.....	114
NORTHEAST OHIO CHALLENGER.....	115
QUANTUM LEAP.....	115
RESPIRE SERVICES.....	116
SOAP BOX DERBY RACING SPECIAL NEEDS.....	116
SOAR! (SPORTS OPPORTUNITIES & ACTIVE RECREATION).....	117
SOCIAL SKILLS CAMP: SOCIAL EXPLORERS.....	117
SOCIAL SKILLS CAMP: SUPERHEROES.....	118
SOCIAL SKILLS GROUP.....	118
SOCIAL SKILLS GROUP: THE CREW.....	119
OLON BLUE RIBBON ADAPTED RECREATION PROGRAM.....	119
SPECIAL NEEDS SENSORY JUMP.....	120
SPROUT.....	120
S.T.A.R. CAMP - STUDENTS TOGETHER ACHIEVING RESPECT.....	121
SWIM SAFETY.....	121
THE KIDNECTIONS GROUP KITCHEN CONNECTIONS AND DIY CLASSES.....	122
THE UP SIDE OF DOWNS OF NORTHEAST OHIO.....	122
THRIVE.....	123
THRIVE SUMMER CAMP.....	123
TRINITY SPECIAL OLYMPICS Ice Skating Lessons.....	124
TRINITY SPECIAL OLYMPICS Training Program.....	124
VALLEY RIDING THERAPEUTIC RIDING PROGRAM.....	125
YOUTH CHALLENGE.....	125
YOUTH EMPOWERMENT & LEADERSHIP PROGRAM (YELP).....	126
GENERAL INFORMATION.....	127
ADULT DAY SUPPORT / VOCATIONAL TRAINING.....	128
AUTISM, ADHD, LEARNING DIFFERENCES ASSESSMENT.....	128
AUTISM RESOURCES.....	129
EARLY INTERVENTION.....	129
CAMP CHRISTOPHER.....	130
CLEVELAND CHILDREN'S MUSEUM.....	130
CLEVELAND HEARING AND SPEECH CENTER.....	131
CLEVELAND MUSEUM OF ART.....	131

CLEVELAND MUSEUM OF NATURAL HISTORY	131
COACHING AND CONSULTATIONS	132
COMMUNITY EMPLOYMENT/TWO FOUNDATION	132
CONNECTING FOR KIDS.....	133
COUNCIL FOR ECONOMIC OPPORTUNITIES IN GREATER CLEVELAND (CEOGC) Community Service.....	133
CUYAHOGA COUNTY BOARD OF DEVELOPMENTAL DISABILITIES: Family Supports program	134
CUYAHOGA COUNTY BOARD OF HEALTH: CHILDREN WITH MEDICAL HANDICAPS PROGRAM.....	134
cuyahog county public library, ADAPTED Library PROGRAMS.....	135
EMPOWERING EPILEPSY	135
EPILEPSY EDUCATION/KIDS AND FAMILY PROGRAM	136
HATTIE LARLHAM CONSTANT COMPANIONS.....	136
HATTIE'S DOGGIE DAY CARE & BOARDING	137
KIDS AND FAMILY (EPILEPSY ASSOCIATION).....	137
KIDSFIRST AUTISM RESEARCH REGISTRY	138
LEAFBRIDGE, A CENTER OF EXCELLENCE FOR CHILDREN OF UCP OF GREATER CLEVELAND.....	138
LIVESPECIAL.COM.....	139
MILESTONES AUTISM RESOURCES Individual and family consultations	139
MILESTONES NATIONAL AUTISM CONFERENCE	140
MILESTONES FREE AUTISM HELPDESK.....	140
NAMI GC.....	141
NEW YORK LIFE/Morgan Financial Solutions	141
OCALI (OHIO CENTER FOR AUTISM AND LOW INCIDENCE)	141
OHIO COALITION FOR THE EDUCATION OF CHILDREN WITH DISABILITIES (OCECD)	142
OHIO FAMILY TO FAMILY Health information center	143
PATTERNS BEHAVIORAL SERVICES Summer camp.....	144
PLAYHOUSE SQUARE-SENSORY FRIENDLY Programming.....	144
PRENTKE ROMICH COMPANY.....	145
PUBLIC HEALTH NUTRITION SERVICES	145
RED TREEHOUSE.....	146
REPLAY FOR KIDS	147
RIVER ROCK ADULT DAY PROGRAM.....	147
SKYLIGHT FINANCIAL GROUP	148
SPECIAL OLYMPICS, INC.....	148
SUMMER SCHOLARSHIPS FOR RECREATIONAL SERVICES	149
SUPERMOMS ASSOCIATION, INC.	149
TALK PLAY GROW.....	150

THE ARC OF GREATER CLEVELAND ADULT & SCHOOL AGE ADVOCACY 151
THE CENTERS FOR FAMILIES AND CHILDREN 151
UNIVERSITY HOSPITALS Cleveland MEDICAL CENTER DISCOVERY & WELLNESS CENTER FOR CHILDREN 152
TRAVEL TIPS FOR THE DISABLED 152
PARENT MENTORS (Cuyahoga County)..... 153

EXCEPTIONALITIES DEFINITIONS AND CODES

Included in each program descriptor there is a Population Served Code. The following will assist you in defining what special needs population is being served. These definitions have been taken directly from Ohio Department of Education's 2014 Operating Standards for Ohio's Educational Agencies Serving Children with Disabilities

EXCEPTIONALITY DEFINITIONS AND CODES

AUT	AUTISM – means a developmental disability significantly affecting verbal and nonverbal communication and social interaction, generally evident before age 3, which adversely affects a child's educational performance.
ED	EMOTIONAL DISTURBANCE – means a condition exhibiting one or more of the following characteristics over a long period of time and to a marked degree that adversely affects a child's educational performance. <ul style="list-style-type: none"> • An inability to learn that cannot be explained by intellectual, sensory, or health factors; • An inability to build or maintain satisfactory interpersonal relationships with peers and teachers; • Inappropriate types of behavior or feelings under normal circumstances; • A general pervasive mood of unhappiness or depression; and • A tendency to develop physical symptoms or fears associated with personal or school problems. The term includes schizophrenia. It does not apply to children who are socially maladjusted, unless it is determined that they have an emotional disturbance.
HI	HEARING IMPAIRMENT – means an impairment in hearing, whether permanent or fluctuating, that adversely affects a child's educational performance but that is not included under the definition of deafness. Deafness - means a hearing impairment that is so severe that the child is impaired in processing linguistic information through hearing, with or without amplification, and that adversely affects a child's educational performance.
ID	INTELLECTUAL DISABILITY - means significantly sub average general intellectual functioning, existing concurrently with deficits in adaptive behavior and manifested during the developmental period that adversely affects a child's educational performance.
OI	ORTHOPEDIC IMPAIRMENT – means a severe orthopedic impairment that adversely affects a child's educational performance. The term includes impairments caused by congenital anomaly (e.g., clubfoot, absence of some member, etc.), impairments caused by disease (e.g., poliomyelitis, bone tuberculosis, etc.), and impairments from other causes (e.g. cerebral palsy, amputations, and fractures or burns that cause contractures).
OHI	OTHER HEALTH IMPAIRMENT – means having limited strength, vitality or alertness, including a heightened alertness to environmental stimuli, that results in limited alertness with respect to the educational environment, that is due to chronic or acute health problems such as asthma, attention deficit disorder or attention deficit hyperactivity disorder, diabetes, epilepsy, a heart condition, hemophilia, lead poisoning, leukemia, nephritis, rheumatic fever, and sickle cell anemia, and adversely affects a child's educational performance.
SLD	SPECIFIC LEARNING DISABILITY – means a disorder in one or more of the basic psychological processes involved in understanding or in using language, spoken or written, that may manifest itself in an imperfect ability to listen, think, speak, read, write, spell, or to do mathematical calculations, including conditions such as perceptual disabilities, brain injury, minimal brain dysfunction, dyslexia, and developmental aphasia. The term does not include learning problems that are primarily the result of visual, hearing, or motor disabilities; of mental retardation; of emotional disturbance; or of environmental, cultural, or economic disadvantage.
S/LI	SPEECH OR LANGUAGE IMPAIRMENT – means a communication disorder, such as stuttering, impaired articulation, language impairment, or voice impairment that adversely affects a child's educational performance.

EXCEPTIONALITY DEFINITIONS AND CODES

TBI	<p>TRAUMATIC BRAIN INJURY – means an acquired injury to the brain caused by an external physical force, or by other medical conditions, including but not limited to stroke, anoxia, infectious disease, aneurysm, brain tumors and neurological insults resulting from medical or surgical treatments. The injury results in total or partial functional disability or psychosocial impairment or both, that adversely affects a child’s educational performance. The term applies to open or closed head injuries, as well as to other medical conditions that result in acquired brain injuries. The injuries result in impairments in one or more areas such as cognition; language; memory; attention; reasoning; abstract thinking; judgment; problem-solving; sensory, perceptual, and motor abilities; psychosocial behavior; physical functions; information processing; and speech. The term does not apply to brain injuries that are congenital or degenerative, or to brain injuries induced by birth trauma.</p>
VI	<p>VISUAL IMPAIRMENT INCLUDING BLINDNESS – means an impairment in vision, that even with correction, adversely affects a child’s educational performance. The term includes both partial sight and blindness.</p>
<p>TWICE-EXCEPTIONAL DEFINITION AND CODE</p>	
GT	<p>GIFTED- means students identified as having a disability (listed above except ID) that has also been identified as meeting the minimum threshold on all three parts of indicators: performance, progress and input.</p>

GUIDE TO PROGRAMS AND POPULATIONS SERVED

Program Coding

ACA – Academic
ART – Arts & Therapeutic
DAY – Day Camps
RES – Residential Camps
SOC – Social & Recreational

Type	Program	AUT	ED	GT	HI	ID	MD	OI	OHI	SLD	S/LI	TBI	VI
ACA	ABA Outreach Services	•	•						•				
ACA	ABA Provider	•											
ACA	Camp LUCKY	•				•	•	•	•	•	•	•	
ACA	C.A.V.S.	•				•	•			•	•		
ACA	Cover to Cover	•	•		•		•	•		•	•	•	•
ACA	Early Learning	•	•		•	•	•	•	•	•		•	•
ACA	Extended School Year	•					•						
ACA	Handwriting Groups									•			
ACA	Job Readiness	•	•		•	•		•			•	•	
	Kindergarten Readiness	•	•		•	•	•	•	•	•	•	•	•
ACA	Koinonia Enterprises	•			•	•	•					•	•
ACA	Little Learners Social Group	•	•	•					•	•	•		
ACA	North Coast Tutoring	•	•				•		•	•	•	•	
ACA	Post-Secondary Career Exploration Program	•	•				•			•			
ACA	Post-Secondary College Program for Students with Disabilities	•	•				•			•			
ACA	Summer at Chagrin – Townsend									•			
ACA	Summer Youth Work Experience	•			•	•	•	•	•	•	•	•	•
ACA	The D.A.M. Program									•			
ACA	The Silver Lining Group	•	•			•	•			•			
ACA	The Whole Kid (Private Tutoring)								•	•			
ACA	Townsend Learning Center									•			•
ART	Abilities First Fine Motor Fun Camp	•	•		•		•		•		•	•	•
ART	Abilities First Write 4 U Camps	•	•		•		•		•		•	•	•
ART	Abilities First Write-On into Kindergarten	•	•		•	•	•		•	•	•	•	•
ART	Adapted Dance Program	•	•		•	•	•	•	•	•	•	•	•
ART	Adapted Music Lessons (Beyond Words)	•	•		•	•	•	•	•	•	•	•	•

Type	Program	AUT	ED	GT	HI	ID	MD	OI	OHI	SLD	S/LI	TBI	VI
ART	Adapted Music Lessons (Music Therapy Enrichment Center)	•	•		•	•	•	•	•	•	•	•	•
ART	Aquatic Therapy	•	•		•		•	•	•	•	•	•	•
ART	Art-tism	•											
ART	Art Therapy Studio	•	•			•	•	•	•	•		•	
ART	Baldwin Wallace Speech Clinic	•	•	•	•	•	•	•	•	•	•	•	•
ART	Camp A.B.C	•	•			•	•	•	•	•	•	•	
ART	Camp Leafbridge	•			•	•	•	•	•		•	•	•
ART	Camp Suntastic	•	•			•			•	•	•	•	
ART	Camp Wonder	•	•			•			•	•	•		
ART	Catalyst Farm Summer Camp	•				•	•			•	•	•	
ART	Center for Music Therapy	•	•		•	•	•	•	•	•	•	•	•
ART	Connect and Move	•	•		•	•	•	•	•	•	•	•	•
ART	Connect and Play	•	•		•	•	•	•	•	•	•	•	•
ART	Counseling at Catalyst Farm		•										
ART	Creative Arts Therapies	•	•			•	•	•	•	•	•	•	•
ART	D.E.A.F.	•			•					•			
ART	Encouraging Connections	•			•				•				
ART	Equine Assisted Learning	•	•										
ART	Feeding Foundations	•							•				
ART	Flight	•	•		•	•	•		•	•	•	•	
ART	Flourish	•							•	•	•		
ART	Hearing Impaired: Auditory, S/L Therapy				•								
ART	Inspire	•	•		•	•	•		•	•	•	•	
ART	Lakeshore Speech Therapy, LLC	•				•	•				•	•	
ART	Music & Dance Summer Camp (Beyond Words)	•	•		•	•	•	•	•	•	•	•	•
ART	Music Therapy Beyond Words	•	•		•	•	•	•	•	•	•	•	•
ART	Music Therapy Enrichment Center	•	•		•	•	•	•	•	•	•	•	•
ART	OT, PT and SLP @ Catalyst Farm	•					•	•	•	•	•	•	
ART	Pediatric Neuropsychology Center	•	•	•	•	•	•	•	•	•	•	•	•
ART	Pony Tales Farm	•	•		•	•	•		•	•	•		•
ART	Psychological Service	•	•		•				•	•	•	•	•
ART	Razorsharks Swim Team	•	•		•	•	•	•	•	•	•	•	•
ART	Reaching New Heights	•	•		•	•	•	•	•	•	•	•	•
ART	Recreational Respite Program (DD)	•							•	•	•		
ART	Royalton Music Center	•	•	•	•	•	•	•	•	•	•	•	•

Type	Program	AUT	ED	GT	HI	ID	MD	OI	OHI	SLD	S/LI	TBI	VI
ART	Small Groups at Catalyst Farms	•				•	•	•		•	•	•	
ART	S.M.I.L.E Summer Camp	•	•			•	•	•	•	•	•	•	•
ART	Social Skills/Behavioral Groups	•	•			•				•			
ART	Speech and Language Therapy	•	•			•	•			•	•		
ART	Speech Therapy (individual)	•	•		•	•	•		•	•	•	•	
ART	Summer Session Skills/Behavioral Groups	•	•			•				•			
ART	Summer Social Thinking	•	•						•	•	•		
ART	The Learning Groove	•	•		•	•	•	•	•	•	•	•	•
ART	The M.I.L.E. Management for Independent Living Enrichment	•				•				•	•	•	
ART	The School of Dancing Wheels	•	•		•	•	•	•	•	•	•	•	•
ART	Therapeutic Riding	•	•		•	•	•	•	•	•	•	•	•
ART	Thrive Camp	•				•	•	•	•	•	•	•	
ART	Western Reserve Speech & Language Partners (W.R.S.L.P.)	•								•	•		
ART	Zen and the Arts Camp	•	•		•	•	•	•	•	•	•	•	•
DAY	ABCs Day Camp												•
DAY	Adaptive Sports Program of Ohio							•					•
DAY	Akron Rotary Camp	•	•		•	•	•	•	•	•	•	•	•
DAY	ASD Family Camp	•											
DAY	Believers Academy Summer Camp	•	•			•	•			•			
DAY	Beyond Camp	•											
DAY	Bright Futures Summer Day Camp						•						•
DAY	Camp Insight	•			•	•		•	•	•	•	•	•
DAY	Camp Paradise	•	•		•	•	•	•	•	•	•	•	•
DAY	Camp SBC	•	•			•	•				•		
DAY	Career Exploration												•
DAY	Catholic Charities Camp Happiness	•				•	•						
DAY	Cheerful Day Camp	•			•	•	•	•	•		•	•	
DAY	Circle of Friendship	•	•			•	•						
DAY	Express for Success	•				•		•		•	•		
DAY	HELP Foundation Summer Program	•			•	•	•	•	•	•	•	•	•
DAY	In-N-Out of the City Summer Camp	•	•			•	•		•	•			
DAY	Joni and Friends	•	•		•	•	•	•	•	•	•	•	•
DAY	Krazy Kamp				•				•			•	•
DAY	Lake Shore Day Camp	•			•	•	•	•	•	•	•		

Type	Program	AUT	ED	GT	HI	ID	MD	OI	OHI	SLD	S/LI	TBI	VI
DAY	Life Steps	•	•		•	•	•	•	•	•	•	•	•
DAY	Middleburg Early Education Center Summer Speech Camp	•			•	•	•		•	•	•	•	
DAY	New Avenues Summer Camp	•	•	•	•	•	•	•	•	•	•	•	•
DAY	Performing Arts Camp	•	•		•	•	•	•	•	•	•	•	•
DAY	Sensational Day Program	•											
DAY	Summer Treatment Program								•				
RES	Akron Rotary Camp	•	•		•	•	•	•	•	•	•	•	•
RES	Autism Camps	•											
RES	Camp Chai	•			•	•				•	•		
RES	Camp Cheerful Overnight Camp	•			•	•	•	•	•		•	•	•
RES	Camp Echoing Hills	•	•		•	•	•	•	•	•	•	•	•
RES	Camp Kodiak / Club Kodiak	•								•			
RES	Camp Nuhop	•	•			•	•				•		
RES	Camp Paradise	•	•		•	•	•	•	•	•	•	•	•
RES	Camp Quality Ohio	Call for information											
RES	Camp Wekandu Arthritis Summer Resident Camp								•				
RES	Highbrook Lodge						•						•
RES	Muscular Dystrophy Assoc. Summer Camp								•				
RES	OYO Camp				•								
RES	Recreation Unlimited Camps	•			•	•	•	•	•		•	•	•
RES	Summer Youth Work Experience												•
RES	Templed Hills Camp					•							
SOC	Achievement Centers for Children Adapted Sports	•			•	•		•			•		•
SOC	Achilles Running Club	•	•		•	•	•	•	•	•	•	•	•
SOC	Adapted Fitness and Yoga Plus LLC	•	•		•	•	•	•	•	•	•	•	•
SOC	Adaptive Sports and Art				•		•	•			•	•	•
SOC	Adaptive Sports Program of Ohio							•					•
SOC	Adolescent Camp	•	•			•	•				•		
SOC	Alice Cogswell Center Sign Camp				•								
SOC	ASK (Adaptive Sports for Kids with Disabilities)	•	•	•	•	•	•	•	•	•	•	•	•
SOC	Beyond Our Boundaries	•			•	•	•	•	•	•	•	•	•
SOC	Bloom	•			•	•	•	•	•	•	•	•	
SOC	Blossom	•			•	•	•		•	•	•	•	
SOC	Blossom Music Center Summer Concerts	•	•	•	•	•	•	•	•	•	•	•	•
SOC	Bright Transitions Summer Experience	•	•			•				•	•		

Type	Program	AUT	ED	GT	HI	ID	MD	OI	OHI	SLD	S/LI	TBI	VI
SOC	Camp Cheerful Therapeutic Horsemanship Program	•			•	•		•			•	•	
SOC	Cleveland Mighty Barons Sled Hockey							•					
SOC	Community Engagement	•				•	•		•	•	•		
SOC	Fieldstone Farm Therapeutic Riding Ctr.	•	•		•	•	•	•	•	•	•	•	•
SOC	Fit Friends	•	•		•	•	•	•	•	•	•	•	•
SOC	FIT (Friendship in Teams)	•								•	•		
SOC	Head Start Preschool	•	•		•	•	•	•	•	•	•	•	•
SOC	Language Roots	•			•	•	•		•	•	•	•	
SOC	Mayfield Adapted Recreation	•	•	•	•	•	•	•	•	•	•	•	•
SOC	Mother 2 Mother	•	•		•	•	•		•	•	•	•	•
SOC	Northeast Ohio Challenger Baseball Little League Inc.	•	•		•	•	•	•	•	•	•	•	•
SOC	Quantum Leap	•	•		•	•	•	•	•	•	•	•	•
SOC	Respite Services	•	•			•	•			•			
SOC	Soap Box Derby Racing Special Needs	•	•	•	•	•	•	•	•	•	•	•	•
SOC	SOAR! Sports Opportunities & Active Recreation	•	•	•	•	•	•	•	•	•	•	•	•
SOC	Social Skills Camp: Social Explorers	•								•	•		
SOC	Social Skills Camp: Superheroes	•								•	•		
SOC	Social Skills Group	•	•		•	•	•	•	•	•	•	•	•
SOC	Social Skills Group: The Crew	•								•	•		
SOC	Solon Blue Ribbon	•	•		•		•	•		•	•		
SOC	Special Needs Sensory Jump	•			•	•			•	•	•		
SOC	Sprout	•			•	•	•		•	•	•	•	
SOC	S.T.A.R.	•			•	•	•	•	•	•	•	•	•
SOC	Swim Safety	•	•		•	•	•	•	•	•	•	•	•
SOC	The Kidnections Group Kitchen	•			•	•	•		•	•	•		
SOC	The Up Side of Downs					•	•						
SOC	Thrive	•			•	•	•		•	•	•	•	
SOC	Thrive Summer Camp	•				•	•		•	•	•	•	
SOC	Trinity Special Olympics Ice Skating	•	•		•	•	•	•	•				•
SOC	Trinity Special Olympics Training Program	•	•		•	•	•		•				•
SOC	Valley Riding Therapeutic Riding Program	•			•	•	•	•	•	•	•	•	
SOC	Youth Challenge				•			•				•	•
SOC	Youth Empowerment & Leadership Program				•			•				•	•

ACADEMIC PROGRAMS



ABA OUTREACH SERVICES 1:1 THERAPY

Population Served: AUT, ED, OHI

Dates: Rolling admissions year-round

Ages: 2-22

Fee: Contact us for more information

Organization: ABA Outreach Services

Contact: Michelle Baskin

Address: Mailing Address: ABA Outreach Services 484 Woodbine Circle; Mayfield Village, OH 44131
Social Skills Group Address: 6537 Brecksville Rd.; Independence, OH 44131

Phone: 216-503-1234 **Fax:** 216-503-1233

Email: mbaskin@aba-therapy.com

Website: <https://www.aba-therapy.com>

Descriptor: Our Mission: To use Applied Behavioral Analysis in a fun and natural way to transform the lives of kids with behavioral, social, and communication issues.

Our Core Values:

- Teach with love
- Never stop learning
- Create fun!
- Meet people where they are

Our Services:

- Behavior Therapy
- Social Groups
- ABA Training and Consulting in Schools

Funding Accepted Through:

- Autism Scholarship
- Bright Beginnings
- NEON
- Family Resource Funds
- Private Grants
- Health Insurance (policies which accept ABA)

ABA PROVIDER

Population Served: AUT

Dates: Taking clients now, no wait

Ages: 18 months- 22 years old

Fee: We take all major commercial insurances and autism scholarship

Organization: Autism Learning Partners

Contact: Jacquie Rymer

Address: 7055 Engle RD Suite 604/605; Middleburg Heights, OH 44130

Phone: 440-413-5146

Email: jrymer@autismlearningpartners.com

Website: www.autismlearningpartners.com

Descriptor: We are an ABA provider who provides clinic based and in-home services for individuals with autism. We can work on behavioral challenges, feeding, toilet training, social skills, and functional communication.

CAMP L.U.C.K.Y. – LANGUAGE UNLOCKS COMMUNICATION FOR KIDS – YES!

Population Served: AUT, MD, OHI, TBI, ID, SLD, OI, S/LI

Dates: July-August, 2020

Ages: Developmental ages 2-5

Fee: Call for information

Organization: Accurate Speech, Inc.

Contact: Judy Ptaszek, M.S.-CCC/SLP

Address: 20800 Westgate Mall; Suite 510; Fairview Park, OH 44126

Phone: 440-895-1309 **Fax:** 855-326-1362

Email: accuratespeech@gmail.com

Website: www accuratespeechtherapy.com

Descriptor: Camp L.U.C.K.Y. (Language Unlocks Communication for Kids. Yes!) is our very popular summer camp for children who demonstrate delays in the area of social skills, language and speech. Camp L.U.C.K.Y. is offered to all children between the developmental ages of 2 to 5 years of age who need to improve their social skills and/or speech/language development. Our campers may need to improve: eye-contact, sharing, turn-taking, staying on topic, maintaining a conversation, empathy, and/or the overall intelligibility of speech. We address IEP (Individualized Education Plan) goals if needed. We work closely with Ohio school districts to help them meet the needs of their students during the summer and throughout the school year if requested. Camp L.U.C.K.Y is highly specialized to meet the individual needs within a group setting. The maximum number of children per group is six. Each week presents a new and exciting theme that children of all ages truly enjoy but most importantly benefit from! Call Accurate Speech Therapy at (440) 895-1309 for details or to reserve your spot!



C.A.V.S. (COMMUNITY ENGAGEMENT, ACADEMIC FOCUS, VOCATIONAL SKILLS. SOCIAL INTERACTION) LAKELAND SATELLITE PROGRAM

Population Served: AUT, MD, ID, SLD, S/LI

Dates: June 22-July 24, 2020

Ages: 14-22 years

Fee: \$1,675

Organization: New Avenues to Independence

Contact: Cheryl General

Address: 8090 Broadmoor Rd., Mentor, Ohio 44060

Phone: 216-701-4577 **Fax:** 440-602-1003

Email: cgeneral@newavenues.net

Website: www.newavenues.net

Descriptor: C.A.V.S. Lakeland Satellite program is held at Lakeland Community College in the mornings and Broadmoor School in the afternoons. Students and staff are transported by bus to Broadmoor School after lunch each day during the program. Components of the program include: Community Engagement, Academic Goals, Vocational Skills, & Social Interaction. Students with special needs ages 14-22 who have the goals listed above are encouraged to attend. Activities during the program include: Community Outings, Computer Lab, Academic Goal Work, Vocational Activities, Adaptive Physical Education, Swimming, Cooking, & Socialization Skills. This program qualifies as Extended School Year.

COVER TO COVER

Population Served: AUT, ED, MD, HI, OHI, TBI, ID, SLD, VI, S/LI

Dates: Ongoing

Ages: 10-17 years

Fee: \$50 per 90 minute session

Organization: Reaching New Heights, LLC

Contact: Donna Culley, M.A. CCC/SLP

Address: 3505 East Royalton Road; Suite 221; Broadview Heights, OH 44147

Phone: 440-241-8366 **Fax:** 440-736-7600

Email: dculley@reachingnewhts.com

Website: www.reachingnewhts.com

Descriptor: This unique group focuses on reading and social skills in a "Book Club" format. This group is facilitate by a certified Language Arts Teacher who is also an RBT and is pursuing her Master's in Special Education. The students will engage in conversation and skilled activities while also improving their literacy and their love of books.

EARLY LEARNING

Population Served: AUT, ED, MD, HI, OHI, ID, SLD, VI, S/LI, TBI

Dates: Year round enrollment opportunities

Ages: 6 weeks – 5 years old

Fee: Free- \$200

Organization: The Centers for Families and Children

Contact: Nicole Diaz

Address: 4500 Euclid Avenue; Cleveland, OH 44103

Phone: 216-325-9224

Email: nicole.diaz@thecentersohio.org

Website: www.thecentersohio.org

Descriptor: A child's experiences during the first 2,000 days of their life—from birth to the start of kindergarten—have a lasting impact on later success. With seven five-star rated early learning centers in Northeast Ohio, plus a home-based program, we help families capitalize on this precious time.

EXTENDED SCHOOL (ESY) PROGRAM

Population Served: AUT, MD

Dates: June 22 – July 31, 2020

Ages: Grades K-10

Fee: Contact for more information

Organization: Achievement Centers for Children

Contact: Lisa Cooper

Address: 4255 Northfield Road, Highland Hills, Ohio 44128

Phone: 216-292-9700 **Fax:** 216-292-9721

Email: lisa.cooper@achievementctrs.org

Website: campcheerful.achievementcenters.org

Descriptor: An extended school year (ESY) service option for children in grades K-10 with autism spectrum disorder (ASD) or other developmental disabilities requiring intensive, targeted, specially designed instruction over the summer to prevent skill regression and increase skill retention. Participants will enjoy a four week summer program that includes themed weeks, embedded academic learning strands and individualized work on IEP goals. Each participant will also receive support services from an occupational therapist and speech therapist. Activities include thematic units, swimming, crafts, outdoor play, academic instruction in core subject areas, adaptive behavior skill building, social skills training, sensory experiences and more! The sessions will be filling on a first-come, first-served basis.

HANDWRITING GROUPS

Population Served: SLD

Dates: Call for information

Ages: 7-18, divided into groups based on age/grade/ability

Fee: Call for information

Organization: Reaching New Heights, LLC

Contact: Donna Culley, M.A. CCC/SLP

Address: 3505 East Royalton Road; Suite 221; Broadview Heights, OH 44147

Phone: 440-241-8366 **Fax:** 440-736-7600

Email: dculley@reachingnewhts.com

Website: www.reachingnewhts.com

Descriptor: Our handwriting groups are facilitated by licensed Occupational Therapists. The ratio of staff to students is 5:1 and the 60 minute sessions focus on strategies to help with handwriting deficits caused by dyslexia, TBI, or other diagnosis.

JOB READINESS

Population Served: AUT, ED, HI, TBI, ID, OI, S/LI, Down syndrome

Dates: June, July, August 2020

Ages: 16 and up

Fee: Call for information

Organization: Two Foundation Inc.

Contact: Shari Hunter

Address: 8410 E. Washington St., Chagrin Falls, Ohio 44023

Phone: 440-384-3236

Email: Shari@twofoundation.com

Website: Twofoundation.com

Descriptor: On the job experience at our cafe and with our business partners, job skill training. A fully integrated program.

KINDERGARTEN READINESS

Population Served: AUT, ED, MD, HI, OHI, TBI, ID, SLD, VI, OI, S/LI

Dates: Call for information

Ages: 5-6, children entering kindergarten in the fall

Fee: Call for information

Organization: Reaching New Heights, LLC

Contact: Donna Culley, M.A. CCC/SLP

Address: 3505 East Royalton Road; Suite 221; Broadview Heights, OH 44147

Phone: 440-241-8366 **Fax:** 440-736-7600

Email: dculley@reachingnewhts.com

Website: www.reachingnewhts.com

Descriptor: Our social skills groups are run by licensed professionals including Board Certified Behavioral Analysts (BCBA), Speech Language Pathologists, or Occupational Therapists. The ratio of staff to students is 3:1 and the 90 minute sessions include a snack, a craft, and group participation. In addition, the kindergarten readiness program will focus on kindergarten academic skills.

KOINONIA ENTERPRISES

Population Served: AUT, MD, HI, TBI, ID, VI

Dates: Our Day Program and Vocational Programs are ongoing and can be attended throughout the year.

Ages: We serve ages 18 and up.

Fee: Fees are paid through waivers, county board funding or private pay.

Organization: Koinonia Enterprises

Contact: Social Services Manager: Amber Giangrande, 216-588-8777 ext. 134 or 216-315-3006

Manager of Workforce Development: Jason Weppelman, 216-926-4589

Program Manager: John Germaine, 216-835-9135

Community Resource Manager: 216-392-4556

Address: Main Office: 6161 Oak Tree Blvd., Independence, OH 44131

Career and Senior Services Center: 1200 Resource Drive, Brooklyn Heights, OH 44131

Mayfield Career Center: 701 Beta Drive, Mayfield Village, OH 441245

Phone: 216-588-8777 Fax: 216-588-5670

Email: amber.giangrande@koinoniahomes.org

Website: <https://koinoniahomes.org>

Descriptor: Koinonia serves over 200 individuals vocationally. We differ from other agencies by striving to create a plan that is individualized specifically around each person on their personal path to employment rather than just placing people in jobs. We work as a team to get to know each person, meeting them wherever they are on their path, and encouraging them to improve to their highest potential. We offer community integration opportunities beyond our program walls in such areas as: structured volunteer opportunities, paid internships, career exploration, field trips, and an array of other options planned to accommodate the needs of each individual served by Koinonia.





LITTLE LEARNERS SOCIAL GROUP (SOLUTIONS BEHAVIORAL CONSULTING)

Population Served: AUT, ED, OHI, SLD, S/LI

Dates: Call for information

Ages: 3-6 years old

Fee: Call for information

Organization: Solutions Behavioral Consulting

Contact: Ashley Madonio

Address: 8536 Crow Drive; Suite 240; Macedonia, OH 44056

Phone: 330-888-9596

Email: amadonio@solutionsbehavioral.com

Website: www.solutionsbehavioral.com

Descriptor: SBC is offering a social group for children with autism spectrum disorder or related disabilities. Sessions take place at Solutions Behavioral Consulting in Macedonia. Each child is provided 1:1 assistance to facilitate interactions with same aged peers. Sessions will include instruction in social language, pre-academics, adaptive skills, and play skills. This group is also enrolling peer models.

Activities will include:

- Circle time
- Arts and crafts
- Group games
- Group lessons
- Gross motor activities



NORTH COAST TUTORING SERVICES IN-HOME TUTORING

Population Served: AUT, ED, MD, OHI, TBI, ID, SLD, Dyslexia, Dyscalculia

Dates: Year round -scheduled at convenient times with the family. (Tutoring available seven days a week throughout seven northeast Ohio counties.

Ages: 5 to 22 years, also adults. Three years and up for the Autism Scholarship Program.

Fee: \$50/hr. (one-on-one). As an Autism and Jon Peterson provider, we can bill these scholarships for qualifying students.

Organization: North Coast Tutoring Services “The Education Problem Solvers”

Contact: Carole Richards, Executive Director; Kimberly Page, Director of Student Services; Sweythar Ravishankar, Autism and Jon Peterson Scholarship Program Administrator

Address: 31300 Solon Rd., Suite 1 Solon, OH 44139.

Phone: 440-914-0200 or 1-800-835-7984 Fax: 440-542-1504

Email: info@northcoasted.com; kimp@northcoasted.com; Sweythar@northcoasted.com

Website: www.northcoasted.com

Descriptor: Our specialty, helping students when they get stuck in a subject or course. We have 300 skilled tutors for all subjects and grades. Our trained tutors teach Richards Learning Systems, based on Orton Gillingham (phonics, comprehension, writing skills), and Real Life Math (calculation skills, math concepts with manipulatives, word problems.

When students fall behind, schools and parents sometimes find themselves in bitter meetings pointing fingers and blaming one another. Our goal: turn these challenges into academic success. We provide customized learning plans for each student with a tutor in your home or a nearby public location.

Why bring North Coast Tutoring into the picture? Because we can provide answers, solutions. We serve seven northeast Ohio counties. We are approved providers to the Autism and Jon Peterson Scholarships. We also have many private clients.

POST-SECONDARY CAREER EXPLORATION PROGRAM

Population Served: AUT, ED, MD, SLD

Dates: June 22, 2020 -August 3, 2020

Ages: 18-30 years.

Fee: Varies, paid internship used towards summer program

Organization: Medina Creative Transitions

Contact: Nancy Brewer, Academic Director

Address: 232 North Court; Medina, OH 44256

Phone: 330-388-5880

Email: nbrewer2373@gmail.com

Website: www.medinacreativehousing.com

Descriptor: The summer Career Exploration program involves job site opportunities Monday through Thursdays with classroom instruction on career skills on Friday. Job coaching and supervision are done throughout the week.

POST-SECONDARY COLLEGE PROGRAM FOR STUDENTS WITH DISABILITIES

Population Served: AUT, ED, MD, SLD

Dates: August, 2020 -May, 2021

Ages: 18-30 years.

Fee: Course and classes determine the fee charged

Organization: Medina Creative Transitions

Contact: Nancy Brewer, Academic Directory

Address: 232 North Court; Medina, OH 44256

Phone: 330-388-5880

Email: nbrewer2373@gmail.com

Website: www.medinacreativehousing.com

Descriptor: Medina Creative Transitions is a post-secondary college program for students with disabilities. We offer Adult day programs, college day programs and organization skill development. We have lessons in executive functions, life skills, communication skills, career skills and social thinking.in an afternoon program that works on a goal of independent living and a successful college experience.

SUMMER AT CHAGRIN - TOWNSEND

Population Served: SLD

Dates: Call for information

Ages: K – 12th grade

Fee: Call for information

Organization: Chagrin Townsend Learning Center

Contact: Tony Whitehouse

Address: 86 North Main St., #201; Chagrin Falls, OH 44022

Phone: 440-247-8300

Email: jeff@chagrintownsend.com

Website: <http://www.chagrintownsend.com/>

Descriptor: Call for information. One-on-one tutoring enrichment programs

SUMMER YOUTH WORK EXPERIENCE

Population Served: AUT, MD, HI, OHI, TBI, ID, SLD, VI, OI, S/LI

Dates: Session 1: June to July

Session 2: July to August

Sessions are 5 weeks long and require 20 hours of work/classroom time per week.

Ages: 16-22 years

Fee: Call for Information on signing up for services

Organization: United Cerebral Palsy (UCP) of Greater Cleveland

Contact: Kate Adkins-Dix

Address: 10011 Euclid Avenue, Cleveland, Ohio 44106

Phone: 216-791-8363

Email: kadkins-dix@ucpcleveland.org

Website: www.oakleafpartners.org

Descriptor: The Summer Youth Work Experience helps high school students with disabilities gain work experience at businesses throughout Northeast Ohio. The intention of the program is to teach students vocational skills, appropriate work behaviors, communication, interpersonal skills and skills within other vocational areas as needed according to their individualized service goals.

THE D.A.M. (DIAGNOSE, APPLY, MOTIVATE) PROGRAM

Population Served: SLD

Dates: Ongoing

Ages: 18 years and older

Fee: Sliding Scale, visit our website for further information

Organization: The LD Edge Network

Contact: Holly Roe, Executive Director

Address: 3389 Fulton Road, Room 107, Cleveland, Ohio 44109

Phone: 216-870-1432

Email: ldedge15@gmail.com

Website: www.thededgenetwork.org

Descriptor: Our mission is to provide a streamlined process for assessing under-resourced adults with learning disabilities, and incorporating specialized intervention practices to elevate their educational and career statuses. We also offer training and professional development specific to learning disabilities in adults to the educators that teach them, all with the goal of increasing the employability and quality of life for these adults and their families.

THE SILVER LINING GROUP

Population Served: AUT, ID, MD, SLD, AUT

Dates: Year-round services

Ages: All ages welcome

Fee: Please call to discuss your child's funding options.

Organization: The Silver Lining Group

Contact: Jessica Obregon

Address: 24865 Detroit Road, Westlake, OH 44145

Phone: 440-250-8800 **Fax:** 440-641-1170

Email: info@behavioralinterventioncenters.com

Website: <http://www.behavioralinterventioncenters.com>

Descriptor: Silver Lining Group's summer sessions are an extension of our Center Based Educational/Intervention Services. We provide individuals with autism, Down syndrome, mental health disorders, and developmental disabilities a structured and fun summer environment while working on goals established by the child's IEP/ISP team.

In addition, we do provide Extended School Year services, a program that provides children with disabilities IEP services during the summer months. Extended School Year, like most other special education programs, varies school district to school district. Depending upon your child's needs and abilities (and on your school district), it may be possible to get ESY funding for summer intervention.

THE WHOLE KID (PRIVATE TUTORING)

Population Served: OHI, SLD

Dates: Summer 2020 and beyond

Ages: K – 12 and beyond

Fee: Call for information

Organization: The Whole Kid

Contact: Tim Tibbitts

Address: 18035 Fernway; Shaker Heights, OH 44122

Phone: 216-991-1707

Email: LearnToSucceed@TheWholeKid.com

Website: www.thewholekid.com

Descriptor: The Whole Kid provides excellent, highly individualized tutoring for students K-12 and beyond. Summer enrichment or skill building.

TOWNSEND LEARNING CENTER

Population Served: SLD, V

Dates: Year round

Ages: Preschoolers – adults

Fee: Based on programs scheduled

Organization: Townsend Learning Center

Contact: Sarah Littlefield

Address: 1667 E. 40th Street, Suite 1B; Cleveland, OH 44103 (Several locations Cleveland, OH)

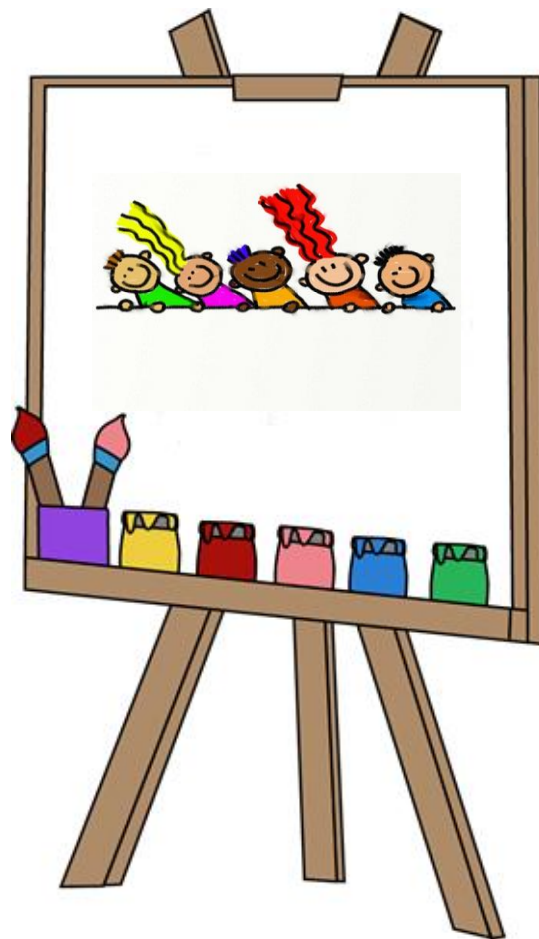
Phone: 216-472-8300

Email: sarah@learnwithus.com

Website: www.learnwithus.com

Descriptor: All classes are diagnostic and individualized. Diagnostic testing is optional. For more information call contact. Program sites: Midtown – Cleveland, 1667 E. 40 (Loftworks) Akron - 2800 S. Arlington.

ART AND THERAPEUTIC PROGRAMS





Art and Therapeutic Programs

ABILITIES FIRST FINE MOTOR FUN CAMP

Population Served: AUT, ED, MD, HI, OHI, TBI, SLD, VI, S/LI

Dates: June 16 - July 28, 2020

Ages: 4 – 6 years

Fee: \$360.00 includes Handwriting Without Tears book and activities for home. An additional \$30 screening is required for all children who are not currently enrolled in OT services at Abilities First, LLC. This will be scheduled before camp begins.

Organization: Abilities First, LLC

Contact: Bridget Coleman

Address: 20800 Westgate Suite 500; Fairview Park, OH 44126

Phone: 440-333-1880 **Fax:** 440-333-1834

Email: bridget.coleman@abilities1st.com

Website: www.abilities1st.com

Descriptor: Whole body movement and sensory motor activities get your child ready for sitting at the table and writing. Fine motor activities address pre-writing strokes, pencil grasp, introduction to uppercase letters, and writing name. Fine Motor games address 2 hand use, hand coordination, turn taking and following directions. Parents learn strategies to use at home with your child.

Fun “homework” activities will be provided after each class and progress is dependent on completion of homework strategies. Groups will have a 4:1 ratio and will be led by an Occupational Therapist/ Occupational Therapy Assistant.





Art and Therapeutic Programs

ABILITIES FIRST WRITE 4 U CAMP

Population Served: AUT, ED, MD, HI, OHI, TBI, SLD, VI, S/LI

Dates: June 19 – July 31, 2020; meets Fridays, 9:30 a.m. - 11:00 a.m.

Ages: Grade 1-3

Fee: \$360.00 includes Handwriting Without Tears book and activities for home. An additional \$30 screening is required for all children who are not currently enrolled in OT services at Abilities First, LLC. This will be scheduled before camp begins.

Organization: Abilities First, LLC

Contact: Bridget Coleman

Address: 20800 Westgate Suite 500, Fairview Park, OH 44126

Phone: 440-333-1880 **Fax:** 440-333-1834

Email: bridget.coleman@abilities1st.com

Website: www.abilities1st.com

Descriptor: Brain Gym, Balavisix and sensory motor activities will emphasize R/L awareness, build core strength and get your child ready for writing. Fine motor activities address pencil grasp, writing words and sentences with correct size, space and line use. Fine Motor games address 2 hand use, hand coordination, attention to task, turn taking, and following directions. Parents learn strategies to use at home with your child. Fun “homework” activities will be provided after each class and progress is dependent on completion of homework strategies.

Groups will have a 4:1 ratio and will be led by an Occupational Therapist/ Occupational Therapy Assistant.

Minimum of 4 students and Maximum of 8 students per class.



Art and Therapeutic Programs

ABILITIES FIRST WRITE-ON INTO KINDERGARTEN

Population Served: AUT, ED, MD, HI, OHI, TBI, ID, SLD, VI, S/LI

Dates: June 18 – July 30, 2020; meets Thursdays, 9:30 a.m. – 11:00 a.m.

Ages: 5 – 7 years old

Fee: \$360.00 includes Handwriting Without Tears book and activities for home. An additional \$30 screening is required for all children who are not currently enrolled in OT services at Abilities First, LLC. This will be scheduled before camp begins.

Organization: Abilities First, LLC

Contact: Bridget Coleman

Address: 20800 Westgate Suite 500; Fairview Park, OH 44126

Phone: 440-333-1880 **Fax:** 440-333-1834

Email: bridget.coleman@abilities1st.com

Website: www.abilities1st.com

Descriptor: Brain Gym, Balavisix and sensory motor activities will emphasize R/L awareness, build core strength and get your child ready for writing. Fine motor activities address pencil grasp, uppercase letters, introduction to lower case and writing name in mixed case. Fine Motor games address 2 hand use, hand coordination, turn taking, attention to task, and following directions. Parents learn strategies to use at home with your child. Fun “homework” activities will be provided after each class and progress is dependent on completion of homework strategies.

Groups will have a 4:1 ratio and will be led by an Occupational Therapist/ Occupational Therapy Assistant.

Minimum of 4 students and Maximum of 8 students per class.

ADAPTED DANCE PROGRAM @ BEYOND WORDS: MUSIC & DANCE CENTER

Population Served: AUT, ED, MD, HI, OHI, TBI, ID, SLD, VI, OI, S/LI

Dates: On-going

Ages: 3-22

Fee: Assessment: \$25.

Call for details regarding tuition for our Levels 1 – 4.

Organization: Beyond Words: Music & Dance Center

Contact: Erin Jester, MT-BC, Director/Owner

Address: 6058 Royalton Road, North Royalton, OH 44133

Phone: 440-230-6100

Email: erin.jester@beyondwordscenter.org

Website: <http://www.beyondwordscenter.org>

Descriptor: The ultimate goal of our adaptive dance program is to mainstream our dancers into a traditional dance class. The benefit to these classes is the low teacher to student ratio (2:4-8). Skills taught in these individual lessons and classes are the same as a typical dance class, but are tailored to each dancer's unique needs and abilities in order to provide the most successful learning environment. Dancers have the opportunity to perform in our informal (April) and formal (June) dance recitals. Various styles of dance classes are available.



Art and Therapeutic Programs



ADAPTED MUSIC LESSONS @ BEYOND WORDS: MUSIC & DANCE CENTER

Population Served: AUT, ED, MD, HI, OHI, TBI, ID, SLD, VI, OI, S/LI

Dates: On-going

Ages: Ages 5+

Fee: Call for specific fees and pricing;

Funding through CCBDD, MCBDD and SCBDD accepted;

30, 45 & 60 minute weekly lessons, facilitated by a Board Certified Music Therapist

Organization: Beyond Words: Music and Dance Center

Contact: Erin Jester, MT-BC, Director/Owner

Address: 6048 Royalton Rd.; North Royalton, OH 44133 (Studios in Medina, Independence, Highland Heights & Avon)

Phone: 440-230-6100

Email: erin.jester@beyondwordscenter.org

Website: <http://www.beyondwordscenter.org>

Descriptor: Adapted music lessons focus on musical goals on the piano, guitar, ukulele, voice or foundational music skills. Beginning adaptive music lessons with a music therapist can be the first step a student needs to successfully start a lifetime of musical learning. The purpose of adaptive music lessons is to provide additional support to increase musical skills until transitional music lessons can be achieved.



Art and Therapeutic Programs

ADAPTED MUSIC LESSONS, MUSIC THERAPY ENRICHMENT CENTER, INC.

Population Served: AUT, ED, MD, HI, OHI, TBI, ID, SLD, VI, OI, S/LI

Dates: On-going

Ages: 5 years- adult

Fee: 30 minutes - \$31 / 45 minutes - \$46.50 /60 minutes - \$62

Organization: Music Therapy Enrichment Center, Inc.

Contact: Alane Krumbine, MT-BC, Co-Director

Address: 26121 Center Ridge Road, Westlake, OH 44145

Phone: 440-250-0091

Email: alane.krumbine@MTECincorporated.com

Website: www.mtecincorporated.com; <https://www.facebook.com/MTECincorporated/>;
<https://www.instagram.com/mtecincorporated/>

Descriptor: Music Lessons at MTEC are provided to children and adults of all abilities. Instruments include piano, voice, guitar, ukulele, and more.

AQUATIC THERAPY CONNECTION

Population Served: AUT, ED, MD, HI, OHI, TBI, ID, SLD, VI, OI, S/LI

Dates: Ongoing weekly sessions year-round

Ages: 1 year - adulthood

Fee: Aquatic therapy \$75/45 minute session Adapted Aquatics \$55/45 minute session

Organization: Rec2connect, LLC

Contact: Kia Picker

Address: The Mandel JCC, 26001 South Woodland Rd.; Beachwood, OH 44122

The Gemini Center, 21225 Lorain Road; Fairview Park, OH 44126

Shaw JCC 750 White Pond Drive; Akron, OH 44320

Phone: 216-973-9647

Email: Kia.rec2connect@gmail.com

Website: www.rec2connect.com

Descriptor: This program designed for individuals with special needs ages 1 through adulthood. Program begins with standardized assessment, followed by treatment plan and individual goals. Skills addressed are motor planning, sensory integration, balance, gait training, strengthening, range-of-motion, balance and swim skills.



Art and Therapeutic Programs

ART-TISM

Population Served: AUT, MD, HI, OHI, ID, SLD, VI, OI, S/LI

Dates: By appointment, must schedule

Ages: 5 and up

Fee: Call for fee information

Organization: Mother 2 Mother

Contact: Salina Miller

Address: 5234 Erwin St.; Maple Heights, OH 44137

Phone: 216-584-5564

Email: Mother2mother32@gmail.com

Website: [Facebook: @mother2mother32](https://www.facebook.com/mother2mother32)

Descriptor: Art-tism is an arts and crafts program designed for individuals with special needs. Art-tism helps to build social skills and confidence. Our motto "With art, there is no right or wrong"

ART THERAPY STUDIO

Population Served: AUT, ED, ID, MD, OI, OHI, SLD, TBI

Dates: Year-round

Ages: All

Fee: Varies depending on services

Organization: Art Therapy Studio

Contact: Cheryl Pete, MA, ATR-BC, LPC

Address: 12200 Fairhill Road; Cleveland, OH 44120

Phone: 216-791-9303

Email: info@arttherapystudio.org

Website: www.arttherapystudio.org

Descriptor: The Art Therapy Studio provides customized art therapy services for special needs populations. The professionally trained art therapists are skilled in helping people who suffer physical, emotional and cognitive losses. They offer "Discover the Artist" classes throughout the year for adults as well as specially designed programs for individuals or groups. Please call the office for information about programs to fit your needs.

Four locations: Art Therapy Studio/Fairhill; Art Therapy Studio/Metro Health Center; Art Therapy Studio/Rivers Edge; and Art Therapy Studio/Ursuline College.



Art and Therapeutic Programs



BALDWIN WALLACE SPEECH CLINIC

Population Served: AUT, ED, MD, HI, OHI, TBI, ID, SLD, VI, S/LI

Dates: Year-round programs

Ages: Any age (birth to 100+)

Fee: All services and camps provided at the Baldwin Wallace Speech Clinic are free of charge to all participants.

Organization: Baldwin Wallace University Speech Clinic

Contact: Christie Needham, Director of Clinical Education or Kathy Donafee, Office Manager

Address: Mailing Address: 275 Eastland Road, Berea, OH 44017
Physical Address: 285 Front Street, Berea, OH 44017

Phone: 440-826-2149

Email: BWSpeechClinic@bw.edu

Website: <http://www.bw.edu/resources/speech-clinic/>

Descriptor: The Baldwin Wallace Speech Clinic provides speech, language and hearing services to adults and children in the community. Student clinicians from BW's communication sciences & disorders undergraduate major and speech-language pathology graduate program provide services customized to match the individual patient's needs based on a free-standing treatment plan or as a supplement to an existing one. Students work under the supervision of licensed speech-language pathologists who are certified by the American Speech-Language-Hearing Association and licensed by the Ohio Board of Speech-Language Pathology and Audiology. Sessions are generally scheduled on a weekly basis and are offered year-round, including summer. All services are provided free of charge.



Art and Therapeutic Programs

CAMP A.B.C. (ALWAYS BE COMMUNICATING)

Population Served: AUT, ED, MD, OHI, TBI, ID, SLD, OI, S/LI, Developmental Delay; ADD/ADHD

Dates: June – August; 3 days per week, 2 hours per day

Ages: 3-6 years

Fee: Please see the website for more details. An early registration discount will apply for those who register before March 31, 2020. Reserve your child's place with a \$100 deposit and complete our easy online registration form. Camp tuition includes supplies, visual supports, and data collection. We can bill for camp to County Boards of DD, Autism Scholarship Program, Jon Peterson Scholarship, school districts, and more. If a third party is paying for camp and funds are confirmed, NO deposit is required.

Organization: Peak Potential Therapy

Contact: Holly Reimann, MA, CCC-SLP Owner and Camp Director

Address: 7689 Sagamore Hills Blvd.; Northfield, OH 44067

Phone: 330-405-8776 **Fax:** 216-706-4561

Email: hreimann@PeakPotentialTherapy.com

Website: www.peakpotentialtherapy.com

Descriptor: Therapeutic, center-based, day camp developed for preschoolers with speech & language delays. We want them to have a fun, first-camp experience. Children with aggressive behaviors or multiple disabilities can attend with support of an aide. We want to provide a fun and interactive way to further develop their communication skills & have a better summer. Camp is purposefully kept small so each child will get direct instruction from the therapist. Space is limited to a max of 6 kids/week. Staff includes a therapist and aide to maintain the ratio (3 kids to 1 adult). Reserve your child's place with a \$100 deposit and complete our easy online registration form. Camp tuition includes supplies, visual supports, and data collection. We can bill for camp to County Boards of DD, Autism Scholarship Program, Jon Peterson Scholarship, school districts, Anthem, and more. Camp fills - Register today!



Art and Therapeutic Programs

CAMP LEAFBRIDGE

Population Served: AUT, MD, HI, OHI, TBI, ID, VI, OI, S/LI

Dates: Camp Location TBD - 2020 Session 1: June 6 - July 2 (M, T, Th) 9:00am-2:00 p.m.

2020 Session 2: July 13 - August 7 (M, T, Th) 9:00 a.m.-2:00 p.m.

Cuyahoga Heights Schools - 2020 Session 1: June 6 - July 2 (M, T, Th) 8:30 a.m.-1:30 p.m.

Ages: Camp Location TBD: Session 1: 3-12 years old

Session 2: 13-22 years old

Cuyahoga Heights Schools: Session 1 (Group 1): 3-12 years old

Session 1 (Group 2): 13-22 years old

Fee: Negotiable

Organization: United Cerebral Palsy (UPC) of Greater Cleveland

Contact: Celia Chesnick

Address: 10011 Euclid Avenue, Cleveland, OH 44106

Phone: 216-791-8363

Email: cchesnick@ucpcleveland.org

Website: www.leafbridge.org

Descriptor: Camp LeafBridge is a purposeful, activity-based summer camp for students with significant physical and cognitive disabilities (Camp Location TBD) and students with mild to moderate learning differences (Cuyahoga Heights Schools). This unique camp program offers high levels of support while addressing Individual Education Program (IEP) goals through Extended School Year (ESY) services. Camp activities are planned and coordinated by a highly-skilled team from the areas of special education and physical, occupational and speech therapies. Activities include adaptive swimming, yoga, sports, arts & crafts, outdoor play on an adaptive playground and community field trips.





Art and Therapeutic Programs

CAMP SUNTASTIC DAY CAMP

Population Served: AUT, ED, OHI, TBI, ID, SLD, S/LI, Developmental Delay; ADD/ADHD

Dates: June - August Fridays only, 11:00 a.m. - 1:00 p.m.

Ages: 6 – 13 years

Fee: Please see the website for more details.

An early registration discount will apply for those who register before March 31, 2020.

Reserve your child's place with a \$100 deposit and complete our easy online registration form. Camp tuition includes supplies, visual supports, and data collection. We can bill for camp to County Boards of DD, Autism Scholarship Program, Jon Peterson Scholarship, school districts, and more. If a third party is paying for camp and funds are confirmed, NO deposit is required.

Organization: Peak Potential Therapy

Contact: Holly Reimann, MA, CCC-SLP, Owner and Camp Director

Address: 7689 Sagamore Hills Blvd.; Northfield, OH 44067

Phone: 330-405-8776 **Fax:** 216-706-4561

Email: hreimann@peakpotentialtherapy.com

Website: www.campsuntastic.com

Descriptor: Therapeutic, community-based, day camp developed for high functioning children with various disabilities. Children with aggressive behaviors or with multiple disabilities can attend with support of an aide. We want to provide a fun & interactive way to further develop social skills & have a better summer. Kids are encouraged to use their skills in different settings with small group instruction. A different field trip every Friday, which may include: the Cleveland Zoo, Waterworks, Zip City, & more. Our therapist will meet your child at the activity for the day. Camp is purposefully kept small so each child will get direct instruction from the therapist. If you want a full week of camp, then "SMILE Summer Camp" is a good fit! Space is limited to a max of 6 kids/week. Staff includes: a therapist & a camp assistant. Camp fills - Register today!



Art and Therapeutic Programs

CAMP WONDER

Population Served: AUT, ED, MD, OHI, TBI, ID, SLD, OI, S/LI, Developmental Delay; ADD/ADHD

Dates: June - August; Monday through Friday; 9:00 a.m. - 3:00 p.m.

Ages: 6 - 10 years of age

Fee: Please see the website for more details.

An early registration discount will apply for those who register before March 31, 2020.

Reserve your child's place with a \$100 deposit and complete our easy online registration form. Camp tuition includes supplies, visual supports, and data collection. We can bill for camp to County Boards of DD, Autism Scholarship Program, Jon Peterson Scholarship, school districts, Anthem, and more. If a third party is paying for camp and funds are confirmed, NO deposit is required.

Organization: Peak Potential Therapy

Contact: Holly Reimann, MA, CCC-SLP, Owner and Camp Director

Address: 7689 Sagamore Hills Blvd.; Northfield, OH 44067

Phone: 330-405-8776 **Fax:** 216-706-4561

Email: hreimann@peakpotentialtherapy.com

Website: www.campsuntastic.com

Descriptor: Academic & therapeutic day camp based on the principles of Applied Behavior Analysis, directed by a certified therapist. Your child will participate in daily learning activities designed to improve social skills, communication, behavior, independence, and academics. Group activities will include science experiments, team projects, group art projects, and more. Weekly themes are exciting and engaging, which encourage active participation and learning. Our daily schedule provides opportunities to explore, experiment, develop problem-solving skills, and create friendships.





Art and Therapeutic Programs

CATALYST FARM SUMMER CAMP

Population Served: AUT, MD, TBI, ID, SLD, S/LI

Dates: Call for information

Ages: Our camp program is intended for children with a cognitive age of 3 -10. We also divide the age groups when needed in order to make sure everyone is doing age appropriate activities.

Fee: Call for information

Organization: Catalyst Farm

Contact: Jillian D. Pelland, OTR/L

Address: 1021 Ridgewood Rd.; Wadsworth, OH 44281

Phone: 234-206-0815

Email: info@catalystfarm.com

Website: www.catalystfarm.com

Descriptor: Summer camp on the farm is always a big hit! Our camps are organized and run by our Occupational, Physical and Speech therapists, which allows us to work therapy goals into our daily camp activities. The children will learn to take care of the animals and the farm itself. 9:30-12:30 Monday-Friday with an additional lunch hour option available. These camps are limited to 8 campers each week and sell out quickly so don't delay in signing up!

CENTER FOR MUSIC THERAPY @ THE MUSIC SETTLEMENT

Population Served: AUT, ED, MD, HI, OHI, TBI, ID, SLD, VI, OI, S/LI

Dates: June 2020 – August 2020

Ages: All Ages

Fee: Call for information

Organization: The Music Settlement Center for Music Therapy

Contact: Anne M. Reed, Interim Chair

Address: University Circle-11125 Magnolia Drive, Cleveland, OH 44106;

Ohio City-2610 Detroit Avenue, Cleveland, OH 44113

Phone: 216-421-5806 **Fax:** 216-231-5007

Email: areed@themusicsettlement.org

Website: www.themusicsettlement.org

Descriptor: Our pioneering Center for Music Therapy was established in 1966 to positively impact the lives of children and adults facing a wide range of life's challenges. Music therapy supports learning and the transfer of skills, improves quality of life, and offers hope to those enduring challenging diagnoses, illness or pain. Music therapy can also benefit people who are working toward rehabilitation or are being served by hospice. Music therapists use music-based interventions in a clinical setting to help people accomplish specific individualized goals.

Programs include: Individual Music Therapy, Group Music Therapy, Arts N Play, Early Childhood Camps, Center for Music Camps



Art and Therapeutic Programs

CONNECT AND MOVE

Population Served: AUT, ED, MD, HI, OHI, TBI, ID, SLD, VI, OI, S/LI

Dates: Begins February 4, 2020 and runs weekly year-round

Ages: 7 – 14 Years

Fee: \$160/ 4 weeks

Organization: Rec2connect, LLC

Contact: Kia Picker

Address: The Gemini Center, 21225 Lorain Road; Fairview Park, OH 44126

Phone: 216-973-9647 **Fax:** 330-319-8737

Email: Kia.rec2connect@gmail.com

Website: www.rec2connect.com

Descriptor: This program is designed for children with special needs ages 7-14 to develop cooperative play skills in a group setting, while improving gross motor development through introduction to sports and fitness. Skills addressed are sportsmanship, following rules and structure of game, develop lifelong leisure skills, and increase physical activity.

CONNECT AND PLAY

Population Served: AUT, ED, MD, HI, OHI, TBI, ID, SLD, VI, OI, S/LI

Dates: Begins February 4, 2020 and runs monthly year-round

Ages: 3-6 years

Fee: \$160/4 week session

Organization: Rec2connect, LLC

Contact: Kia Picker

Address: The Gemini Center, 21225 Lorain Road - Fairview Park, OH 44126

Phone: 216-973-9647

Email: Kia.rec2connect@gmail.com

Website: www.rec2connect.com

Descriptor: This program is designed for children 3-6 with special needs to develop social skills in a group setting, while improving gross motor development through game play in a fun and engaging setting. Skills addressed will be waiting, turn taking, following directions in group, safety, and engaging with peers.



Art and Therapeutic Programs

COUNSELING AT CATALYST FARM

Population Served: ED

Dates: Year Round

Ages: Call for information

Fee: Call for information

Organization: Catalyst Farm

Contact: Jillian D. Pelland, OTR/L

Address: 1021 Ridgewood Rd.; Wadsworth, OH 44281

Phone: 234-206-0815

Email: info@catalystfarm.com

Website: www.catalystfarm.com

Descriptor: We are excited to be offering counseling services on the farm! We've all heard about the connection between humans and animals. We believe strongly in that connection here at Catalyst Farm and know that the animals really make a positive impact on our clients. We use animal assisted therapy techniques to help our clients reach their fullest potential!

CREATIVE ARTS THERAPIES, BECK CENTER FOR THE ARTS

Population Served: AUT, ED, ID, MD, OI, OHI, SLD, S/LI, TBI, VI

Dates: Call for information

Ages: All ages

Fee: Varies depending on service

Organization: The Beck Center for the Arts

Contact: Nicole Price, MT-BC in Creative Arts Therapies

Address: 17801 Detroit Avenue, Lakewood, OH 44107

Phone: 216-521-2540, ext. 34

Email: nprice@beckcenter.org

Website: www.beckcenter.org

Descriptor: Through the use of the creative arts therapies, individuals with special needs, which include mental, physical or developmental disabilities, are encouraged to maximize their potential. Using music and art as a therapeutic tool, individuals address academic, motor, emotional, and social skills as well as talents in the fine arts. Each participant receives individualized treatment with personally designed goals tailored to meet his/her needs. Weekly sessions are offered on an individual, paired or group basis. Call for more information.



Art and Therapeutic Programs

D.E.A.F. – DEDICATED TO THE ELIMINATION OF ASSUMPTIONS AND FALLACIES

Population Served: AUT, HI, SLD

Dates: Call for information

Ages: Call for information

Fee: Call for information

Organization: Cleveland Hearing and Speech Center, SignStage

Contact: William Morgan

Address: 11635 Euclid Avenue, Cleveland, OH 44106

Phone: 216-325-7559

Email: whmorgan@chsc.org

Website: www.chsc.org

Descriptor: Theater Arts in Residence - for all ages. Program integrates Theatre Arts into Language Arts curriculum.

D.E.A.F. – Designed for all ages. Teaches about conflicts and conflict resolution between the deaf and hearing communities. Teaches non-verbal communication through gesture, mime, and improvisation.

Call for more information on customizing a workshop for your school or organization.





Art and Therapeutic Programs

ENCOURAGING CONNECTIONS

Population Served: AUT, HI, OHI

Dates: June 8 – 10; 15 – 17; 22 - 24, 2020

Ages: 14-19 years

Fee: \$600.00

Organization: Encouraging Words, LLC

Contact: Hannah Agoston M.S. CCC-SLP, Services Coordinator

Address: The Well CDC 647 E Market St, Akron, OH 44304, USA

Phone: 440-232-8329

Email: encouragingwordstherapy@gmail.com

Website: www.encouragingwordstherapy.com

Descriptor: Encouraging Connections is a 3 week program for 14-19 year olds adapted with permission from the PEERS Program. Enrollment closes May 8th. This is a discussion-based group program that helps to encourage strong social comprehension skills. This engaging program helps develop the ability to share and take turns in a group. In each meeting a different core topic from the PEERS Program will be presented and discussed. Topics include how to choose friends, make small talk, how to “trade information and the nuances of conversation”, how to use humor, and handling teasing and embarrassing feedback. This group will be facilitated by a licensed Speech-Language Pathologist and life & career coach.

- Soon to be a NEON approved provider.

EQUINE ASSISTED LEARNING

Population Served: AUT, ED

Dates: Five sessions, small groups; dates to be determined. Check our webpage or follow on us on Facebook. Typically once or twice a week.

Ages: Youth ages 7 to 12; Teens ages 13 to 18;

Fee: Call for information

Organization: Stable Solutions

Contact: Loree Stubblefield, MSW, LSW; Deanna Eshler, LPCC-S

Address: 12381 Easton Street NE Alliance, OH 44601

Phone: 330-733-3132

Email: ponykids@neo.rr.com

Website: www.Stablesolutionsfarm.com

Descriptor: This program is a non-riding program lead by licensed mental health professionals. The goal is to improve problem solving skills and improve emotional well-being to work through life challenges. This program utilizes the eagala model. There is no riding and no horsemanship taught during these sessions. This program happens on the ground with horses and is experiential and solution oriented.



Art and Therapeutic Programs



FEEDING FOUNDATIONS

Population Served: AUT, OHI, picky eaters

Dates: June 22- July 3, 2020; Monday through Friday

Ages: 3-5 years

Fee: Varies; insurance and ODE scholarship provides

Organization: Galvin Therapy Center

Contact: Galvin Therapy

Address: 25221 Miles Rd Ste F; Warrensville Heights, OH 44128

Phone: 216-514-1600 **Fax:** 216-292-3291

Email: info@galvintherapycenter.com

Website: <http://galvintherapycenter.com/>

Descriptor: Helping preschoolers learn to love healthy foods and develop balanced diets



Art and Therapeutic Programs

FLIGHT

Population Served: AUT, ED, MD, HI, OHI, TBI, ID, SLD, S/LI

Dates: September 10, 2019 – June 7, 2020; starting again September 7, 2020

Ages: 2 - 7

Fee: \$100 per day including one hour of therapy

Organization: Reaching New Heights, LLC

Contact: Donna Culley

Address: 3505 East Royalton Road; Suite 221; Broadview Heights, OH

Phone: 440-241-8366 Fax: 440-736-7600

Email: dculley@reachingnewhts.com

Website: www.reachingnewhts.com

Descriptor: FLIGHT is a school alternative, using the Autism or Jon Peterson Scholarship as a home schooling option. Can also be privately funded or paid for by the school district of residence. This program focuses on the individual's academic, communication, sensory, fine motor, ADL, behavioral needs in a small group setting. Facilitated by therapists including BCBA, RBT, SLP, OT, and IS. Individual therapies can be funded by private insurance.

FLOURISH

Population Served: AUT, MD, HI, OHI, TBI, ID, SLD, OI, S/LI

Dates: Tuesdays 3:30-4:30 in segments; contact us for current schedule

Ages: 3-5 Years (flexible)

Fee: \$25/session; discount for 6 weeks prepaid

Organization: Talk Play Grow

Contact: Beth Brady M.A. CCC-SLP

Address: 1440 Rockside Rd Ste 201, Parma, OH 44134

Phone: 440-427-4433

Email: Ebrady@talkplaygrowllc.com

Website: www.talkplaygrowllc.com

Descriptor: FLOURISH is our literacy based language enrichment program. Using a new book every week, we work on various expressive and receptive language skills through play! The program is run by licensed and ASHA certified Speech Language Pathologist. Spots are limited so be sure to register in advance!



Art and Therapeutic Programs

HEARING IMPAIRED: AUDITORY, SPEECH-LANGUAGE THERAPY

Population Served: HI

Dates: Starting May 2020 - Year Round

Ages: Infant through Adulthood

Fee: \$100 - \$130 Sliding Scale

Organization: Encouraging Words, LLC

Contact: Hannah Agoston M.S. CCC-SLP, Services Coordinator

Address: The Well CDC 647 E Market St, Akron, OH 44304, USA

Phone: 440-232-8329

Email: encouragingwordstherapy@gmail.com

Website: www.encouragingwordstherapy.com

Descriptor: My clients and their families want to become their best selves. Working directly with families to develop & enable my clients to be fully present and expressed in the world. Therapy is provided to individuals with hearing loss through their designated mode of communication (e.g. spoken English or ASL). A listening and spoken language therapeutic approach or the use of ASL and a connection to the Deaf community are utilized based upon family preferences.

- Articulation
- Auditory Training
- Executive Functioning
- Language Development
- Play Skills
- Pragmatic Language (e.g. Social Skills)
- Voice & Resonance

Therapy will be facilitated by a licensed Speech-Language Pathologist with 15 years of experience working with children who have hearing loss in a variety of settings and modes of communication.

- Soon to be a NEON approved provider.



Art and Therapeutic Programs

INSPIRE

Population Served: AUT, ED, MD, HI, OHI, TBI, ID, SLD, S/LI

Dates: June 8 – August 7, 2020

Ages: 2-17 years

Fee: Call for fee information

Organization: Reaching New Heights, LLC

Contact: Donna Culley

Address: 3505 East Royalton Road; Suite 221; Broadview Heights, OH

Phone: 440-241-8366 **Fax:** 440-736-7600

Email: dculley@reachingnewhts.com

Website: www.reachingnewhts.com

Descriptor: This is a summer ESY program that focuses on maintaining a school routine, addressing social skills, and providing interventions as prescribed on the IEP including SLP, OT, ABA, IS services. We treat the individual needs of each child in a fun, innovative program with high adult to child ratios. Children are grouped by age as well as their specific strength and weaknesses. Can be funded by Autism or Jon Peterson Scholarship, school district, or private pay. Individual therapies can be funded by private insurance.

LAKESHORE SPEECH THERAPY, LLC

Population Served: AUT, ID, MD, SLD, S/LI

Dates: Year-round

Ages: 18 months and up

Fee: Call for information

Organization: Lakeshore Speech Therapy, LLC

Contact: Ellen Spear M.A., CCC/SLP, Owner or Kelly Rigo, Office Manager

Address: 815 Crocker Road, Suite #3; Westlake, OH 44145

Phone: 440-471-7190 **Fax:** 480-287-8108

Email: espear@lakeshorespeech.com or krigo@lakeshorespeech.com

Website: www.lakeshorespeech.com

Descriptor: Speech-language therapy services provided year-round for ages 18 months to adult. Social skills groups are offered in the summer for different age groups while others continue year-round.



Art and Therapeutic Programs

MUSIC & DANCE SUMMER CAMPS @ BEYOND WORDS

Population Served: AUT, ED, MD, HI, OHI, TBI, ID, SLD, VI, OI, S/LI

Dates: See website for specific camp locations, dates and times

Ages: See website for specific ages for each camp.

Fee: Various, See website for specific programming rates

Organization: Beyond Words: Music & Dance Center

Contact: Erin Jester, MT-BC, Director/Owner

Address: Studios in North Royalton, Medina, Independence, Highland Heights & Avon.

Phone: 440-230-6100

Email: erin.jester@beyondwordscenter.org

Website: <http://www.beyondwordscenter.org>

Descriptor: Beyond Words is an organization of music therapists and adapted dance instructors devoted to developing every students' potential through artistic expressions. Our mission is to create accessible and innovative programming through the arts to enrich the lives of those we serve. We believe in a person-centered approach to teaching, utilizing each individuals' strengths and interests. Below is a list of our summer camps, which descriptions, camp dates/times and locations can all be found on our website. Unsure of the best fit for your child? Call us!

- Speaking Through Song Camp - speech and music therapy
- Showstopper Camp - singing/dancing/acting
- Ukulele Camp
- Music in Color Camp
- Everything Disney Dance Camp
- PASS Camp - performing arts & social skills
- Ballerina Dance Camp
- Frozen in Summer Camp
- Jam Session & Songwriting Camp



Art and Therapeutic Programs

MUSIC THERAPY @ BEYOND WORDS: MUSIC & DANCE CENTER

Population Served: AUT, ED, MD, HI, OHI, TBI, ID, SLD, VI, OI, S/LI

Dates: On-going

Ages: All ages

Fee: Call for specific fees and tuition; 30-45-60 min session options scheduled 1-2 times per week; funding through CCBDD, MCBDD, SCBDD, Autism & Jon Peterson Scholarship accepted.

Organization: Beyond Words: Music & Dance Center

Contact: Erin Jester, MT-BC, Director/Owner

Address: Main Studio/North Royalton: Beyond Words Studio, 6048 Royalton Rd. (Studios at Medina, Independence, Highland Heights, and Avon)

Phone: 440-230-6100

Email: erin.jester@beyondwordscenter.org

Website: <http://www.beyondwordscenter.org/portfolio/music-therapy/>

Descriptor: Music therapy uses music as the therapeutic stimulus to achieve non-musical treatment goals. Goals can address a wide range of physical, emotional, gross/fine motor, cognitive, and social needs. Weekly sessions range from 30-60 minutes and are facilitated by a Board Certified Music Therapist.



Art and Therapeutic Programs

MUSIC THERAPY: MUSIC THERAPY ENRICHMENT CENTER, INC.

Population Served: AUT, ED, MD, HI, OHI, TBI, ID, SLD, VI, OI, S/LI

Dates: On-going

Ages: All ages

Fee: *FREE 30-Minute evaluations*, Funding through CCBDD, LCBDD, Autism Scholarship, and Jon Peterson

Organization: Music Therapy Enrichment Center, Inc. (MTEC)

Contact: Alane J. Krumbine, MT-BC, Co-Director

Address: 26121 Center Ridge Road, Westlake, OH 44145

Phone: 440-250-0091

Email: alane.krumbine@MTECincorporated.com

Website: www.MTECincorporated.com ; <https://www.facebook.com/MTECincorporated/>;
<https://www.instagram.com/mtecincorporated/>

Descriptor: Music Therapy (MT) at MTEC is uniquely designed for each individual who utilizes our services. Whether receiving MT in an individual session or a small group, our clients' needs and strengths are thoroughly assessed. Treatment is designed to address the non-music goals and objectives of each child or adult. MTEC music therapists treat individuals with a wide variety of diagnoses and needs.





Art and Therapeutic Programs

OT, PT AND SLP AT CATALYST FARM

Population Served: AUT, MD, OHI, TBI, ID, SLD, OI, S/LI

Dates: Year-round

Ages: 3-25

Fee: Call for information

Organization: Catalyst Farm

Contact: Jillian D. Pelland, OTR/L

Address: 1021 Ridgewood Rd.; Wadsworth, OH 44281

Phone: 234-206-0815

Email: info@catalystfarm.com

Website: www.catalystfarm.com

Descriptor: We offer private OT, PT and SLP sessions with the farm as our clinic. The children work with the animals, the barn and the land to work towards their therapy goals. The farm setting offers a uniquely motivating experience for our clients and they actually have fun while they work! While farm based therapy is our most popular program, we also offer traditional therapy techniques in our onsite clinic.

PEDIATRIC NEUROPSYCHOLOGY CENTER RAINBOW BABIES & CHILDREN HOSPITAL

Population Served: AUT, ED, GT, HI, ID, MD, OI, OHI, SLD, S/LI, TBI, VI

Dates: Year-round

Ages: 5 – 18 years (If under 5 years, call office for information). Also college age

Fee: Call for information

Organization: Rainbow Babies & Children's Hospital

Contact: Christine T. Barry, Ph.D.

Address: 11100 Euclid Avenue, Cleveland, OH 44106

Phone: 216-844-3230

Email: N/A

Website: <http://www.uhhospitals.org/>

Descriptor: Assessment available for children with learning problems. Also serves individuals with neurological disorders. For more information, intake form or other locations, call 216-844-3230.



Art and Therapeutic Programs

PONY TALES FARM

Population Served: AUT, ED, HI, ID, MD, OHI, SLD, S/LI, VI

Dates: Spring, Summer & Fall classes

Ages: 2 years - adults

Fee: Call for information

Organization: Pony Tales Farm

Contact: Lorraine Schaffner

Address: 13360 Cowley Road, Columbia Station, OH 44028

Phone: 440-891-9992

Email: ponytalesfarms@gmail.com

Website: www.ponytalesfarm.org

Descriptor: Pony Tales Farm is a non-profit organization with the goals of helping children and rescuing animals (horses). We offer riding lessons, pony camps, therapeutic riding and interaction on the farm with nature as well as all our other farm animals. We also offer field trips and other events (birthday parties, festival events, etc.)

PSYCHOLOGICAL SERVICE

Population Served: AUT, ED, HI, OHI, TBI, SLD, VI, S/LI, Social, emotional, behavioral problems

Dates: Ongoing

Ages: 0-22 years

Fee: Call for information

Organization: Meghan Barlow & Associates

Contact: Meghan Barlow

Address: 20220 Center Ridge Road, Ste. 320; Rocky River, OH 44116

Phone: 440-409-0307 **Fax:** 440-815-2244

Email: meghan@drmeghanbarlow.com

Website: www.meghanbarlowandassociates.com

Descriptor: Meghan Barlow and Associates is a multidisciplinary group focused on children, adolescents, and adults. Psychologists are available to provide diagnostic assessments and comprehensive evaluations, therapists of different backgrounds are available to provide individual, family, marriage, and group therapies covering a variety of concerns. A behavior therapist runs ongoing social skills groups. A doctoral level speech and language therapist is available to provide evaluations, individual, and group therapy. We can conduct school and off-site observations as well as Independent Education Evaluations.



Art and Therapeutic Programs

RAZORSHARKS SWIM TEAM

Population Served: AUT, ED, MD, HI, OHI, TBI, ID, SLD, VI, OI, S/LI

Dates: January 6 – March 23, 2020 and every 12 weeks year-round

Ages: 7 and up

Fee: \$200 per 12 week session

Organization: Rec2connect

Contact: Kia Picker

Address: Gemini Center; 21225 Lorain Rd.; Fairview Park, OH 44126 and Beachwood High School; 25100 Fairmount Blvd.; Beachwood, OH 44122

Phone: 216-973-9647

Email: Kia.rec2connect@gmail.com

Website: www.rec2connect.com

Descriptor: This program designed for individuals with special needs ages 7 through adulthood. 1 hour weekly practices offered with focus on swim stroke refinement, endurance, social skills, increasing ability to swim competitively in a fun and engaging atmosphere. Swim meets provided every 12 weeks and opportunities to participate in USA swim meets.





Art and Therapeutic Programs

RECREATIONAL RESPITE PROGRAM (DD)

Population Served: AUT, OHI, SLD, S/LI, CD

Dates: January 24-26, 2020

February 7-9, 2020

March 13-15, 2020

April 3-5, 2020

May 8-10, 2020

June 5-7, 2020

NO JULY RESPITE

August 21-23, 2020

September 18-20, 2020

October 23-25, 2020

November 6-8, 2020

December 4-6, 2020

Ages: 13 years and up

Fee: See website for information

Organization: Community Services of Summit County

Contact: Tess Flannery

Address: 812 Biruta Street; Akron, OH 44307

Phone: 330-762-2961, ext. 224

Email: tflannery@clevelandcatholiccharities.org

Website: <http://ccdocle.org/summit-county>

Descriptor: Social and recreational opportunities, field trips, and camp weekends. One weekend each month, Camp Christopher opens its doors to provide persons 13 and older with developmental disabilities the opportunity to spend time relaxing and enjoying activities and field trips. The Community Respite Program typically operates from 6 pm on Friday to 11:00 am on Sunday. Campers may attend all or part of these weekends. Shuttle services are provided at various locations in Summit County.

On a typical weekend, campers may enjoy the activities on the grounds like swimming, horseback riding, hayrides, and campfires. Or they may travel to local festivals, recreational activities, restaurants and more.

Staff that reside in the cabins with our Discovery Campers receive all required training of Home and Community Based Waiver Providers for the State of Ohio. The ratio for the program is 1 staff person for every 5 campers in attendance.

Due to the program's active schedule, participants must have basic personal care skills and be capable of demonstrating appropriate behavior, especially in public places. Assistance is available to dispense medications and minor medical treatments throughout the session.

Campers stay in ramped, dormitory style cabins segregated by gender, bunk beds and one in-cabin restroom. Although some terrain on the campgrounds is rough, the facility includes walkways to and from key areas.

The individual, local county board of developmental disabilities, and the Medicaid Waiver may provide funding for this program.



Art and Therapeutic Programs

ROYALTON MUSIC CENTER

Population Served: AUT, ED, GT, HI, ID, MD, OI, OHI, SLD, S/LI, TBI, VI

Dates: Year-round

Ages: All

Fee: \$110.00 per month for 30 minute sessions

\$165.00 per month for 45 minute sessions

\$220.00 per month for 60 minute sessions

Organization: Royalton Music Center

Contact: Danielle Musat or Megan Malko

Address: 10167 Royalton Road; North Royalton, OH 44133

Phone: 440-237-9400

Email: m.malko@royaltonmusic.com

Website: www.royaltonmusic.com , www.professionalsuitebyrnc.com

Descriptor: Sessions are one-on-one and are based on individual needs. Weekly sessions are most common. Please call for days and times available. Location also offers private lessons which may be catered to your child's needs. Preschool tours are also available. Call for information.





Art and Therapeutic Programs

SMALL GROUPS AT CATALYST FARM

Population Served: AUT, MD, TBI, ID, SLD, OI, S/LI

Dates: 6 week sessions offered year-round.

Ages: We have groups available for individuals with a cognitive age from 3-25

Fee: Groups range in price from \$150-\$300

Organization: Catalyst Farm

Contact: Jillian D. Pelland, OTR/L

Address: 1021 Ridgewood Rd.; Wadsworth, OH 44281

Phone: 234-206-0815

Email: info@catalystfarm.com

Website: www.catalystfarm.com

Descriptor: Our small groups offer a therapeutic recreational activities for children and young adults of all abilities. Our groups focus on skills such as communication, working together, motor skills, sensory processing and job skills. Visit our website for a detailed description of each group.

S.M.I.L.E. SUMMER CAMP (SPECIAL MEMORIES INCLUDE LAUGHTER AND ENRICHMENT SUMMER CAMP)

Population Served: AUT, ED, MD, OHI, TBI, ID, SLD, OI, S/LI, Developmental Delay; ADD/ADHD

Dates: End of May - August; Monday - Friday, 9:00 am - 3:00 pm

Ages: 6-10 years of age and 10-16 years of age (alternating weekly sessions)

Fee: Please see the website for more details.

An early registration discount will apply for those who register by March 31, 2020.

Reserve your child's place with a \$100 deposit and complete our easy online registration form. Camp tuition includes supplies, visual supports, and data collection. We can bill for camp to County Boards of DD, Autism Scholarship Program, Jon Peterson Scholarship, school districts, and more. If a third party is paying for Camp and funds are confirmed, NO deposit is required.

Organization: Peak Potential Therapy

Contact: Holly Reimann, MA, CCC-SLP, Owner and Camp Director

Address: 7689 Sagamore Hills Blvd.; Northfield, OH 44067

Phone: 330-405-8776 Fax: 216-706-4561

Email: hreimann@peakpotentialtherapy.com

Website: www.smilesummercamp.com

Descriptor: Therapeutic, community-based, day camp developed for high functioning children with various disabilities. Children with aggressive behaviors or with multiple disabilities can attend with support of an aide. We want to provide a fun & interactive way to further develop social skills & have a better summer. Kids are encouraged to use their skills in different settings with small group instruction. A different field trip every day, which may include: the Cleveland Zoo, Waterworks, Zip City, & more. We begin our day at the therapy center, transport the kids to the field trips, and return to the center at the end. Camp is purposefully kept small so each child will get direct instruction from the therapist. If you cannot attend a full week, then "Camp Suntastic" is a good fit! Space is limited to a max of 6 kids/week. Staff includes: a therapist & a camp assistant. Camp fills - Register today!



Art and Therapeutic Programs

SOCIAL SKILLS/BEHAVIORAL GROUPS

Population Served: AUT, ED, ID, SLD

Dates: 6 weeks; dates to be determined. Other days can be arranged.

Ages: 7 to 18; small groups

Fee: Call for information

Organization: Stable Solutions

Contact: Loree Stubblefield, MSW, LSW; Deanna Eshler, LPCC-S

Address: 12381 Easton Street NE Alliance, OH 44601

Phone: 330-733-3132

Email: stablesolutionsfarm@gmail.com

Website: <https://www.stablesolutionsfarm.com>

Descriptor: This group is held at Stable Solutions farm. Specifically for pre-teens and teens who are interested in working with animals, enjoy being outdoors, have a desire to improve self-regulation, build relationship skills, confidence, leadership and problem solving skills. This group does not require riding to participate, riding is an option.

SPEECH AND LANGUAGE THERAPY BY SOLUTIONS BEHAVIORAL CONSULTING

Population Served: AUT, ED, MD, ID, SLD, S/LI

Dates: Call for information

Ages: All ages

Fee: Call for Information

Organization: Solutions Behavioral Consulting

Contact: Ashley Madonio

Address: 8536 Crow Drive Suite 240; Macedonia, OH. 44056

Phone: 330-888-9596

Email: amadonio@solutionsbehavioral.com

Website: www.solutionsbehavioral.com

Descriptor: Services include assessment and individual home and school based therapy. Services provided for expressive and receptive language disorders, pragmatic/social skill deficits, and augmentative communication.



Art and Therapeutic Programs

SPEECH THERAPY (INDIVIDUAL)

Population Served: AUT, ED, MD, HI, OHI, TBI, ID, SLD, S/LI

Dates: Ongoing

Ages: Birth through adult

Fee: Varies based on session length

Organization: Sprout Therapy, LLC

Contact: Lori Kallevig

Address: Strongsville (Ehrnfelt Recreation Center) North Royalton (Beyond Words) & In-home services

Phone: 440-316-2416

Email: SPROUTtherapyLLC@gmail.com

Website: www.sprouttherapyllc.com

Descriptor: We offer Individual Speech/Language Therapy services provided at home, in the community, or in an outpatient clinical setting. We believe in a family based and natural approach to therapy. Therapy is designed specifically around each child's needs, interests, and is based on age and ability. Therapy is aimed to be fun for the child and occurs in a natural/play based approach. We work with families to set challenging, yet achievable goals for each child so together we can achieve growth. Each session consists of teaching new skills through innovative and evidence-based practices. Every clinician is an ASHA certified provider and is licensed with the Ohio Board of Speech Language Pathology and Audiology. We accept private pay, family resource funds, and are in network providers for several insurance companies.

SUMMER SESSION SKILLS/BEHAVIORAL GROUPS

Population Served: AUT, ED, ID, SLD

Dates: Twice a Week/Three Week sessions Dates and times to be announced. Typically times are 9:30 am to 12:30 pm or 1:00 pm to 4:00 pm.

Ages: 8 and up

Fee: Call for information

Organization: Stable Solutions

Contact: Loree Stubblefield, MSW, LSW; Deanna Eshler, LPCC-S

Address: 12381 Easton Street NE Alliance, OH 44601

Phone: 330-733-3132

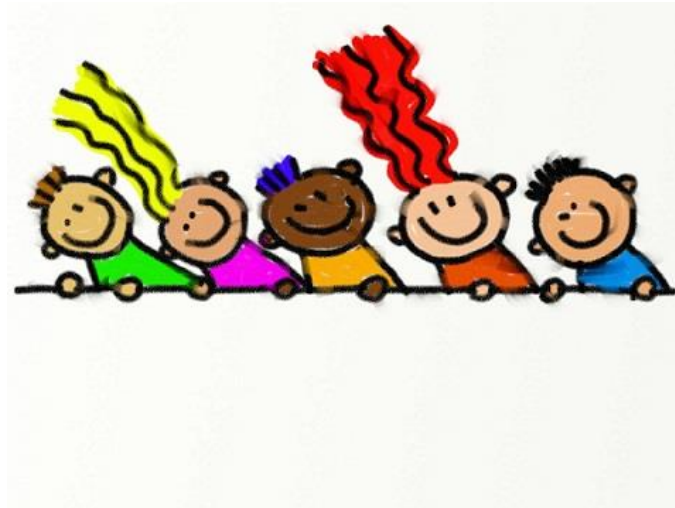
Email: stablesolutionsfarm@gmail.com

Website: <http://www.stablesolutionsfarm.com/>

Descriptor: Social/Behavioral skills group for kids interested in working with animals, improving emotional regulation, building relationships and problem solving skills. May include riding but riding is not required. Activities are held outdoors or in an indoor arena. Sessions may also include swimming during July and August groups. Our Programs are led by a Licensed Social Worker and Clinical Counselor.



Art and Therapeutic Programs



SUMMER SOCIAL THINKING

Population Served: AUT, ED, OHI, SLD, S/LI

Dates: August 10 - 21, 2020; Monday through Friday

Ages: 7-10 years

Fee: Varies; \$300

Organization: Galvin Therapy Center

Contact: Galvin Therapy

Address: 25221 Miles Rd Ste. F; Warrensville Heights, OH 44128

Phone: 216-514-1600 **Fax:** 216-292-3291

Email: info@galvintherapycenter.com

Website: <http://galvintherapycenter.com/>

Descriptor: Helping children learn to interact well with peers, solve problems, and participate in group activities.



Art and Therapeutic Programs

THE LEARNING GROOVE: PARENT/CHILD MUSIC CLASS @ BEYOND WORDS MUSIC & DANCE CENTER

Population Served: AUT, ED, MD, HI, OHI, TBI, ID, SLD, VI, OI, S/LI

Dates: 10-week sessions in Winter, Spring, Summer and Fall

Ages: Newborn to age 5

Fee: \$150 for 1 child, \$250 for 2 children

Organization: Beyond Words: Music & Dance Center

Contact: Erin Jester, MT-BC, Director/Owner

Address: North Royalton: Beyond Words Studio, 6048 Royalton Rd. (Studios in Medina, Independence, Highland Heights, and Avon)

Phone: 440-230-6100

Email: erin.jester@beyondwordscenter.org

Website: <http://www.beyondwordscenter.org/portfolio/the-learning-groove/>

Descriptor: Our inclusive music & movement class is led by a Music Therapist and focuses on empowering children to reach their full musical, academic and creative potential. The Learning Groove was created by the author (Eric Litwin) of "Pete the Cat" picture books, who is also a special needs educator. Your child will learn and increase musical skills of rhythm, pitch and melody; language skills of making choices and emerging sounds; fine motor coordination in isolation of finger movements; interpersonal skills; cultural awareness; creative expression and academic readiness. This class is designed for children with special needs and those developing neuro-typically to participate together.

THE M.I.L.E. (MANAGEMENT FOR INDEPENDENT LIVING ENRICHMENT) EXPLORER PROGRAM

Population Served: AUT, TBI, ID, SLD, S/LI, Developmental Delay; ADD/ADHD

Dates: June – August; Mondays

Ages: 3-22 years

Fee: Please see the website for more details. An early registration discount will apply for those who register before March 31, 2020. Reserve your child's place with a \$100 deposit and complete our easy online registration form. Camp tuition includes supplies, visual supports, and data collection. We can bill for camp to County Boards of DD, Autism Scholarship Program, Jon Peterson Scholarship, school districts, and more. If a third party is paying for camp and funds are confirmed, NO deposit is required.

Organization: Peak Potential Therapy

Contact: Holly Reimann, MA, CCC-SLP Owner and Camp Director

Address: 7689 Sagamore Hills Blvd.; Northfield, OH 44067

Phone: 330-405-8776 **Fax:** 216-706-4561

Email: hreimann@PeakPotentialTherapy.com

Website: www.peakpotentialtherapy.com

Descriptor: Recreational and therapeutic day program with a focus on social communication, executive functioning, life skills, and jobs skills training. Daily trips into the community are provided for job exploration, life skills building, and some fun activities too! An evaluation is required prior to attending, and teens/young adults may be accepted based on results. This program is led by a certified therapist with experience in transition planning.



Art and Therapeutic Programs

THE SCHOOL OF DANCING WHEELS: Classes & Summer Camps for Students of All Abilities

Population Served: AUT, MD, OHI, ID, OI, S/LI

Dates: January - May, July, September - December

Ages: 3 & Up

Fee: Call for information

Organization: Dancing Wheels Company & School

Contact: Deborah Reilly

Address: 3030 Euclid Ave.; Suite 100; Cleveland OH 44115

Phone: 216-432-0306

Email: school@dancingwheels.org

Website: www.dancingwheels.org

Descriptor: The Dancing Wheels Company & School is a Cleveland based arts and disabilities organization that unites the talents of individuals both with and without disabilities. The School of Dancing Wheels is a multi-arts school that offers classes throughout the week from September through May for students of all abilities, ages 3 and up. We are passionate about inspiring and shaping creativity, while promoting self-awareness, self-confidence, equality, and inclusion in all our classes. Along with in-studio classes, we offer residencies, K-12 programs, community programs, summer workshops, and youth camps. Our lifelong mission is to enhance integration and diversity in the arts, provide successful, independent, and creative role models for those with disabilities, and erase negative stereotypes about people with disabilities in professional careers.





Art and Therapeutic Programs

THERAPEUTIC RIDING

Population Served: AUT, ED, MD, HI, OHI, TBI, ID, SLD, VI, OI, S/LI

Dates: Year-round Therapeutic Riding sessions and Horsemanship programs

Ages: 4 and up

Fee: Call for information

Organization: Stable Solutions Farm

Contact: Loree Stubblefield, MSW, LSW

Address: 12381 Easton Street NE Alliance, OH 44601

Phone: 330-733-3132

Email: ponykids@neo.rr.com

Website: <http://www.stablesolutionsfarm.com/>

Descriptor: Social Worker, Certified Path Riding Instructor providing small groups and individual sessions. Horsemanship program teaching about horses and riding. Building social skills, emotional regulation, teamwork, relationship skills, confidence and leadership.

THRIVE CAMP

Population Served: AUT, MD, OHI, TBI, ID, SLD, S/LI, OH

Dates: Call for information

Ages: 5-18

Fee: Call for information

Organization: Therapy and Wellness Connection

Contact: Jaclyn McClymont or Mackenzie Millward

Address: 10010 Brecksville Rd Brecksville, OH 44141

Phone: 330-748-4807 **Fax:** 330-266-7513

Email: thrivecentertwc@gmail.com

Website: therapyandwellnessconnection.com

Descriptor: Children of all ages and abilities are welcome at our inclusive, therapist-led Thrive Summer Camp. Fun weekly themes and regular field trips keep kids engaged and offer ample opportunity to play, move, explore, create and connect. Campers with special needs will have the benefit of therapist supervision/ involvement to promote greater generalization of therapy goals like improved communication, independence and appropriate behavior.

Thrive Summer Camp offers unique benefits like:

- Minimum two therapists from multiple disciplines always present
- High therapist-to-student ratios (ensuring children are safe and get the most from the experience)
- Real-world outings (horse farms, zoos, science centers, Cleveland Metroparks, etc.)
- Opportunities for inclusion of typically-developing siblings, friends, relatives - and anyone else who wants to be a part of this popular program!
- Sibling and family-member volunteer helpers

Thrive Summer Camp is a special chance for all children to experience new things, make a few friends, learn critical skills in real-world settings and hopefully glean some lifelong fond memories.



Art and Therapeutic Programs

WESTERN RESERVE SPEECH & LANGUAGE PARTNERS (W.R.S.L.P.)

Population Served: ADD, ADHD, AUT, SLD, S/LI, PDD

Dates: Ongoing, weekly programs/individual therapy

Ages: 18 months – 18 years

Fee: Varies

Organization: Western Reserve Speech & Language Partners

Contact: Nancy Theofrastous

Address: 100 7th Ave., Suite 255, Chardon, OH 44024

Phone: 440-285-0775 **Fax:** 440-285-2091

Email: ntheo@wrsllc.com

Website: <https://milestones.org/resource/western-reserve-speech-language-partners/>

Descriptor: For more information regarding support, advocacy and general information call contact.

ZEN AND THE ARTS CAMP FOR ALL KIDS

Population Served: AUT, HI, ID, OI, OHI, SLD, S/LI, TBI, VI, ADHD, ASD, LD

Dates: Call for further information

Ages: 6 – 12

Fee: Call for further information

Organization: Insight Learning & Wellness Center, LLC

Contact: Michelle Martin, E.Ds.

Address: 25901 Emery Rd; Ste. 112; Warrensville Hts.; OH 44128

Phone: 216-765-4470

Email: mmartin@insight-wellness.com

Website: www.insight-wellness.com

Descriptor: Get the most for your child – Physical & Mental Strength – non-competitive, with a main focus of building friendships, confidence and self-control.

Zen Arts Camp will help your child build RESILIENCE with yoga, mindfulness, energy psychology, nature, art and also healthy habits for eating and thinking. Small class size, behavior modification built in, social skills curriculum, special teaching methods to improve feelings of success. Our campers learn Tae Kwon Do for solid strength and achieve more “Zen” with research-backed methods such as “tapping” acupressure points and specific breathing techniques.

Added Bonus! Campers also have Anti-bullying Lessons, visual arts lessons and a wildly popular “River Nature Day”. Daily themes such as “friendship,” “leadership,” “gratitude” and “honesty” are woven into camp lessons to help children learn concentration, problem-solving skills improving their school performance.

DAY CAMP PROGRAMS





Day Camp Programs

ABC'S DAY PROGRAM

Population Served: VI, other disability with vision impairment or blindness

Dates: July 13 - August 6, 2020; Monday - Thursday

Ages: 6-9 years

Fee: \$500.00

Organization: Cleveland Sight Center

Contact: Sylvia Snyder

Address: 1909 E. 101st Street, Cleveland, OH 44106

Phone: 216-658-8777 Fax: 216-795-5132

Email: ssnyder@clevelandsightcenter.org

Website: <http://www.clevelandsightcenter.org/>

Descriptor: ABCs is a half day summer camp program for children entering grades kindergarten through 3 with primary or secondary vision impairments. The program includes academic activities, outdoor play, therapies, socialization activities and fun. Compensatory skills, such as Braille, orientation & mobility, and daily living skills are emphasized. Camp is staffed by a team including a Licensed Teacher, Teacher of the Visually Impaired, Occupational Therapist, Physical Therapist, Speech Pathologist and Orientation & Mobility Instructor. May serve as ESY option.





Day Camp Programs

ADAPTIVE SPORTS OHIO DREAM CAMP 2020

Population Served: VI, OI

Dates: View our website for information

Ages: 7-18

Fee: Call for information

Organization: Adaptive Sports Program of Ohio

Contact: Dilshani Madawala

Address: 100 Kurzen Road N, Suite B; Dalton, OH 44618
555 N. Meridian Road; Youngstown, OH 44509

Phone: 330-985-0085

Email: dilshani.madawala@adaptivesportsohio.org

Website: AdaptiveSportsOhio.org

Descriptor: This 2 days camp is open to any youth with a physical disability. ASPO's goal at this camp is to provide adaptive sport opportunities, build community and relationship with other youth with disabilities while enjoying the camp experience at Recreation Unlimited in Ashley Ohio.

AKRON ROTARY CAMP FOR CHILDREN WITH SPECIAL NEEDS

Population Served: AUT, ED, MD, HI, OHI, TBI, ID, SLD, VI, OI, S/LI

Dates: Call for information

Ages: 6-22 Years

Fee: Call for pricing

Organization: Akron Rotary Camp for Children with Special Needs/Akron Area YMCA

Contact: Dan Reynolds

Address: 4460 Rex Lake Drive, Akron, OH 44319

Phone: 330-644-4512 ext.3200 **Fax:** 330-644-1013

Email: danr@akronymca.org

Website: www.gotcamp.org

Descriptor: Rotary Camp for Children with Special Needs offers summer camps in Summit and Portage counties for children and adults with mental health disorders, physical and developmental disabilities. Rotary Camp is also offering an ESY program called Day Camp+ at our Summit County Location. Specific program dates and fees are available at www.gotcamp.org. Scholarships are available based on eligibility.



Day Camp Programs

ASD FAMILY CAMP

Population Served: AUT

Dates: May 31, 2020

Ages: The ENTIRE Family!

Fee: There are no fees for this camp.

Organization: Recreation Unlimited

Contact: Michelle Higgins, Intake & Billing Coordinator; Chris Link, Operations Director

Address: 7700 Piper Road; Ashley, OH 43003-9741

Phone: 740-548-7006 **Fax:** 740-747-3139

Email: clink@recreationunlimited.org

Website: www.recreationunlimited.org

Descriptor: This day is designed for the entire family to be able to come out to camp and play together. Your family will have the opportunity to do camp activities such as swimming, fishing, canoeing, climbing, sports, archery, creekin', nature exploration, arts and crafts, and more!

BELIEVERS ACADEMY SUMMER ENRICHMENT PROGRAM

Population Served: AUT, ED, ID, MD, SLD

Dates: Call for further information

Ages: 6 – 17 years

Fee: Call for information; FEE INCLUDES: Transportation, admission cost, lunch and snacks

Organization: Believers Academy Dreams Inc.

Contact: Nicole Kaiser

Address: 3100 E. 45th Street; Suite 116; Cleveland, OH 44127

Phone: 216-441-4100

Email: nkaiser@msn.com

Website: www.believersacademyprogram.com

Descriptor: Believers Academy Summer Enrichment Program is a program that all youths will have lots of summer fun. Youths are surrounded by positive supervision, support and safe environments where they are guided with opportunities to learn and grow. Our program provides hands on experiences that empower youths through clear expectations and opportunities where they can learn new skills, meet new people, set healthy boundaries and enjoy traditional summer fun. Some of the activities your child will experience are: canoeing, go carts, batting cages, roller skating, zoo, fun-n-stuff, cook-outs at the beach, swings-n-things and many more activities. Our staff will role model values each and every day and incorporate standards and character development into all aspects of the program.



Day Camp Programs

BEYOND CAMP

Population Served: AUT

Dates: July 6– July 31, 2020

Ages: Elementary school

Fee: \$3000.00

Organization: Julie Billiard Schools

Contact: Danna Avsec

Address: 4982 Clubside Rd.; Lyndhurst, OH 44124

Phone: 216-691-8916 ext. 160

Email: davsec@jbschool.org

Website: www.juliebilliardartschool.org/beyondcamp

Descriptor: Beyond Camp is an award winning summer option for children in grades K-8 (ages 5-14) with special learning needs.

BRIGHT FUTURES SUMMER DAY PROGRAM

Population Served: VI, other disability with vision impairment or blindness

Dates: June 15, - July 9, 2020; Monday - Thursday

Ages: 3 - 5 years

Fee: \$500.00

Organization: Cleveland Sight Center

Contact: Sylvia Snyder

Address: 1909 E. 101st Street; Cleveland, OH 44106

Phone: 216-658-8777 Fax: 216-795-5132

Email: ssnyder@clevelandsightcenter.org

Website: <http://www.clevelandsightcenter.org/>

Descriptor: Bright Futures is a half day summer camp program for preschool aged children with primary or secondary vision impairments. The program includes pre-academic activities, outdoor play, therapies, socialization activities and fun. Compensatory skills, such as pre-Braille, pre-mobility, and daily living skills are emphasized. Camp is staffed by a team including a Pre-school Teacher, Teacher of the Visually Impaired, Occupational Therapist, Physical Therapist, Speech Pathologist and Orientation & Mobility Instructor. May serve as ESY option.



CAMP INSIGHT – SPECIAL EDITION

Population Served: AUT, HI, ID, OI, OHI, SLD, S/LI, TBI, VI

Dates: Call for information

Ages: 6-12 years

Fee: Call for information

Organization: Insight Learning & Wellness Center

Contact: Michelle Martin, E.Ds.

Address: 25901 Emery Rd.; Ste. 112; Warrensville Hts.; OH 44128

Phone: 216-765-4470 **Fax:** 216-765-4471

Email: mmartin@insight-wellness.com

Website: www.insight-wellness.com

Descriptor: Camp Insight – Special Edition is open to high functioning children ages 6 to 12 years with special needs. *Camp Insight* Special Edition helps children build their “Self-Regulation Muscles” and “Friendship Skills” using methods backed by leading brain science research. It is NON-competitive, with a main focus of building FRIENDSHIPS, FOCUS and SELF CONTROL.

Developed and staffed by professional from: School Psychology, Occupational Therapy and Classroom Teachers with special needs training/experience. Camp Insight offers unique holistic activities: Yoga, Dance, Mindfulness, Brain Gym, Tae Kwon Do, Art, nature, Cooking/Nutrition Classes (yes-trying new healthy foods), Tapping EFT and other Energy Psychology exercises to build stronger bodies and minds.

Self-Regulation exercises are built into each day and there is a strong Social Skill Component. Instructors utilize a behavior modification system, special teaching methods, and a “Required (6) hour Parent Training Component.” In addition to exercises that increase physical strength, stamina and flexibility, campers are inspired to be creative, peaceful and empathetic towards others, while exploring productive conflict resolution and gaining tools to alleviate stress. You and your child have a system of tools to take with you when you leave.



Day Camp Programs

CAMP PARADISE

Population Served: AUT, ED, MD, HI, OHI, TBI, ID, SLD, VI, OI, S/LI

Dates: Sports Week – June 15 – 19, 2020

Carnival – June 22 – 26, 2020

Holidaze – July 6 – 10, 2020

Animal Planet – July 13 – 17, 2020

Carnival – July 20 – 24, 2020

Ages: Call for information

Fee: Call for Information

Organization: Society for Handicapped Citizens of Medina County (The Society)

Contact: Joan Long, 330-722-1900

Address: 4283 Paradise Road; Seville, OH 44273

Phone: 330-722-1900 Toll Free: 1-877-546-8568

Email: jlong@shc-medina.org

Website: www.Shc-medina.org/camp-paradise/

Descriptor: Camp Paradise offers five weeks of themed summer camp for adults with developmental disabilities during the summer months. Both day and residential camp is available. Campers enjoy swimming, crafts, indoor and outdoor games and theme related activities.

CAMP SBC BY SOLUTIONS BEHAVIORAL CONSULTING

Population Served: AUT, ED, MD, ID, S/LI

Dates: June through July, 2020

Ages: 5-12 years

Fee: Call for Information

Organization: Solutions Behavioral Consulting

Contact: Ashley Madonio

Address: Macedonia Recreation Center; 1494 East Aurora Road; Macedonia, OH 44056

Phone: 330-888-9596

Email: amadonio@solutionsbehavioral.com

Website: www.solutionsbehavioral.com

Descriptor: We serve students with Individualized Education Plans (IEPs) within a summer recreational setting. SBC Camp is a 5 week integrated camp within Camp Macedonia, offering services to children with Autism Spectrum Disorders and other developmental disorders. Each camper is provided 1:1 or 1:2 assistance to facilitate interactions and instruction throughout the day. Camp is structured to provide researched-based programming utilizing behaviorally-based techniques in an inclusion setting. It provides campers with full inclusion opportunities in an environment that allows for structured social skills activities as well as academics and other education goals as specified in each individual's IEP.



Day Camp Programs



CAREER EXPLORATION

Population Served: VI

Dates: July 27 – August 7, 2020

Ages: 14 - 17 years

Fee: Consult OOD/BSVI or call Cleveland Sight Center

Organization: Cleveland Sight Center

Contact: Sylvia Snyder

Address: 1909 E. 101st Street; Cleveland, OH 44106

Phone: 216-658-8777 **Fax:** 216-795-5132

Email: ssnyder@clevelandsightcenter.org

Website: <http://www.clevelandsightcenter.org/>

Descriptor: Career Exploration is a 2 week program designed to give young teens an opportunity to investigate jobs and work sites in the Cleveland area. Participants are provided with daily community field trips to expand their knowledge of employment options and training needed to prepare for them. Instruction in soft skills including communication and team work are incorporated.



Day Camp Programs

CATHOLIC CHARITIES CAMP HAPPINESS

Population Served: AUT, MD, ID

Dates: June 22 - July 31, 2020

Ages: 5-21

Fee: \$350/week

Organization: Catholic Charities Disability Services

Contact: Lauren Mailey

Address: 7911 Detroit Ave.; Cleveland, OH 44102

Phone: 216-334-2963 **Fax:** 216-334-2905

Email: lmmailey@ccdogle.org

Website: www.ccdogle.org/disability

Descriptor: Camp Happiness has 2 locations (Parma & Wickliffe). We offer social and recreational activities, as well as skill enhancement, as appropriate, to children and young adults with disabilities. Participants also go on community field trips and may go swimming! The summer program serves persons with cognitive disabilities, as well as individuals with multiple disabilities. Participants are individually assessed to determine appropriateness.

We fulfill our mission by accomplishing special goals, such as extending and complimenting the educational experiences provided to participants throughout their school year and providing respite to primary caregivers.

Waivers are accepted. Transportation may be provided for Cuyahoga County residents.





Day Camp Programs

CHEERFUL DAY CAMP

Population Served: AUT, MD, HI, OHI, TBI, ID, OI, S/LI

Dates: June 8 - August 7, 2020

Ages: 5 (school eligible) through school age

Fee: Contact for fee information

Organization: Camp Cheerful

Contact: Alissa Piwinski, Manager of Camp Programs

Address: 15000 Cheerful Lane, Strongsville, Ohio 44136

Phone: 440-238-6200 **Fax:** 440-238-1858

Email: campcheerful@achievementctr.org

Website: <http://www.campcheerful.achievementcenters.org>

Descriptor: Recreational day camp program for children with and without special needs. Our day camps offer traditional camp activities including daily swimming, talent shows, arts and crafts, nature and sensory activities, adapted sports, games, reading activities, fun with musical instruments, visits from local police and fire departments. Cheerful Day Camp also offers canoeing, horsemanship activities, and fishing. A maximum ration of 1 staff to 4 children. 1:1 aides are limited for an additional cost. Financial assistance may be available for families who qualify. Camp Cheerful is an IO, Level 1, and SELF Waiver service provider.

CIRCLE OF FRIENDSHIP

Population Served: AUT, ED, MD, ID

Dates: June – August, 8 a.m. - 5 p.m. Monday – Friday; 10 Weeks

Ages: 6 years old through 16 years old

Fee: Call for prices, other funding sources are accepted. Can attend one or all weeks (minimum is 4 weeks)

Organization: Inner-Circle Communities

Contact: Antonio Travis, Executive Director

Address: 5451 Broadview Road; Suite 1; Parma, Ohio 44134

Phone: 440-606-6231 (Office); 614-517-6272 (On-Call) **Fax:** 254-453-2514

Email: info@ICCommunities.org

Website: www.ICCommunities.org

Descriptor: A day camp program of Inner Circle Communities, that offers summer enrichment opportunities for children ages 6-16 years old. We provide an opportunity for families to relax and have fun in a safe environment. This therapeutic camp offers activities that will aid in holistically developing each child socially, mentally and physically. Each youth's needs are customized and integrated into the daily activities. To ensure the safety of your children the ratio of children to camp staff ranges from 1:1 to 1:6 depending on the individual needs. All camp staff are trained and qualified to deliver adequate services in a supportive environment and will have a minimum of 2 years of experience working with children in a learning environment.



Day Camp Programs

EXPRESS FOR SUCCESS

Population Served: AUT, ID, OI, SLD, S/LI

Dates: Call for information

Ages: 8-12 years

Fee: Call for information

Organization: Insight Learning & Wellness Center

Contact: Michelle Martin, E.Ds.

Address: 25901 Emery Rd.; Ste. 112; Warrensville Hts., OH 44128

Phone: 216-765-4470 **Fax:** 216-765-4471

Email: ilcmartin@sbcglobal.net

Website: www.insight-wellness.com

Descriptor: Participate in fun, drama, movement, music and art activities while building skills in such areas as cooperation, concentration, stress and anger management and clear communication.

Get to know other campers by sharing ideas and experiences related to a theme. These discussions will be turned into ideas for simple scenes, songs, music, movement pieces and art work which will be pulled together to create a short performance. Delight in the applause as friends and family acknowledge your ideas, abilities and hard work.

HELP FOUNDATION INC. SUMMER PROGRAM

Population Served: AUT, ED, MD, HI, OHI, TBI, ID, SLD, VI, OI, S/L

Dates: June 9 - July 17, 2020

Ages: 3-21 years

Fee: Camp fee is \$840; ESY \$2400

Organization: HELP Foundation Inc.

Contact: Allison Briskey

Address: 26900 Euclid Ave.; Euclid, Ohio 44132

Phone: 216-870-1801 **Fax:** 216-361-2608

Email: abriskey@helpfoundationinc.org

Website: helpfoundationinc.org/summer-program/

Descriptor: HELP offers a six week extended school year and camp experience to children of all abilities ages 3 to 21 years. We offer convenient east side and west side locations and work very close with the child's school district to ensure an effective learning link throughout the summer break. HELP also works with CCBDD's Campership and NEON programs to assist families with funding options for camp. Please call 216-870-1801 for more information!



Day Camp Programs

IN-N-OUT OF THE CITY SUMMER CAMP

Population Served: AUT, ED, ID, MD, OHI, SLD

Dates: Call for information

Ages: 6 – 14 years

Fee: Call for information

Organization: Education Alternatives

Contact: Eric Hibinger

Address: 7777 Exchange Street; #4; Valley View, OH 44125

Phone: 216-332-9360, ext. 1233

Email: enrollment@easchools.org

Website: <http://www.easchools.org/>

Descriptor: Summer program designed to serve the needs of children with emotional and/or behavior disabilities, as well as a specialized program within the camp for youth with autism and/or cognitive disabilities. Participants enjoy various activities that promote teamwork and social development in a safe, therapeutic environment.





Day Camp Programs

JONI AND FRIENDS SHAWNEE FAMILY RETREATS

Population Served: AUT, ED, MD, HI, OHI, TBI, ID, SLD, VI, OI, S/LI, All Disabilities are accepted

Dates: June 22-26, 2020 and July 13-17, 2020

Ages: All Ages are accepted

Fee: Fee depends upon number of family members planning to attend.

Organization: Joni and Friends

Contact: Joel Montgomery - Program Manager

Address: 1181 Noe Bixby Rd.; Columbus, OH 43213

Phone: 614-861-8920.

Email: jmontgomery@joniandfriends.org

Website: www.joniandfriends.org

Descriptor: Join Joni and Friends Ohio at Shawnee State Park Lodge and Resort for a five-day adventure! The Shawnee Family Retreat lies in the tranquil, rolling hills of Southern Ohio; it sets the stage for a peaceful yet refreshing week for families affected by disability. Throughout the week families and volunteers will come together to enjoy a week of rest, rejuvenation, and the making of memories that will last a lifetime. Every family member will have the opportunity to enjoy handicap accessible swimming pools, adapted motorcycle rides, a miniature golf course, and more! Best of all, everyone will learn about the hope found in Jesus Christ while connecting with families who understand the challenges of life with disability. We look forward to seeing YOU there!

KRAZY KAMP

Population Served: HI, TBI, VI, OI

Dates: Summer: Week-long camp or 1-day per week for 6-7 weeks. During the school year: one Saturday each month.

Ages: 4 – 8 years

Fee: None. Suggested donation based on frequency of attendance.

Organization: Youth Challenge

Contact: Mackenzie Vecchio

Address: 800 Sharon Drive Youth Challenge

Phone: 440-892-1001 **Fax:** 440-892-1004

Email: mvecchio@youthchallengesports.com

Website: <http://www.youthchallengesports.com/>

Descriptor: A shorter day for our youngest kids, but no skimping on the fun! Being part of a team benefits everyone! YC offers Krazy Kamp adaptive sports and recreation for children with physical disabilities. Swimming, sports, arts, field trips all over Greater Cleveland. YC staff are certified disability sports specialists and experts in adapting activities for maximum engagement. YC staff are also equipped to handle personal care needs. All YC participants are paired with a teen volunteer to provide assistance and friendship.



Day Camp Programs

LAKE SHORE DAY CAMP

Population Served: AUT, HI, ID, MD, OI, OHI, SLD, S/LI,

Dates: TBA 6 weeks, June - July

Ages: Preschool – 18 years

Fee: Call for information

Organization: Lake Shore Day Camp

Contact: Dan Jennings

Address: Dover Intermediate School; 2240 Dover Center Rd.; Westlake, OH 44145

Phone: 216-219-1618

Email: dan.jennings@lakeshoredaycamp.org; lakeshoredaycamp@gmail.com

Website: www.lakeshoredaycamp.org

Descriptor: We offer a program for continued growth of the child's overall development during the summer months with emphasis on working and playing together, reinforcing academics from your child's IEP, developing a sense of responsibility and developing a positive self-concept, all in a camp-like setting. There is daily swimming during the summer session and year-round social activities.

LIFE STEPS

Population Served: AUT, ED, MD, HI, OHI, TBI, ID, SLD, VI, OI, S/LI

Dates: Call for information

Ages: 8 years old and up

Fee: Call for information

Organization: Medina Creative Housing

Contact: Sharon Biggins

Address: 5200 Lake Rd; Medina, Ohio 44256

Phone: 330-591-4434 Fax: 330-723-7415

Email: Sharon@medinacreativeliving.com

Website: www.medinacreativehousing.com

Descriptor: We offer 11 weeks of summer day camp this year. Our camp runs from 8am-4pm Monday through Friday. Life Steps is an educational camp with a therapeutic component. Participants will work on life skills, crafts, games, field trips, and participate in martial arts and therapeutic horseback riding at Medina Creative Therapy Ranch.



Day Camp Programs

MIDDLEBURG EARLY EDUCATION CENTER SUMMER SPEECH CAMP

Population Served: AUT, MD, HI, OHI, TBI, ID, SLD, S/LI

Dates: Call for information

Ages: 18 months up to Kindergarten entry

Fee: Call for information

Organization: Middleburg Early Education Center

Contact: Christie Scott

Address: 7171 Pearl Road; Middleburg Heights, OH 44130

Phone: 440-888-9922 **Fax:** 440-843-6664

Email: christieatmeec@yahoo.com

Website: www.meec.us

Descriptor: Summer Speech Camp is fun preschool programming for children with communication delays. Children attend either Mondays, Wednesdays and Fridays or Tuesdays and Thursdays. Sessions are from 8:30 - 10:30 and 11:00 - 1:00. Children receive 30 minutes of speech therapy each week. The program is designed to help children with special needs maintain the skills they have gained during the school year. Student to staff ratio is 3:1.





Day Camp Programs

NEW AVENUES SUMMER CAMP

Population Served: AUT, MD, OHI, ID, OI, S/LI

Dates: June 22-July 24, 2020

Ages: 3-22 years

Fee: \$1,375 (Lake County Resident), \$1,575 (Out of Lake County Resident)

Organization: New Avenues to Independence

Contact: Cheryl General

Address: 8090 Broadmoor Rd., Mentor, Ohio 44060

Phone: 216-701-4577 **Fax:** 440-602-1003

Email: cgeneral@newavenues.net

Website: www.newavenues.net

Descriptor: New Avenues Summer Camp is an Extended School Year/Recreational program for children with special needs ages 3-22. It is held for 5 weeks during the summer at Broadmoor School in Mentor, Ohio. Activities include: Swimming, Arts & Crafts, Music Therapy, Cooking/Food Fun, Adaptive Physical Education, Outside Play/Walks, Special Events, & Working on Individual I.E.P. Goals. Speech, Occupational, & Physical Therapies are also available at an additional charge.

PASS (PERFORMING ARTS CAMP & SOCIAL SKILLS) CAMP @ BEYOND WORDS

Population Served: AUT, ED, MD, HI, OHI, TBI, ID, SLD, VI, OI, S/LI

Dates: One-week camp, 3 hours per day. Check website for camp dates, times and location.

Ages: 2-4, 5-8 (East/West)

5-8, 9-13, 14-18 (Central/South)

Fee: Please visit our website for fee information

Organization: Beyond Words: Music & Dance Center

Contact: Erin Jester, MT-BC, Director/Owner

Address: Central: Beyond Words, North Royalton

South: Beyond Words, Medina

East: Building Blocks Therapy, Highland Heights

West: Building Blocks Therapy, Avon

Phone: 440-230-6100

Email: erin.jester@beyondwordscenter.org

Website: <http://www.beyondwordscenter.org>

Descriptor: Led by a Board Certified Music Therapist, PASS Camp offers children a chance to engage together socially through structured musical experiences including: songwriting, dancing, instrument ensembles and drama activities. Each week, a different musical project will be developed and completed. Campers will be organized into groups based on age and ability/needs and will engage in fine arts experiences with social skill opportunities.



Day Camp Programs



SENSATIONAL DAY PROGRAM

Population Served: AUT

Dates: June 15 - Aug 7, 2020

Ages: 5 through 21 years

Fee: Call for fee information

Organization: Camp Cheerful

Contact: Alissa Piwinski, Manager of Camp Programs

Address: 15000 Cheerful Lane; Strongsville, OH 44136

Phone: 440-238-6200 ext. 224 **Fax:** 440-238-1858

Email: campcheerful@achievementctrs.org

Website: www.campcheerful.achievementcenters.org

Descriptor: A mix of camp and school activities for school-age children and teens with disabilities, including autism spectrum disorder (ASD). This program is designed and run by an Intervention Specialist that works with campers on IEP goals in a maximum 1 staff to 3 camper setting. Activities are designed to meet each student's needs and ability level while receiving support from an intervention specialist and counselors. Speech-language pathologists and occupational therapists also provide required therapy minutes in student's IEP. Activities include daily swimming, sensory play and exploration, arts and crafts, adapted sports activities, reading, and music activities. A \$35 non-refundable application fee must accompany the application.



Day Camp Programs

SUMMER TREATMENT PROGRAM

Population Served: OHI

Dates: June 15- July 31, 2020

Ages: 6-14 years old

Fee: \$5100 out of pocket (i.e. not billable to insurance). We accept PASSS funding for children who are adopted, Autism Scholarship/Jon Peterson Scholarship, Extended School Year service funds, and a Cleveland Clinic scholarship is available for application upon acceptance.

Organization: Cleveland Clinic Children's

Contact: Eric Geyer or Ralph D'Alessio at 216-444-0075

Address: 2801 Martin Luther King Jr. Drive, Cleveland, OH 44106

Program held on campus of Notre Dame College: 4545 College Rd., South Euclid, OH, 44121

Phone: 216-444-0075 **Fax:** 216-448-6087

Email: geyere@ccf.org

Website: www.clevelandclinic.org/stp

Descriptor: The Summer Treatment Program provides evidence-based behavioral treatment in a day-camp setting designed to empower children and adolescents with ADHD and their families to manage symptoms throughout the year and to improve behavioral, social, and academic functioning. Each child is provided with an individualized treatment plan and receives behavior modification treatment in a group of 10-12 peers. The structured daily schedule includes participation in sports activities, classroom settings, social skills training, and other group-based activities. Parents participate in weekly parent training sessions to learn skills that can assist their children in generalizing gains made during the summer to their home and school settings. Parent booster sessions are also held on a monthly basis throughout the following year.

RESIDENTIAL CAMP PROGRAMS





Residential Camp Programs

AKRON ROTARY CAMP FOR CHILDREN WITH SPECIAL NEEDS

Population Served: AUT, ED, MD, HI, OHI, TBI, ID, SLD, VI, OI, S/LI

Dates: See website for information

Ages: Resident Camp-6-17 years, Adult Camp- 18 years +

Fee: Call for pricing

Organization: Akron Rotary Camp for Children with Special Needs

Contact: Dan Reynolds

Address: 4460 Rex Lake Drive; Akron, Ohio

Phone: 330-644-4512 **Fax:** 330-644-1013

Email: danr@akronymca.org

Website: <http://www.gotcamp.org>

Descriptor: Rotary Camp for Children with Special Needs offer summer overnight camps in Summit County for children and adults with mental health disorders, physical and developmental disabilities. Rotary Camp offers and ESY program called Day Camp+ at our Summit County location. Campers do not need to reside in any specific county to participate. Specific program dates and fess are provided at www.gotcamp.org. Scholarships are available based on eligibility.

AUTISM CAMPS

Population Served: AUT

Dates: May 29 - 31, 2020 for youth Ages 8-18 with Autism (ASD) (Pick up 8am - 9am because of Family Day).
August 14 - 16, 2020 (PENDING) for families with a child with Autism (ASD) at least 1 parent/guardian must attend.

Ages: 8-22

Fee: Recreation Unlimited is working to raise money in order to make this camp free for families.
Please call 740-548-7006 for details.

Organization: Recreation Unlimited

Contact: Michelle Higgins, Intake & Billing Coordinator; Chris Link, Operations Director

Address: 7700 Piper Road; Ashley, OH 43003-9741

Phone: 740-548-7006 **Fax:** 740-747-3139

Email: clink@recreationunlimited.org

Website: www.recreationunlimited.org

Descriptor: Autism Camps provide a full schedule of activities, lodging, meals and snacks, counselors, program leaders, on-site nursing and a great environment for indoor and outdoor fun! Examples of program activities include swimming, fishing, canoeing, climbing, sports, archery, creekin', nature exploration, arts and crafts, cooking, theater, campfire, dancing and more.



Residential Camp Programs

CAMP CHAI

Population Served: AUT, HI, ID, SLD, S/LI,

Dates: Call for information

Ages: 18 years and older

Fee: Call for information

Organization: Camp Wise – Part of the Mandel Jewish Community Center

Contact: Erin Witschey

Address: 26001 S. Woodland Road; Beachwood, OH 44122

Phone: 216-593-6250

Email: ewitschey@mandeljcc.org

Website: www.mandeljcc.org

Descriptor: Camp Chai is a week of camp life for adults with developmental disabilities. Spend a week at camp swimming, boating, relaxing, doing arts and crafts, dancing, climbing, and a whole lot more! Held at beautiful Camp Wise in Chardon, Ohio, our facility offers rustic cabins, a low camper to staff ratio, and kosher meals.

CAMP CHEERFUL OVERNIGHT CAMP

Population Served: AUT, MD, HI, OHI, TBI, ID, VI, OI, S/LI

Dates: June 14 - August 9, 2020

Ages: 7 years and older, including adults

Fee: Contact for fee information

Organization: Camp Cheerful

Contact: Alissa Piwinski, Manager of Camp Programs

Address: 15000 Cheerful Lane, Strongsville, OH 44136

Phone: 440-238-6200 ext. 224 **Fax:** 440-238-1858

Email: campcheerful@achievementctrs.org

Website: www.campcheerful.achievementcenters.org

Descriptor: Overnight camp for children with and without disabilities, and adults with special needs. Daily activities are spent with cabin mates and consist of swimming, canoeing, arts and crafts, reading activities, fun with musical instruments, nature and sensory activities, horsemanship activities, fishing, Frisbee golf, and adapted sports. Special evening activities are held throughout the week for all campers and may include a pool party, dance, talent show, or campfire. Most sessions are 6 days/5 nights, with the ability to sign up for one 10-day session. Maximum ratio of 1 staff to 4 campers. 1:1 aides are not available.



Residential Camp Programs

CAMP ECHOING HILLS

Population Served: AUT, ED, MD, HI, OHI, TBI, ID, SLD, VI, OI, S/LI, All levels of Disabilities/Medical Needs

Dates: Various camps from June 21 – August 2, 2020

Ages: We accept campers beginning with ages 7 all the way up to campers in their 80's. Our camp weeks are split up based on age.

Fee: Call for information

Organization: Echoing Hills Village Inc.

Contact: Lauren Unger - Camp Administrator or Emily Smith - Program Director

Address: Camp Echoing Hills; 36272 County Road 79; Warsaw, Ohio 43844

Phone: 740-327-0300

Email: esmith@ehvi.org

Website: www.ehvi.org www.facebook.com/campechoinghills

Descriptor: Camp Echoing Hills is a Christian Special Needs camp that serves Individuals with Special Needs starting at ages 7 through those in their 80's. We will be celebrating our 53rd summer in 2020 and nearly 95% return rate of campers each summer. We strive to provide the best quality care and service to meet the needs of each camper, while helping them feel accepted just the way they are. It's always a goal of ours to have campers building relationships and hopefully create friends!





Residential Camp Programs

CAMP KODIAK

Population Served: AUT, SLD

Dates: June 28 -July 25, 2020 -- Session 1 (4 weeks)

July 26 - August 15, 2020 -- Session 2 (3 weeks)

June 28 - August 15, 2020 -- Full Summer (7 weeks)

Ages: Camp Kodiak 6 - 18 years old;

Fee: (Prices are in Canadian dollars, and are also subject to Harmonized Sales Tax (HST))

Session 1: \$6,175

Session 2: 17 \$4,990

Session 3: \$10,185

Organization: Camp Kodiak

Contact: Ilana Stoch

Address: Summer Camp:

200 Kodiak Road; McKellar, Ontario P0G 1C0, Canada

Winter Office:

4069 Pheasant Run; Mississauga, Ontario L5L 2C2, Canada

Phone: Year-Round Toll-Free 1-877-569-7595 **Fax:** 905-569-6045

Email: info@campkodiak.com

Website: www.campkodiak.com

Descriptor: Is your child ready for a summer of fun, friends, and success? Camp Kodiak is an integrated, non-competitive, overnight camp for children and teens with and without LD, ADHD and high-functioning ASD. Our program features over 50 sports & activities, a social skills program and an academic program. Our camp is staffed with teachers, social workers, child & youth workers, recreation specialists and university & college students. Our camper-to-staff ratio is 2:1 and our cabin groups are small. We build confidence and self-esteem by structuring all activities - athletic, artistic and social - to ensure success. Our comfortable log cabins have electricity and a full bathroom, including a shower. We are situated on a 425-acre site with 2 miles of waterfront. Airport service is provided. Your child deserves a great summer!



Residential Camp Programs

CAMP NUHOP SUMMER CAMP

Population Served: AUT, ED, MD, ID, S/LI

Dates: Session 1: June 14-19, 2020
Session 2: June 21-26, 2020
Session 3: June 28 - July 3, 2020
Session 4: July 12-17, 2020
Session 5: July 19-24, 2020
Session 6: July 26-31, 2020

Ages: 6-8 years, 8-18 years, 18+ years

Fee: Visit the website for pricing information

Organization: Camp Nuhop

Contact: Terri RuLon or Becca Mitchner

Address: 1077 Township Rd 2916; Perrysville, OH 44805

Phone: 419-938-7151

Email: Terri@nuhop.org or Becca@nuhop.org

Website: www.nuhop.org

Descriptor: Camp Nuhop is a week-long residential summer camp and respite program for children diagnosed with, but not limited to ADD-ADHD, higher functioning ASD and other delays or learning/behavioral differences. Camp Nuhop provides a structured environment where all campers have the opportunity to make friends and feel good about themselves

CAMP PARADISE

Population Served: AUT, ED, MD, HI, OHI, TBI, ID, SLD, VI, OI, S/LI

Dates: Sports Week – June 15 – 19, 2020
Carnival – June 22 – 26, 2020
Holidaze – July 6 – 10, 2020
Animal Planet – July 13 – 17, 2020
Carnival – July 20 – 24, 2020

Ages: Call for information

Fee: Call for Information

Organization: Society for Handicapped Citizens of Medina County (The Society)

Contact: Joan Long, 330-722-1900

Address: 4283 Paradise Road; Seville, OH 44273

Phone: 330-722-1900 Toll Free: 1-877-546-8568

Email: jlong@shc-medina.org

Website: www.Shc-medina.org/camp-paradise/

Descriptor: Camp Paradise offers five weeks of themed summer camp for adults with developmental disabilities during the summer months. Both day and residential camp is available. Campers enjoy swimming, crafts, indoor and outdoor games and theme related activities.



Residential Camp Programs

CAMP QUALITY OHIO

Population Served: Call for information

Dates: July 26 – August 1, 2020

Ages: 4 – 18 years

Fee: No cost

Organization: Camp Quality

Contact: Sarah Givens, Executive Director; Kelly Krebs, Camp Registrar

Address: PO Box 358; Uniontown, OH 44685

Phone: 330-620-6357

Email: Sarah.givens@campqualityusa.org; Kelly.Krebs@campqualityusa.org; ohio@campqualityusa.org

Website: <https://www.campqualityusa.org>

Descriptor: Camp Quality is a week-long camping experience and year round support system for children with cancer and their families. Each child is assigned a companion who provides support and encouragement during the week. They spend 24 hours a day together which usually results in friendships that last long after camp has ended.

CAMP WEKANDU ARTHRITIS SUMMER RESIDENT CAMP

Population Served: OH

Dates: Call for information

Ages: 1st grade (must have completed) – 12th grade

Fee: Call for information

Organization: Arthritis Foundation/Northeast Ohio Chapter

Contact: Kelly Case

Address: 4630 Richmond Road; Suite 240; Cleveland, OH 44128-5954

Phone: 513-636-4676

Email: kcase@arthritis.org

Website: www.arthritis.org

Descriptor: Scholarships available through Arthritis Foundation. Fee includes food, equipment, supplies, and insurance (subject to change). Camp is for individuals with juvenile arthritis and related illnesses.



Residential Camp Programs



CLUB KODIAK

Population Served: AUT, SLD

Dates: June 28 – July 25, 2020 (4 weeks)
June 28 - August 15, 2020 (7 weeks)
June 28 – August 29, 2020 (9 weeks)
July 26 - August 15, 2020 (3 weeks)
July 26 – August 29, 2020 (5 weeks)
August 16 – August 29, 2020 (2 weeks)

Ages: 19+

Fee: 4 weeks \$6,044 +HST+Trip Fees
7 weeks \$9,937 +HST+Trip Fees
9 weeks \$12,350 +HST+Trip Fees
3 weeks \$4,886 +HST+Trip Fees
5 weeks \$7,420 +HST+Trip Fees
2 weeks \$3,177 +HST+Trip Fees

Organization: Club Kodiak

Contact: Cassandra de Jager

Address: 1181 Pickerel & Jack Lake Road; Burk's Falls, ON P0A 1C0, Canada

Phone: Toll-Free: 1-877-569-7595 **Fax:** 905-569-6045

Email: info@clubkodiak.com

Website: <http://www.clubkodiak.com>

Descriptor: Club Kodiak is a summer program for young adults 19+ with ADHD, LD, and high-functioning ASD. We offer a unique vacation resort experience which includes sports, cultural activities, a social skills program and an in-depth life skills program. There are over 30 activities. On hot, sunny days, we cool off in the lake, and on other days, we are in the heated swimming pool. The entire group attends weekly out-of-camp excursions where the destination changes each week. We are staffed with teachers, social workers, child & youth workers and recreation specialists. We provide a 3:1 Guest-to-Staff ratio with 24-hour subtle supervision. Our facilities include comfortable, lakeside cottages that contain full bathroom facilities and a kitchen. Breakfast and lunch are prepared in the cottages and dinner is a large community event. Club Kodiak could be the next step for your young adult



HIGHBROOK LODGE RESIDENT CAMP

Population Served: VI, Multiple disabilities in addition to vision loss

Dates: Varies, June-August

Ages: 0 to 99

Fee: Fees vary. See website for more details.

Organization: Cleveland Sight Center

Contact: Jenny Schaeffer

Address: Business Address: 1909 E. 101st St.; Cleveland, OH 44106
Camp Address: 12944 Aquilla Rd.; Chardon, OH 44024

Phone: 216-791-8118

Email: jschaeffer@clevelandsightcenter.org

Website: <http://www.clevelandsightcenter.org/highbrook-lodge>

Descriptor: Since 1928, Highbrook Lodge has been providing a quality camp experience for children and adults with vision loss and blindness. For 90+ years, we've been utilizing the benefits of our natural environment to promote friendship, growth, independence and self-sufficiency through traditional camp activities adapted to the needs of our campers.

MUSCULAR DYSTROPHY ASSOCIATION SUMMER CAMP

Population Served: OHI

Dates: Depends on camp of your choice

Ages: Call for information

Fee: Call for information

Organization: MDA in Ohio

Contact: cleveland@mdausa.org

Address: 7010 Engle Road; # 100; Middleburg Heights, OH 44130

Phone: 440-816-0916

Email: cleveland@mdausa.org

Website: <https://www.mda.org/summer-camp>

Descriptor: When kids attend MDA Summer Camp, they gain independence as they spend time away from home and, more importantly, time away from their primary caregivers. They learn to accept personal care from someone other than their parents, form lifelong friendships, develop greater self-esteem and confidence, and get the chance to spend time with kids who have similar challenges.



Residential Camp Programs

OYO CAMP, OHIO'S CAMP FOR DEAF AND HARD OF HEARING KIDS

Population Served: HI

Dates: August 2-8, 2020 for ages 10 -18; August 5-8, 2020 for ages 7-9

Ages: 7 - 18

Fee: Call for information

Organization: OYO Camp, Ohio's Camp for Deaf and Hard of Hearing Kids

Contact: TJ Veppert

Address: Camp Address: Nuhop Center; 1077 Township Rd.; Suite 2916; Perrysville OH 44864

Administration: Advocates for Kids; 1500 W 3rd Ave Suite 223; Columbus OH 43212

Phone: office: 614-841-1991 (voice), 614-595-6065 (video phone) **Fax:** 614-841-4909

Email: oyocamp@dsc.org

Website: www.oyocamp.org

Descriptor: OYO Camp is a highly specialized program designed to meet the needs of campers whose hearing abilities range from moderate hearing loss to being profoundly deaf.

- Each camper's preferred method of communication is matched
- Over 100 campers attend annually





Residential Camp Programs

RECREATION UNLIMITED CAMPS, SUMMER RESIDENTIAL CAMPS

Population Served: AUT, HI, ID, MD, OI, OHI, S/LI, TBI, VI

Dates: Call for information

Ages: 8-22

Fee: Call for Information. Recreation Unlimited is an Individual Options Waiver, Level One Waiver, and Self Waiver provider, please contact your service coordinator and submit a request for service prior to coming to camp so that camp fees may be part of your service plan.

Organization: Recreation Unlimited

Contact: Michelle Higgins, Intake & Billing Coordinator; Chris Link, Operations Director

Address: 7700 Piper Road; Ashley, OH 43003-9741

Phone: 740-548-7006 **Fax:** 740-747-3139

Email: info@recreationunlimited.org

Website: www.recreationunlimited.org

Descriptor: Recreation Unlimited's Summer Residential Camps provide a full schedule of activities, lodging, meals and snacks, counselors, program leaders, on-site nursing and a great environment for fun! Examples of program activities during the summer are swimming, fishing, canoeing, climbing, sports, archery, creekin', nature exploration, arts and crafts, cooking, theater, campfire, dancing and more!

A fully equipped Health Services Center and Nurses Quarters with a team of nurses that administer all camper medications and medical treatments are provided. All meals and snacks are provided with healthy choices available. Special diets can be accommodated. Items such as Recreation Unlimited sweatshirts and t-shirts are available at the camp store for purchase that enables the campers to go home with a souvenir from camp.





SUMMER YOUTH WORK EXPERIENCE

Population Served: VI

Dates: June 14 - July 17, 2020

Ages: 16 – 20 years

Fee: Consult OOD/BSVI

Organization: Cleveland Sight Center

Contact: Sylvia Snyder

Address: 1909 E. 101 St.; Cleveland, OH 44106

Phone: 216-658-8777 **Fax:** 216-795-5132

Email: ssnyder@clevelandsightcenter.org

Website: <http://www.clevelandsightcenter.org/>

Descriptor: SYWE is a 5 week residential program designed to give young adults 20 hours per week of paid work experience supported by a job coach, instruction in the areas of technology, activities of daily living and orientation & mobility and a multitude of recreation opportunities in the greater Cleveland area. Participants reside in apartments located on campus. Program fees are authorized by Bureau of Services for the visually impaired.





TEMPLED HILLS CAMP – HAND IN HAND

Population Served: ID

Dates: July 5-9, 2020

Ages: 12 to adult

Fee: \$361 (\$346 before April 15)

Organization: Heartland Conference of the United Church of Christ, Templed Hills Camp

Contact: Jill Frey or Randy Gehres

Address: 5734 Durbin Road, Belleville, OH 44813

Phone: 800-282-0740

Email: jill@heartlanducc.org

Website: www.heartlanducc.org

Descriptor: Join in our Hand in Hand family as we learn to appreciate each other and our unique abilities, along with experiencing the best of church camp activities. Templed Hills Camp is a part of the Heartland Conference of the United Church of Christ. We offer a progressive Christian camp experience where all are extravagantly welcome. This year's Christian curriculum theme is "This is our prayer" and each day campers will experience a new prayer practice – a new way of communicating with God. We focus on classic camp activities: hiking, cookouts, crafts, nature activities, vespers, swimming, and more, all properly paced and full of fun and God's love. The best week of the year! Scholarships available based on need.



SOCIAL AND RECREATIONAL PROGRAMS





ACHIEVEMENT CENTERS FOR CHILDREN ADAPTED SPORTS

Population Served: AUT, HI, ID, VI, OI, S/LI

Dates: Football: May-July; Baseball: Aug-Sept; Soccer: Jan-March; Wheelchair Basketball: Oct-April

Ages: For co-ed youth 7 years and older

Fee: Varies by individual sport

Organization: Achievement Centers for Children

Contact: Mike Urban

Address: Community locations

Phone: 440-238-6200 ext. 245 **Fax:** 440-238-1858

Email: mike.urban@achievementctr.org

Website: campcheerful.achievementcenters.org

Descriptor: Adapted sports are competitive sports for individuals with disabilities. While the adapted sports often parallel existing sports played by able-bodied athletes, there may be some modifications in the equipment and rules to meet the needs of the participants.

In order to form competitive teams, disabilities are generally identified into broad groups such as physical, cognitive/developmental delays or both. This allows children to compete against players with their same skill level.

ACHILLES RUNNING CLUB

Population Served: AUT, ED, MD, HI, OHI, TBI, ID, SLD, VI, OI, S/LI

Dates: Every Sunday

Ages: All ages are welcome. Anyone under the age of 18 must be accompanied by an adult.

Fee: FREE-Individual race entry fees may apply

Organization: Achilles International Cleveland

Contact: Crystal Sledge, Cleveland Chapter President

Address: Headquarters: 42 West 38th Street Suite 400; New York, NY 10018

Phone: 216-240-9482

Email: achilles.clevelandoh@gmail.com

Website: www.achillesinternational.org

Descriptor: We believe anything is possible. Our mission is to enable people with disabilities to participate in mainstream athletics in order to promote personal achievement, enhance self-esteem and lower barriers to living a fulfilling life.



ADAPTED FITNESS AND YOGA PLUS LLC

Population Served: AUT, ED, MD, HI, OHI, TBI, ID, SLD, VI, OI, S/LI

Dates: Classes run January-June; please visit our Facebook page for specific class schedules.

Ages: 8 - adult

Fee: Adapted Aerobics -\$40 per six week session

Adapted Yoga-\$45 per six week session

Family Yoga-\$45 for students & \$25 each family member per six week session

Organization: Adapted Fitness and Yoga Plus LLC

Contact: Angela Siciliano CEO

Address: Dover Elementary School and Westlake High School; Westlake, OH

Phone: 440-773-5742

Email: Angelasd9@gmail.com

Website: Facebook Page Adapted Fitness and Yoga Plus; Twitter@adaptedfyp

Descriptor: We offer adapted fitness classes and more for individuals with disabilities and their families. We provide a comfortable, safe environment where all students are successful at their own level.

ADAPTIVE SPORTS AND ARTS

Population Served: MD, HI, TBI, VI, OI, S/LI

Dates: Year-round

Ages: 4 – 18 years

Fee: None. Suggested donation is based on frequency of attendance.

Organization: Youth Challenge

Contact: Mackenzie Vecchio, Program Manager and Athletics Coordinator

Address: Main Office: 800 Sharon Dr., Westlake, OH 44145

East Side Office: 19910 Malvern Road, Shaker Heights, OH 44120

Phone: 440-892-1001 **Fax:** 440-892-1004

Email: mvecchio@youthchallengesports.com

Website: www.youthchallengesports.com

Descriptor: Being part of a team benefits everyone! YC offers year-round adaptive sports and recreation for children with physical disabilities. From sled hockey and skiing, to rock climbing and soccer, we make sports happen. Our competition level is instructional and recreational, but we can specialize for those athletes and artists who show particular passion and enthusiasm for an activity. Our fully accessible facility in Westlake is equipped with a gym, fitness center, and maker space. YC staff are certified disability sports specialists and experts in adapting activities for maximum engagement. All YC participants are paired with a teen volunteer to provide assistance and friendship.



ADAPTIVE SPORTS PROGRAM OF OHIO

Population Served: VI, OI

Dates: Year-round

Ages: 4 years and up

Fee: Varies, financial hardships considered.

Organization: Adaptive Sports Program of Ohio

Contact: Lisa Followay, Executive Director

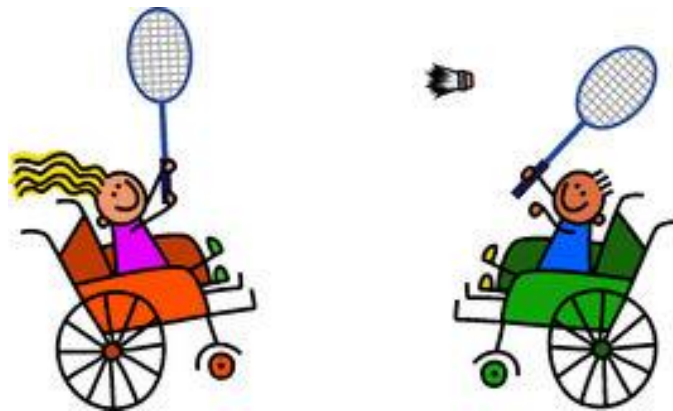
Address: 100 Kurzen Road N, Suite B; Dalton, OH 44618
555 N. Meridian Road; Youngstown, OH 44509

Phone: 330-985-0085

Email: info@adaptivesportsohio.org

Website: AdaptiveSportsOhio.org

Descriptor: The Adaptive Sports Program of Ohio is a non-profit 501(C) 3 offering recreational and competitive adaptive sports to individuals with physical disabilities across Ohio. Programs include wheelchair basketball, sled hockey, power wheelchair soccer, adaptive track and field and a multi-sport summer camp.





ADOLESCENT CAMP

Population Served: AUT, ED, MD, ID, S/LI

Dates: Call for information

Ages: 12 to 17 years

Fee: Call for Information

Organization: Solutions Behavioral Consulting

Contact: Ashley Madonio

Address: 5836 Crow Drive; Suite 240; Macedonia, OH 44056

Phone: 330-888-9596

Email: amadonio@solutionsbehavioral.com

Website: www.solutionsbehavioral.com

Descriptor: SBC is offering a social group for adolescents with autism spectrum disorder or related disabilities. Students will participate in customized social, recreational, and educational activities in various community settings. If applicable, sessions will include instruction in academics and other educational goals as designated by each student's individualized education plan. This group is ideal for individuals who are ready for inclusion activities and would like to build relationship and communication skills.

Activities will include:

- Bowling
- Group games
- Outdoor activities
- Many More!

ALICE COGSWELL CENTER (ACC) SIGN CAMP

Population Served: HI

Dates: Call for information

Ages: Up to the age of 10 years

Fee: Call for information

Organization: Ohio School for the Deaf

Contact: Dr. Alison LaBarre

Address: 500 Morse Road; Columbus, OH 43214

Phone: 614-728-6900

Email: alabarre@osdb.oh.gov

Website: www.ohioschoolforthe deaf.org

Descriptor: This wonderful summer camp was designed for deaf, hard of hearing and hearing children up to age 10. Our goal is to have fun in a language rich environment. The camp has a bilingual/bicultural philosophy and all staff are fluent in sign language. Children are immersed daily in American Sign Language.



ASK (ADAPTIVE SPORTS FOR KIDS WITH DISABILITIES)

Population Served: AUT, ED, GT, HI, ID, MD, OI, OHI, SLD, S/LI, TBI, VI

Dates: Year-round program

Ages: 10 – 18 years

Fee: Call for information

Organization: Middleburg Heights Recreation

Contact: Sandy Balzer

Address: 16000 Bagley Road; Middleburg Heights, OH 44130

Phone: 440-234- 2255

Email: sbalzer@middleburgheights.com

Website: <https://middleburgheights.com/programs-classes/>

Descriptor: The Adaptive Recreation Program formally known as A.S.K. is an award-winning series of recreational programs, geared towards serving individuals with disabilities of all ages, regardless of residency. Since 1991, under the direction of Middleburg Heights Recreation Department staff, the participants have been taught the fundamentals of sports, good sportsmanship and how to have FUN! Thanks to the generosity of the Kiwanis Club, Women's Club and other local support, this innovative program continues our commitment to provide recreation activities to individuals of all abilities with the emphasis of fun & learning.

BEYOND OUR BONDARIES

Population Served: AUT, HI, ID, MD, OI, OHI, SLD, S/LI, TBI, VI

Dates: August 12 – 14, 2020

Ages: 18 years +

Fee: Call for information

Organization: Beyond Our Boundaries

Contact: Deb Shumard

Address: 601 Cleveland Avenue SW; Canton, OH 44702

Phone: 330-455-8111

Email: debra@beyondboundaries.com

Website: www.beyondboundaries.com

Descriptor: Bus trips and short vacations for adults with disabilities! Outstanding chaperones provide 1:3 ratio. Parent references available.



BLOOM

Population Served: AUT, MD, HI, OHI, TBI, ID, SLD, OI, S/LI

Dates: Mondays 3:30-4:30 throughout the year. Contact us to see what segment we are in.

Ages: 12-36 months (flexible)

Fee: \$22/session; Discount for 6 weeks prepaid

Organization: Talk Play Grow

Contact: Beth Brady M.A. CCC-SLP

Address: 1440 Rockside Rd Ste 201, Parma, OH 44134

Phone: 440-427-4433

Email: Ebrady@talkplaygrowllc.com

Website: www.talkplaygrowllc.com

Descriptor: BLOOM is a parent-child class designed to empower parents with strategies to help their child's speech and language development. Strategies and techniques discussed are meant to be incorporated into your daily routines and activities. This also serves as a play group and opportunities for social interaction will be built into the sessions!

BLOSSOM

Population Served: AUT, MD, HI, OHI, TBI, ID, SLD, S/LI

Dates: Call for information

Ages: 6-9 years old

Fee: Call for information

Organization: Sprout Therapy, LLC

Contact: Lori Kallevig

Address: Strongsville (Ehrnfelt Recreation Center)

Phone: 440-316-2416

Email: SPROUTtherapyLLC@gmail.com

Website: www.sprouttherapyllc.com

Descriptor: This group provides school age children (Kindergarten-3rd grade) a chance to learn and practice social skills. Through a combination of games and STEM based lessons, children have an opportunity to work together, problem solve, and increase overall communication in a natural environment. Group sessions are facilitated by an ASHA certified speech-language pathologist with a low student-instructor ratio.



BLOSSOM MUSIC CENTER SUMMER CONCERTS

Population Served: AUT, ED, GT, HI, ID, MD, OI, OHI, SLD, S/LI, TBI, VI

Dates: Call for information regarding start of summer programs

Ages: All

Fee: Depends on Program

Organization: Blossom Music Center

Contact: Blossom Music Center Guest Services

Address: 1145 W. Steels Corner Road; Cuyahoga Falls, OH 44223

Phone: 330-920-8040

Email: N/A

Website: <http://www.blossommusic.com>

Descriptor: Blossom Music Center has been considered Northeast Ohio's summer home for music lovers. Contact guest services for a detailed brochure on concert dates. Braille and large maps are available and transportation from parking lots to Pavilion available upon request.

BRIGHT TRANSITIONS SUMMER EXPERIENCE

Population Served: AUT, ED, ID, SLD, S/LI

Dates: July 14- August 14, 2020

Ages: 10 – 17 years

Fee: Varies

Organization: Bright Lives Collaborative

Contact: Johanna Sutton, M.Ed., Intervention Specialist

Address: 38091 Euclid Ave Unit 1 Willoughby, OH 44094

Phone: 440-571-5113

Email: jsunlimited2017@gmail.com

Website: www.aplearningcenterohio.com

Descriptor: Bright Transitions is a program that prepares participants for life after school through job exploration, emotional regulation exercises, and opportunities to develop independence within a supportive and inclusive setting.



CAMP CHEERFUL THERAPEUTIC HORSEMANSHIP PROGRAM

Population Served: AUT, HI, TBI, ID, OI, S/LI

Dates: Year-round lessons available. Our riding arena is heated in the winter.

Ages: Children and adults, ages 4 and older

Fee: \$350 per 10 week session

Organization: Achievement Centers for Children Camp Cheerful

Contact: Cory Ramsey

Address: 15000 Cheerful Lane; Strongsville, OH 44136

Phone: 440-238-6200 ext. 225 **Fax:** 440-238-1858

Email: cory.ramsey@achievementctrs.org

Website: campcheerful.achievementcenters.org

Descriptor: Camp Cheerful's Therapeutic Horsemanship Program provides a unique and therapeutic environment for children and adults ages 4 and older with special needs to ride and interact with horses. Interacting with horses provides space for participants to experience physical, cognitive, mental, and emotional growth through equine-assisted activities in an outdoor, natural environment.

The program focuses on developing skills that include decision making, social interaction, physical and emotional strength, and confidence to use in and outside of the program. Students develop peer relationships in a non-competitive and non-judgmental environment, helping them to be successful in a very special way. Weekly group lessons provide social support for parents and caregivers while their loved ones participate in beneficial and fun horsemanship activities.

CLEVELAND MIGHTY BARONS SLED HOCKEY

Population Served: OI

Dates: Call for dates

Ages: 5 – 18 years. Adults are welcome too

Fee: Call for information

Organization: Ohio Sled Hockey Inc.

Contact: Brian Knotts

Address: 37853 Brown Avenue; Willoughby, OH 44094

Phone: 440-942-4665

Email: clevemightybarons@yahoo.com

Website: www.ohiosledhockey.pointstreaksites.com

Descriptor: Sled Hockey is ice hockey played while sitting in a sled. Players wear full hockey equipment – helmets, neck guards, shoulder pads, elbow pads, gloves, hockey pants and shin guards. Sled hockey is easily adaptable and persons of any ability are able to participate. Benefits of sled hockey are: fun, good cardio workout, strengthens upper body, socialization, and promotes team work.



COMMUNITY ENGAGEMENT/EXTENDED COMMUNITY ENGAGEMENT

Population Served: AUT, MD, OHI, ID, SLD, S/LI

Dates: Community Engagement--June 22-July 26, 2020; Extended Community Engagement--July 27-August 7, 2020

Ages: 14-22 years

Fee: Community Engagement--\$150 add-on fee to New Avenues Summer Camp; Extended Community Engagement--\$250 per week

Organization: New Avenues to Independence

Contact: Cheryl General

Address: 8090 Broadmoor Rd., Mentor, Ohio 44060

Phone: 216-701-4577 **Fax:** 440-602-1003

Email: cgeneral@newavenues.net

Website: www.newavenues.net

Descriptor: New Avenues Summer Camp participants ages 14-22 have the option to add Community Engagement--attending community outings in Lake County with transportation provided by Laketrans--for an additional fee. Extended Community Engagement takes place for 2 weeks after New Avenues Summer Camp ends. Participants also attend community outings in Lake County with transportation provided by Laketrans. Community Outings that students have participated in previous summers include: swimming, bowling, fishing, ice skating, cooking at Young Chef's Academy, attending a Lake County Captains baseball game, and visits to Lake Farmpark, Holden Arboretum, Penitentiary Glen, & North Chagrin Nature Center. Contact Cheryl General at 216-701-4577 or cgeneral@newavenues.net to obtain the Community Engagement & Extended Community Engagement schedules for 2020.

FIELDSTONE FARM THERAPEUTIC RIDING CENTER

Population Served: AUT, ED, HI, ID, MD, OI, OHI, SLD, S/LI, TBI, VI

Dates: Weekly summer camp

Ages: 6 – 18 years old

Fee: Varies

Organization: Fieldstone Farm Therapeutic Riding Center

Contact: Lauren Simak

Address: 16497 Snyder Road Chagrin Falls, OH 44023

Phone: 440-708-0013 ext. 121

Email: lsimak@fieldstonefarmtrc.com

Website: www.fieldstonefarmtrc.com

Descriptor: Summer Camp is a time to **explore** new things, have **fun**, make **friends** and **enjoy** life. Summer Camp at Fieldstone Farm is a uniquely interactive experience where personal strengths are celebrated, horses and horse time are highly prized and friendships are fostered. Camp is fully integrated and open to campers of all abilities to maximize the experience for everyone involved.

Campers will ride or drive every day, groom and pick up their horses, clean their tack, learn about horses, work a little, get a little dirty, play, build and create horse-themed remembrances. Each week has a special horse related theme that we'll explore with great enthusiasm.



FIT FRIENDS

Population Served: AUT, ED, MD, HI, OHI, TBI, ID, SLD, VI, OI, S/LI

Dates: Thursdays weekly year-round

Ages: 13 and up

Fee: \$20 per week;

Organization: Rec2connect, LLC

Contact: Kia Picker

Address: The Gemini Center, 21225 Lorain Road - Fairview Park, OH 44126

Phone: 216-973-9647

Email: Kia.rec2connect@gmail.com

Website: www.rec2connect.com

Descriptor: This program is designed for individuals with special needs ages 14 and up. This class focuses on improving strength, endurance, muscle tone, fine and gross motor functions, and encouraging healthy fitness.



FIT (FRIENDSHIP IN TEAMS) CAMP

Population Served: AUT, SLD, S/LI

Dates: See website for information

Ages: 3-18 years old

Fee: Varies

Organization: FIT (Friendship in Teams)

Contact: Hilary Anderson

Address: The Lillian and Betty Ratner School, 27575 Shaker Blvd, Pepper Pike, OH 44124

Phone: 216-929-0026

Email: handerson@friendshipinteam.com

Website: www.friendshipinteam.com

Descriptor: FIT Camp is a one-of-a-kind summer day camp experience! The camp provides children with ample opportunities to develop social skills while engaging in a variety of fun activities with peers. The camp is designed for children ages 3-18 who need extra support in developing social skills. Children are grouped by age, and our 1:3 staff to child ratio insures that campers receive the guidance they need to get the most out of their experience. FIT camp is held for three weeks in mid-summer.





HEAD START FEDERALLY FUNDED PRESCHOOL

Population Served: AUT, ED, MD, HI, OHI, TBI, ID, SLD, VI, OI, S/LI

Dates: We are aligned with the Cleveland Metropolitan School District's academic calendar year.

Ages: Birth through 5 years

Fee: Our fees are based on current Federal Poverty Level Guidelines

Organization: The Council for Economic Opportunities in Greater Cleveland (CEOGC)

Contact: Thelma Bizzell, Director of Head Start Support or Dr. Thea Wilson, Vice President of Children and Families

Address: 1801 Superior Ave, Suite 400; Cleveland, OH 44114

Phone: 216-696-9077 **Fax:** 216-696-9084

Email: tbizzell@ceogc.org

Website: <http://www.ceogc.org>

Descriptor: The Council for Economic Opportunities in Greater Cleveland (CEOGC) is a nonprofit organization and the designated Community Action Agency for Cuyahoga County that operates programs and services dedicated to transforming the lives of residents. CEOGC operates the largest Head Start program in Ohio and delivers early childhood education, personal and professional development programs and support services to residents of Cuyahoga County.

LANGUAGE ROOTS

Population Served: AUT, ED, MD, HI, OHI, TBI, ID, SLD, S/LI

Dates: Call for information

Ages: Birth through age 2 years

Fee: \$145/6weeks

Organization: Sprout Therapy, LLC

Contact: Lori Kallevig

Address: Strongsville (Ehrnfelt Recreation Center)

Phone: 440-316-2416

Email: SPROUTtherapyLLC@gmail.com

Website: www.sprouttherapyllc.com

Descriptor: Parent/Child class to teach parents how to facilitate first words and grow early language with their little one! This camp provides opportunities for parents to get on the floor, play, and build language into routines they already have. Activities are provided to practice and try at home to keep their little one engaged and learning. This is a great group to teach foundational socialization skills by facilitating interactions with others.



MAYFIELD ADAPTED RECREATION PROGRAMS

Population Served: AUT, ED, GT, HI, ID, MD, OI, OHI, SLD, S/LI, TBI, VI

Dates: We run programs all year-round.

Ages: Generally 13 and up.

Fee: Prices vary upon program or event.

Organization: Mayfield Village Parks and Recreation Department

Contact: Danielle Echt

Address: 6622 Wilson Mills Road; Mayfield, OH 44143

Phone: 440-461-5163 or 440-461-2231

Email: decht@mayfieldvillage.com

Website: www.mayfieldvillage.com

Descriptor: We offer a variety of programs from special events, fitness, and social both indoor and outdoor.



MOTHER 2 MOTHER SUPPORT GROUP

Population Served: AUT, ED, MD, HI, OHI, TBI, ID, SLD, VI, OI, S/LI, Mothers and Caregivers

Dates: 2nd Saturday of the month

Ages: 0-99

Fee: No fee

Organization: Mother 2 Mother

Contact: Salina Miller

Address: 3619 Walton Ave Cleveland Ohio 44113

Phone: 216-584-5564

Email: Mother2mother32@gmail.com

Website: <http://mother2mother.info/>

Descriptor: Mother 2 Mother is designed for moms and caregivers to individuals with special needs . We offer support, education, empowerment and resources..



NORTHEAST OHIO CHALLENGER

Population Served: AUT, ED, MD, HI, OHI, TBI, ID, SLD, VI, OI, S/LI, ALL

Dates: May through August

Ages: 4-22

Fee: \$35

Organization: Little League Inc.

Contact: Jim Cipriani

Address: 1712 E. Royalton Rd.; Broadview Hts., OH 44147

Phone: 440-526-0394 Office
216-870-9242 Cell

Email: jamescipriani@sbcglobal.net

Website: <https://tshq.bluesombrero.com/neochallenger>

Descriptor: To teach the fundamentals of baseball and share sportsmanship and camaraderie for all players no matter what their skills. NEO Challenger Baseball is a family of players and parents. Parent share and inform each other of other activities and new medical treatments and advancements that may help keep their special children healthy and happy. As we celebrate 28 years of providing a recreational program for special needs, we also provide a social network of volunteers, parents, players and just good compassionate people that love and care for our special children.

QUANTUM LEAP

Population Served: AUT, ED, MD, HI, OHI, TBI, ID, SLD, VI, OI, S/LI

Dates: Call for information

Ages: 18 years and older

Fee: Varies by activity

Organization: Linking Employment, Abilities & Potential (LEAP)

Contact: Jayme Jirousek, Recreation Program Specialist

Address: 2545 Lorain Ave; Cleveland, OH 44113

Phone: 216-696-2716 ext. 824

Email: jjrousek@leapinfo.org

Website: www.leapinfo.org; Recreation page: <http://www.leapinfo.org/home-community/recreation>

Descriptor: Quantum LEAP provides social and recreational activities for individuals with disabilities. These activities are held in the evenings and on the weekends and take place at various community locations throughout Cuyahoga County. Events include: aerobics, bocce ball, bowling, basketball, dances, fishing, game nights, golf, walking club, and many more.



RESPITE SERVICES

Population Served: AUT, ED, MD, ID, SLD

Dates: Based on needs of the family

Ages: 5-28; Negotiable

Fee: Call for information

Organization: Inner-Circle Communities

Contact: Antonio Travis, Executive Director

Address: 5451 Broadview Road; Suite 3; Parma, Ohio 44134

Phone: 440-606-6231

Email: info@ICCommunities.org

Website: <http://www.ICCommunities.org>

Descriptor: Inner-Circle Communities provides respite services intermittent, short-term, hourly and overnight assistance to families in preventing abuse, neglect, and out-of-placement disruptions. We offer a variety of support care options for individuals and families with children with emotional-behavioral concerns allowing family members to take care of other needs, or simply take a break.

SOAP BOX DERBY RACING SPECIAL NEEDS

Population Served: AUT, ED, GT, HI, ID, MD, OI, OHI, SLD, S/LI, TBI, VI

Dates: See website for dates

Ages: 8 – 21 years or 150 lbs. – More on a case by case need

Fee: \$10.00 registration (refunded when you race)

Organization: Cleveland Area Soap Box Derby

Contact: Chris Dyer

Address: Visit Website

Phone: 216-970-6564

Email: clevelandarea@soapboxderby.org

Website: www.clevelandsoapboxderby.com

Descriptor: Children enter a specially designed dual controlled car with an experienced driver who has raced for several years, or an adult or parent depending on child's needs. All children receive a trophy, and sometimes a T-shirt and more. Approximately 1 – 3 hours, usually 10:00 am – 1:00 pm. Details and registration forms are available to download from our website as time draws near (30 days + -) or by phone



SOAR! (SPORTS OPPORTUNITIES & ACTIVE RECREATION)

Population Served: AUT, ED, GT, HI, ID, MD, OI, OHI, SLD, S/LI, TBI, VI

Dates: Visit website for information

Ages: Adults, 18+ years

Fee: Call for information

Organization: SOAR!

Contact: Scott Montgomery

Address: 32730 Walker Road, Suite I, #1 (in The Landings); Avon Lake, Ohio 44012

Phone: 440-327-6454

Email: montgomerysa0501@aol.com

Website: <http://soarprograms.org/>

Descriptor: SOAR! is an organization dedicated to providing sports, recreation and wellness activities for people with mental and physical developmental disabilities. Activities include: aerobics, baseball, bocce ball, bowling, dance, outdoor games, seated volleyball, water aerobics, walking, and yoga. Classes are conducted at locations in Western Cuyahoga County.

SOCIAL SKILLS CAMP: SOCIAL EXPLORERS

Population Served: AUT, SLD, S/LI, ADHD, anxiety, Asperger's

Dates: Call for information

Ages: 4-6 year olds

Fee: Call for information

Organization: Meghan Barlow & Associates

Contact: Christine Jurik, M.A., BCBA, COBA

Address: 20220 Center Ridge Road; Ste 165; Rocky River, OH 44116

Phone: 440-409-0307 or 440-420-1170

Email: christine@drmeghanbarlow.com

Website: www.meghanbarlowandassociates.com

Descriptor Young children with social delays, attention issues, and/or anxiety will both learn new skills and have fun in this structured and playful class! Participants will learn how to follow multiple-step group instructions, share, take turns, begin to identify emotions in self/others, and express their wants and needs effectively with peers using a combination of empirically validated strategies for teaching social skills and Michelle Garcia Winner's "We Thinkers!" curriculum. Parents will have 1:1 consultation time with the Masters-level clinician, in addition to receiving recommendations for the student's upcoming school year.



SOCIAL SKILLS CAMP: SUPERHEROES

Population Served: AUT, SLD, S/LI, ADHD, anxiety, Asperger's

Dates: Call for information

Ages: 7-9 year olds

Fee: Call for information

Organization: Meghan Barlow & Associates

Contact: Christine Jurik, M.A., BCBA, COBA

Address: 20220 Center Ridge Road; Ste 165; Rocky River, OH 44116

Phone: 440-409-0307 or 440-420-1170

Email: christine@drmeghanbarlow.com

Website: www.meghanbarlowandassociates.com

Descriptor This high energy indoor & outdoor class welcomes students with social delays, attention issues, and/or anxiety. The main goal is to learn ways to engage and build relationships to prevent summertime skill regression. Participants will learn how to sustain conversational exchanges, choose appropriate topics, remain on topic, demonstrate cooperation, and learn to use self-regulation techniques when peers do not do what they desire. This group uses a combination of empirically validated strategies for teaching social skills and Michelle Garcia Winner's entertaining Superflex® curriculum. Parents will have 1:1 consultation time with the Masters-level clinician, in addition to receiving recommendations for the student's upcoming school year.

SOCIAL SKILLS GROUP

Population Served: AUT, ED, MD, HI, OHI, TBI, ID, SLD, VI, S/LI

Dates: Ongoing

Ages: 2 – 17 years

Fee: \$50 per session

Organization: Reaching New Heights, LLC

Contact: Donna Culley, M.A. CCC/SLP

Address: 3505 East Royalton Road; Suite 221; Broadview Heights, OH 44147

Phone: 440-241-8366 **Fax:** 440-736-7600

Email: dculley@reachingnewhts.com

Website: www.reachingnewhts.com

Descriptor: We build socials skills groups around the specific needs of the children in the group. Small group sizes, high therapist to child ratio, and innovative methods provide a unique experience for the children. We will put together a group based on your schedule and your child's strengths and weaknesses.



SOCIAL SKILLS GROUP: THE CREW

Population Served: AUT, SLD, S/LI, ADHD, anxiety, Asperger's

Dates: Call for information

Ages: 10-12 year olds

Fee: Call for information

Organization: Meghan Barlow & Associates

Contact: Christine Jurik, M.A., BCBA, COBA

Address: 20220 Center Ridge Road; Ste 165; Rocky River, OH 44116

Phone: 440-409-0307 or 440-420-1170

Email: christine@drmeghanbarlow.com

Website: www.meghanbarlowandassociates.com

Descriptor: The concept of "The Crew" is to provide a casual, inviting atmosphere for tweens who are struggling socially but think therapy is not for them. The Masters-level clinician disguises her application of empirically validated techniques in a hip and fun way. The group takes trips to nearby restaurants for rehearsal opportunities. Participants learn how to sustain extended conversational exchanges utilizing appropriate topics, share with fellow peers personal social struggles in order to feel less alone, and receive peer advice on slight changes they can make to create more successful social interactions. Michelle Garcia Winner's engaging "Think Social!" curriculum is used. Parents will have 1:1 consultation time with the Masters-level clinician, in addition to receiving recommendations for the student's upcoming school year.

OLON BLUE RIBBON ADAPTED RECREATION PROGRAM

Population Served: AUT, ED, MD, HI, ID, SLD, OI, S/LI

Dates: Year-round

Ages: 12 years and up

Fee: Varies with specific activity

Organization: Solon Recreation Department

Contact: Jillian Babej

Address: 35000 Portz Parkway; Solon, OH 44139

Phone: 440-337-1427 **Fax:** 440-349-6331

Email: jbabej@solonohio.org

Website: www.solonohio.org

Descriptor: The Solon Blue Ribbon Adapted Recreation Program provides community based recreation and leisure activities for persons with developmental disabilities, enabling each to enhance his or her personal potential by sharing in the emotional, social and physical benefits fostered by such experiences. Blue Ribbon programs are open to non-Solon residents as well as residents.



SPECIAL NEEDS SENSORY JUMP

Population Served: AUT, HI, OHI, ID, SLD, S/LI

Dates: Special Needs Open Jump for children with Special Needs and their families:
Every Monday night 4:30-6:00pm

Ages: Any age: as long as you can walk, you can jump.

Fee: \$15 for 90 minutes of Jump time. No additional charge for the structured programming events

Organization: Sky Zone Cleveland

Contact: David Dabney

Address: 31500 Viking Parkway; Westlake, OH AND 750 Alpha Drive; Highland Heights, OH

Phone: 1-844-CLE-JUMP

Email: david.dabney@skyzone.com

Website: www.skyzone.com/westlake and www.skyzone.com/highlandheights

Descriptor: Open jump time for children with special needs and their families, is offered every Monday night from 4:30-6:00pm. Structured programming events include; Fitness classes, dodgeball, volleyball, as well as other supervised games, all on the trampolines. The Fun Zone is also included that offers activities to improve fine motor skills. All activities are led by our Sky Zone team, trained by the Cleveland Clinic Center for Autism.

SPROUT

Population Served: AUT, MD, HI, OHI, TBI, ID, SLD, S/LI

Dates: Call for information

Ages: Preschool

Fee: Call for information

Organization: Sprout Therapy, LLC

Contact: Lori Kallevig

Address: Ehrnfelt Recreation Center (Strongsville Rec)

Phone: 440-316-2416

Email: SPROUTtherapyLLC@gmail.com

Website: www.sprouttherapyllc.com

Descriptor: This group provides a theme each week to initiate a skill, an activity to practice in a structured setting, and opportunities to practice with less structure but adult facilitation. Low student to therapist ratio. Direct instruction for children with communication delays/difficulties. All groups instructed by ASHA certified speech-language pathologist!



S.T.A.R. CAMP - STUDENTS TOGETHER ACHIEVING RESPECT

Population Served: AUT, MD, HI, OHI, TBI, ID, SLD, VI, OI, S/LI

Dates: July 6 – 17, 2020

Ages: 3 to 22

Fee: \$325.00 per week per camper

Organization: S.T.A.R. CAMP

Contact: Lori Wotowiec ages 3 to 12; preschool and school age camp director
Jim Wotowiec ages 13 to 22; high school camp director

Address: P.O. Box 41066 Brecksville, Ohio 44141

Phone: Lori Wotowiec - 216-618-0807 for ages 3-12
Jim Wotowiec- 216-407-0139 for ages 13-22

Email: wotowiecl@aol.com Ages 3 to 12; wotowiecj@aol.com Ages 13 to 22

Website: starsummerncamp.org

Descriptor: Our Mission: To provide an integrated camp experience for individuals with disabilities and typical peers that creates an environment that promotes educational reinforcement, physical activity, social skills, cooperative group learning and will facilitate access, equity and inclusion. Camp is held at the City of Independence Elmwood Park. S.T.A.R. camp offers a pre- school - school age and high school camp experience. Complete camp information, forms and contacts can be found at the STAR CAMP web - site www.starcampsummer.org

S.T.A.R. camp meets requirements for extended school year services. Low teacher camp ratios allow each participant to be immersed in quality individual programming. Typical peers trained in disabilities serve as role models. The camp is staffed by intervention specialists, movement specialists and interns.

SWIM SAFETY

Population Served: AUT, ED, MD, HI, OHI, TBI, ID, SLD, VI, OI, S/LI

Dates: January 9 – February 1, 2020 and every 6 weeks year-round

Ages: 3-14 years

Fee: \$150 per 6 week session

Organization: Rec2connect, LLC

Contact: Kia Picker

Address: The Friendship Circle, 27900 Gates Mills Blvd, Pepper Pike, OH 44124

The Gemini Center, 21225 Lorain Road - Fairview Park, OH 44126

Phone: 216-973-9647

Email: Kia.rec2connect@gmail.com

Website: www.rec2connect.com

Descriptor: This program is designed for children with special needs ages 3-14 and their families to learn swim safety and beginning swim skills in a safe, fun environment. Skills addressed are increased safety awareness, ability to reach side of the pool and climb out, increase comfort in water, increase motor planning and swim skills.



THE KIDNECTIONS GROUP KITCHEN CONNECTIONS AND DIY CLASSES

Population Served: AUT, MD, HI, OHI, ID, SLD, S/LI

Dates: Visit our website for further information

Ages: 10 years+

Fee: Varies per class

Organization: The KIDnections Group, LLC

Contact: Jamie Hughes, Maria Llerena, or Elizabeth Radachi

Address: All classes are held at North Olmsted Recreation Center; 26000 Lorain Road; North Olmsted, OH 44070
Registration is required.

Phone: 216 262-8163

Email: thekidnectionsgroup@gmail.com

Website: www.thekidnectionsgroup.com

Descriptor: The KIDnections Group will be offering several workshop-style cooking classes for children ages ten and older with ASD and other related diagnoses affecting social development. Classes will be two hours in length and are perfect for a budding young chef. Participants will learn and practice valuable kitchen skills while sharing cooking experiences with their peers. As participants read recipes and follow the directions, they will gather, measure, and mix ingredients while learning about various kitchen tools and how to use them properly. In addition to addressing kitchen safety and sanitary skills, social and conversational skills will be naturally woven into this kitchen experience as participants work together to make delicious recipes. Both verbal and non-verbal communicators are encouraged to join – SGDs are welcome! Sign up for 1, 2, or all 3 classes! We hope to see you there!

THE UP SIDE OF DOWNS OF NORTHEAST OHIO

Population Served: MD, ID

Dates: Ongoing, please see our website or Facebook page for dates and details.

Ages: 0-99

Fee: Fee varies per program.

Organization: The Up Side of Downs

Contact: Barb Waddle, Laurie Kowalski, Gina Mitchner

Address: 6533 B Brecksville Rd.; Independence, OH 44131

Phone: 216-447-8763 Fax: 877-353-8763

Email: lauriek@usod.org, barbw@usod.org, gina@usod.org

Website: www.usod.org

Descriptor: The Up Side of Downs is the primary resource for families and communities regarding Down syndrome, where all people are accepted, included and empowered. The Up Side of Downs envisions a community where people with Down syndrome have limitless opportunities and the ability to pursue their dreams. Some of our programs include: Mom's Night Out, Grandparents Group, Baby and Toddler Playgroups, Family Night Out, Buddy Up Tennis, Karaoke, Educational programs, The Learning Program, T.E.E.N. program, Exercise classes, Field trips, Mind Body Soul, Strider Bike Camp and Sibshops. Please see our website for more details and for dates/times/locations.



THRIVE

Population Served: AUT, MD, HI, OHI, TBI, ID, SLD, S/LI

Dates: Visit website for further information

Ages: 10-15 years old

Fee: \$162/6weeks

Organization: Sprout Therapy, LLC

Contact: Lori Kallevig

Address: Strongsville (Ehrnfelt Recreation Center)

Phone: 440-316-2416

Email: SPROUTtherapyLLC@gmail.com

Website: www.sprouttherapyllc.com

Descriptor: Camp Thrive is a camp designed to promote social skills, leadership, and acceptance among children grades 4 through 7. This camp is designed for all children within this age group. Each week will consist of a theme, lesson, and game and/or activity to allow repeated practice in a natural way. Progress overview will also be available at the end of the camp. Electronics will be used minimally during this camp to teach and encourage natural conversation and interaction between children. Activities will vary between board games and STEM based activities to promote working collaboratively.

THRIVE SUMMER CAMP

Population Served: AUT, MD, OHI, TBI, ID, SLD, S/LI

Dates: Call for information

Ages: 5-18

Fee: Call for information

Organization: Therapy and Wellness Connection

Contact: Jaclyn McClymont or Mackenzie Millward

Address: 10010 Brecksville Rd Brecksville, OH 44141

Phone: 330-748-4807

Email: thrivecentertwc@gmail.com

Website: therapyandwellnessconnection.com

Descriptor: We are a therapeutic and recreational camp for campers of all ages and abilities. Therapist led daily outings and activities to learn new skills, make new friends, try new things, and generalize in the community.



TRINITY SPECIAL OLYMPICS ICE SKATING LESSONS

Population Served: AUT, ED, MD, HI, OHI, ID, VI, OI

Dates: September – May, Sunday classes

Ages: 5 yr. old to adults

Fee: Call for information

Organization: Special Olympics Ohio

Contact: Sharon Stark

Address: 22861 Mastick Rd.; Fairview Park, OH 44126

Skating lessons at:
IceLand USA Lakewood, 14740 Lakewood Hts. Blvd.; Lakewood, OH 44107

Phone: 216-529-4400 ext. 105

Email: tsolympics@hotmail.com

Website: N/A

Descriptor: Ice skating lessons are designed for children, teens and adults to teach the basics of how to ice skate. Volunteers from the community assist 1-1 to physically and verbally encourage each skater to learn at their own pace. Figure skating and speed skating skills are also taught for Special Olympics sports specific training for competition. This is a great recreational sports program for meeting and making friends!

TRINITY SPECIAL OLYMPICS TRAINING PROGRAM

Population Served: AUT, ED, MD, HI, OHI, ID, VI

Dates: September – April Sundays only

Ages: 5 - adult

Fee: Call for information

Organization: Special Olympics Ohio

Contact: Sharon Stark, Local Coordinator

Address: Mailing Address: 22861 Mastick Road; Fairview Park, OH 44136
Lessons taught at IceLand USA - Serpentine Arena at Winterhurst: 14740 Lakewood Hts. Blvd. Lakewood, OH 44107

Phone: 216-529-4400 ext. 105

Email: tsolympics@hotmail.com

Website: None

Descriptor: The Trinity Special Olympics training program offers socialized ice skating lessons to individuals (5- adult) who demonstrate a need for more personalized and individualized instruction. Ice skating instruction includes one-on-one assistance in the ice by trained volunteer assistants from the community, and group instruction by qualified instructors under the directions of the founder and Program Director, who has 35 years of experience in the field.

Sports specific training for Special Olympics competition is taught for developmental basic skills, figure skating and speed skating.



VALLEY RIDING THERAPEUTIC RIDING PROGRAM

Population Served: AUT, ED, HI, ID, MD, OI, OHI, SLD, S/LI,

Dates: Call for information

Ages: 4 years old and up and under 160 pounds

Fee: \$325.00 for 10 classes

Organization: Valley Riding, Inc.

Contact: Barbara Bower

Address: 19901 Puritas Road; Cleveland, OH 44135

Phone: 216-267-2525

Email: info@valleyriding.org

Website: www.valleyriding.org

Descriptor: We offer a Therapeutic Horseback Riding Program. Classes are offered on Tuesday's all year round. The first class starts typically at 4:00pm and the last class ends at 8:30pm. Each class is 45 minutes long. We have a maximum of 6 riders per class. Each rider will have a leader and possibly one or two side walkers depending on that riders need. The movement and shape of the horse allows tight, spastic muscles to relax to enhance posture and balance. Emotionally and socially, each student interacts with the horse and the trained volunteers who assist with their riding lesson. Horseback riding helps students with Balance, Coordination, Flexibility, Muscle Tone, Verbal Skills, Posture, Self Confidence, Self Esteem, Social Skills and Learning Skills.

YOUTH CHALLENGE

Population Served: HI, TBI, VI, OI

Dates: Year round

Ages: 4-18

Fee: None. Suggested donation based on frequency of attendance.

Organization: Youth Challenge

Contact: Mackenzie Vecchio

Address: 800 Sharon Drive Youth Challenge

Phone: 440-892-1001 **Fax:** 440-892-1004

Email: mvecchio@youthchallengesports.com

Website: <http://www.youthchallengesports.com/>

Descriptor: Youth Challenge offers adaptive sports, recreation, art and more for young people with physical disabilities. Programs are held all over Greater Cleveland and transportation is provided at no cost. YC staff have extensive knowledge in adapting activities for maximum participation. YC staff are also equipped to handle personal care needs. All YC participants are paired with a teen volunteer to provide assistance and friendship.



YOUTH EMPOWERMENT & LEADERSHIP PROGRAM (YELP)

Population Served: HI, TBI, VI, OI

Dates: Year-round. Wednesday evening engagement sessions and monthly outings.

Ages: 16 – 25

Fee: None. Suggested donation based on frequency of attendance.

Organization: Youth Challenge

Contact: Mackenzie Vecchio

Address: 800 Sharon Drive Youth Challenge

Phone: 440-892-1001 **Fax:** 440-892-1004

Email: mvecchio@youthchallengesports.com

Website: <http://www.youthchallengesports.com/>

Descriptor: The Youth Empowerment & Leadership Program (YELP) provides opportunities for people with physical disabilities between the ages of 16-25. Programs include social outings and educational sessions at YC on relevant topics such as healthy living. YELP provides guidance and encouragement for independence, confidence and self-efficacy for participants during a pivotal time of transition in their lives.

GENERAL INFORMATION





ADULT DAY SUPPORT / VOCATIONAL TRAINING

Organization: Josiah's House, Inc.

Contact: Irene Jones

Address: 981 Keynote Circle Drive; Ste. 13; Brooklyn Heights, OH 44131

Phone: 216-236-6960

Descriptor: Josiah's House, Inc. is a non-profit 501C3 that provides a safe and caring setting in which individuals with developmental differences across the Autism Spectrum can realize their God-Given purpose. It provide a pathway to employment and community integration through training and real employment opportunities. These resources are invaluable in empowering our Friends to realize a greater degree of self-sufficiency and dignity in their everyday lives.

AUTISM, ADHD, LEARNING DIFFERENCES ASSESSMENT

Population Served: AUT, ED, MD, OHI, ID, SLD

Dates: Year-round

Ages: 18 months to 18 years

Fee: Psychological services are charged per hour for the assessment.

Organization: Meghan Barlow & Associates

Contact: Heather Dukes-Murray, PhD

Address: 20220 Center Ridge Road; Ste 165; Rocky River, OH 44116

Phone: 440-409-0307

Email: Heather@drmeghanbarlow.com

Website: www.meghanbarlowandassociates.com

Descriptor: Families may seek a comprehensive evaluation for their child if they are concerned about their child's functioning and progress in school, or if they are questioning the possibility of an underlying condition such as an attention or ADHD. Dr. Heather Dukes-Murray conducts comprehensive evaluations in an expedited time frame to help you and your child move on to needed services faster.



AUTISM RESOURCES

Population Served: AUT

Ages: Children and adults

Fee: Free

Organization: Autism Speaks

Contact: Colleen Shinn

Address: 4700 Rockside Road; Independence, OH 44131

Phone: 216-524-2842

Email: colleen.shinn@autismspeaks.org

Website: www.autismspeaks.org

Descriptor: Serving all communities in Ohio, Autism Speaks is dedicated to promoting solutions, across the spectrum and throughout the life span, for the needs of individuals with autism and their families. We do this through advocacy and support, increasing understanding and acceptance of people with autism, and advancing research into causes and better interventions for autism spectrum disorder and related conditions.

EARLY INTERVENTION

Population Served: Early Intervention

Dates: Year-round

Ages: Birth to age 3

Fee: The Individuals with Disabilities Education Act or IDEA, requires that some Early Intervention (EI) activities and services are provided at no cost to parents. Child find, evaluation and assessment, development of the Individualized Family Service Plan, procedural safeguards, and service coordination are publicly funded and provided at no cost to parents.

Organization: Bright Beginnings (formerly Help Me Grow)

Contact: Beth Hensley

Address: 6393 Oak Tree Blvd.; Suite 201; Independence, OH 44131

Phone: 216-698-7500 **Fax:** 216-391-6106

Email: Referrals@brightbeginningskids.org

Website: www.brightbeginningskids.org

Descriptor: Bright Beginnings uses an evidence-based early intervention approach that includes the parent, service coordinator, and a primary service provider from a team composed of an occupational therapist, physical therapist, speech language pathologist, developmental specialist, early childhood mental health therapist and other specialists as needed.



CAMP CHRISTOPHER

Population Served: AUT, MD, ID, SLD, OI, S/LI

Dates: June through August for Day and Resident Camping programs; year round respite weekends offered.

Ages: 6-Adulthood

Fee: Based on program attended. Accept Private Pay, Medicaid and other funders.

Organization: Catholic Charities/Camp Christopher

Contact: Tess Flannery, Tom McGraw

Address: 1930 North Hametown Road; Bath Township, OH 44333

Phone: 330-762-2961 **Fax:** 330-762-2001

Email: campchristopher@ccdogle.org

Website: <http://ccdogle.org/camp-christopher>

Descriptor: Since 1924, Camp Christopher has been serving youth in Northeast Ohio. Camp Christopher provides a range of services to campers with special needs including day, overnight, and respite sessions. Staff to camper ratio is 1:4-5, and a nurse is on site to pass medication and to address emergencies. Activities include swimming, canoeing, archery, horseback riding, high and low ropes challenge courses, arts & crafts, field games and more.

CLEVELAND CHILDREN'S MUSEUM

Address: 10730 Euclid Avenue; University Circle; Cleveland, OH 44106

Phone: 216-791-KIDS

Website: www.clevelandchildrensmuseum.org

Descriptor: The Cleveland Children's Museum is more than a museum. It is an activity center that offers hands-on exhibits plus a variety of daily programs. For a detailed brochure call 216-791-KIDS



General Information

CLEVELAND HEARING AND SPEECH CENTER

Population Served: AUT, MD, HI, OHI, TBI, ID, SLD, S/LI

Dates: Ongoing

Ages: All Ages

Fee: Insurance and private pay

Organization: Cleveland Hearing & Speech Center

Contact: Call the number below

Address: 11635 Euclid Ave Cleveland, OH 44106

Phone: 216-231-8787

Email: N/A

Website: www.chsc.org

Descriptor: Cleveland Hearing & Speech Center is the premier provider of hearing, speech-language, and deaf services, education and advocacy, helping people connect through communication. We provide evaluations and therapy to promote communication among children of all ability levels. Our offices are located in University Circle, Broadview Heights, Westlake, and Lyndhurst. Intensive intervention options for both individuals and groups are available over the summer.

CLEVELAND MUSEUM OF ART

Address: 11150 East Boulevard; University Circle; Cleveland, OH 44106

Phone: 216-421-7350 or 888-262-0033

Website: www.clevelandart.org

Descriptor: Art classes are held for preschool through 17 years of age. The Museum houses an extensive collection of 6,000 years of art encompassing many areas of art, cultures, and geographic areas. It also offers classes for children and adults. There is a free gallery talk at 1:30 pm every day. Other programs include audio-visual presentations, gallery tours, films, lectures, and concerts. For a detailed brochure, contact the Cleveland Museum of Art, Department of Education & Public Programs.

CLEVELAND MUSEUM OF NATURAL HISTORY

Address: 1 Wade Park Oval Drive; University Circle; Cleveland, OH 44106

Phone: 216-231-4600, ext. 214

Website: www.cmnh.org

Descriptor: For detail brochure on the following programs:

- gallery talks, guided tours, and films
- live animal programs daily
- planetarium programs

Call CMNH to request brochure listing programs, times, and admission.



COACHING AND CONSULTATIONS

Population Served: AUT

Dates: Ongoing

Ages: All ages

Fee: Call for information

Organization: Milestones Autism Resources

Contact: Beth Thompson, Program Director

Address: 23880 Commerce Park; Beachwood, OH 44122

Phone: 216-464-7600 **Fax:** 216-464-7602

Email: bthompson@milestones.org

Website: milestones.org

Descriptor: Milestones' coaching support helps parents, caregivers, and individuals become more informed and confident about behavioral and educational strategies. Milestones also provides in-depth consultations. Consultations help lead individuals to greater independence, increased community integration, and ultimately, an improved quality of life for them and their family. Agency consultations provide additional assistance and autism-specific expertise to address the agency's particular needs and situation. Milestones partners with and offers customized trainings for school districts and professional organizations for a fee. Trainings are tailored to meet the organization's strengths, needs, and identified goals. Services may include program evaluation and observation of setting prior to training.

COMMUNITY EMPLOYMENT/TWO FOUNDATION

Population Served: AUT, ID, MD, SLD, TBI

Dates: Open Enrollment

Ages: 16+

Fee: Varies depending on services provided

Organization: Two Foundation

Contact: Shari Hunter

Address: 8410 East Washington St.; Chagrin Falls, OH 44023

Phone: 440-384-3236

Email: Shari@twofoundation.com

Website: Twocafeandboutique.com or Twofoundation.com

Descriptor: We have the Two Café and Boutique where individuals work in a fully integrated setting. We work on job training, coaching and job placement. We have over 22 businesses that hire from us and become the natural supports.



CONNECTING FOR KIDS

Population Served: AUT, ED, MD, HI, OHI, TBI, ID, SLD, VI, OI, S/LI

Dates: Ongoing

Ages: Birth to 12

Fee: Free

Organization: Connecting for Kids

Contact: Family Resource Specialist

Address: P.O. Box 45372; Westlake, OH 44145

Phone: 440-570-5908

Email: info@connectingforkids.org

Website: www.connectingforkids.org

Descriptor: Connecting for Kids (CFK) is a nonprofit organization with a mission to provide education and support to families in Cuyahoga and Lorain counties who have concerns about their child. We serve all families, including those children with and without formal diagnoses. If your child is struggling, you're not alone. CFK can help.

COUNCIL FOR ECONOMIC OPPORTUNITIES IN GREATER CLEVELAND (CEOGC) COMMUNITY SERVICE

Population Served: ED, MD, HI, OHI, SLD, OI

Dates: Yearly Program

Ages: Adults 18 – 99 years old

Fee: Federal and State Program - No fees

Contact: Laurice Kennedy-Brown, Community Service Program Manager

Address: 1801 Superior Avenue; 4th Floor; Cleveland, OH 44115

Phone: 216-696-9007, Ext. 231 **Fax:** 216-696-9167

Email: lkbrown@ceogc.org

Website: www.ceogc.org

Descriptor: We invest in people, nurture success and transform lives.



General Information

CUYAHOGA COUNTY BOARD OF DEVELOPMENTAL DISABILITIES: FAMILY SUPPORTS PROGRAM

Population Served: AUT, ED, MD, HI, OHI, TBI, ID, SLD, VI, OI, S/LI

Dates: All Summer

Ages: All ages

Fee: Based upon your Family Supports Program allotment

Organization: Cuyahoga County Board of Developmental Disabilities Family Supports Program

Contact: Cuyahoga Family Supports Program

Address: 721 Boardman Poland Rd., Boardman, OH 44512

Phone: 216-237-6828 Option 2 **Fax:** 1-855-336-6968

Email: campership@cuyahogabdd.org

Website: www.Cuyahogabdd.org; www.neoncog.org

Descriptor: Individuals enrolled with Cuyahoga DD who are eligible for services may qualify for some financial assistance through the Family Supports Program. If you are already enrolled in the Family Supports Program, submit a Camp Assistance form which can be found in the Family Support section at www.neoncog.org. If you are not enrolled in the Family Supports Program, visit www.cuyahogabdd.org (Family Supports Program) for the simple application or call 216-736-2947. If you have a Support Administrator (SA), contact him/her directly to discuss camp options.

CUYAHOGA COUNTY BOARD OF HEALTH: CHILDREN WITH MEDICAL HANDICAPS PROGRAM

Population Served: MD, HI, OHI, TBI, VI, OI, and certain diagnosed medical conditions

Dates: Every family is on their own timeline. If a family is on the Treatment Program it is for 1 year.

Ages: Birth - 21

Fee: No financial requirement for the diagnostic portion of the program, the Treatment Program requires the family to meet financial eligibility set by The Ohio Department of Health. No fee to apply for programs.

Organization: Cuyahoga County Board of Health

Contact: Debbie Horvath, Program Supervisor: 216-201-2001 ext. 1339

Address: 5550 Venture Drive; Parma OH,

Phone: 216-201-2000; CMH ext. 2015 **Fax:** 216-676-1319

Email: dhorvath@ccbh.net

Website: ccbh.net

Descriptor: Supplemental insurance program through The Ohio Department of Health that helps eligible families with co-pays, medications, equipment, etc.



General Information

CUYAHOG COUNTY PUBLIC LIBRARY, ADAPTED LIBRARY PROGRAMS

Population Served: AUT, ED, MD, HI, OHI, TBI, ID, SLD, VI, OI, S/LI

Dates: Adapted programs are offered throughout the year at various branch locations.

Ages: All Ages

Fee: No fee

Organization: Cuyahoga County Public Library

Contact: Julia Boxler

Address: 2111 Snow Road; Parma, OH 44129

Phone: 216-398-1800

Email: jboxler@cuyahogalibrary.org;

Website: www.cuyahogalibrary.org

Descriptor: Adapted programs are offered throughout the year at various library branch locations.

EMPOWERING EPILEPSY

Population Served: ED, MD, OHI, TBI

Ages: All Ages – All events are family friendly

Fee: See our website for information

Organization: Empowering Epilepsy

Address: 32342 Springside Lane Solon, Ohio 44139

Contact: Leigh Goldie, Founder and Executive Director

Phone: 440-248-6158

Email: leigh@empoweringepilepsy.org

Website: <http://empoweringepilepsy.org>

Facebook page: www.facebook.com/empoweringepilepsy

Descriptor: Empowering Epilepsy was created by people in Cleveland, Ohio directly affected by epilepsy. While looking for support, there were limited resources outside the neurologist's office. We provide programs and events as a way to create a caring community that allows people with epilepsy and their families to find active ways to manage their seizures and take charge of their lives.



General Information

EPILEPSY EDUCATION/KIDS AND FAMILY PROGRAM

Population Served: AUT, ED, MD, HI, OHI, TBI, ID, SLD, VI, OI, S/LI

Dates: Ongoing

Ages: Birth through 12th Grade

Fee: Free

Organization: Epilepsy Association

Contact: Nicole Richter-Director of Community Programming

Address: 2831 Prospect Ave.; Cleveland, OH 44115

Phone: 216-579-1330 **Fax:** 216-771-5114

Email: nrichter@epilepsyinfo.org

Website: www.epilepsyinfo.org

Descriptor: Epilepsy Association professionally trained staff are available to provide in-school educational presentations to staff and students on seizure first aid and basic epilepsy education. Staff training focuses on identifying and responding appropriately to different types of seizures as well as special considerations for students with epilepsy. A puppet show is available for preschool through 3rd grade students which focuses on basic epilepsy education and acceptance. Education for older students focuses on basic seizure first aid and dispelling epilepsy myths as well as addressing stigma. One-on-one resources are available for families who have a child with epilepsy. Our case managers can meet in the community to assess the needs of each family member and connect them with supportive community resources. Our case managers provide general support, epilepsy education, and advocacy.

HATTIE LARLHAM CONSTANT COMPANIONS

Contact: Stacy Timm

Address: 1402 Boettler Road, Suite A; Uniontown Ohio 44685

Phone: 330-899-9067

Email: stacy.timm@hattielarham.org

Website: www.hattielarham.org

Descriptor: Constant Companions is a unique alternative to traditional work or day programs for people with developmental disabilities. The program focuses on the mutually beneficial interaction between people with disabilities and various domestic animals such as dogs, cats, rabbits, birds and fish. These animals are used as teaching aids to encourage participants to nurture and learn about the animals in their care.



General Information

HATTIE'S DOGGIE DAY CARE & BOARDING

Contact: Mike Sturdivant

Address: 7996 Darrow Road; Suite 40; Twinsburg, OH 44087

Phone: 330-405-0624

Email: Michael.sturdivant@hattielarham.org

Website: www.hattielarham.org

Descriptor: Hattie's Doggie Day Care & Boarding is committed to provide your beloved canine with luxury accommodation and great staff! This is a work training program for people with disabilities that aspire to pursue a career in the pet or animal care industry. Our mission is dual purpose: to support our employees to achieve the highest level of success, and provide customers with exceptional service!

Additional Locations: 18200 Brookpark Rd.; Cleveland, OH 44135; 216-999-7352

2778 Greensburg Rd.; Ste. A; North Canton, OH 44720; 330-899-8565

KIDS AND FAMILY (EPILEPSY ASSOCIATION)

Population Served: OHI

Dates: Ongoing

Ages: Birth-17 years

Fee: Free

Organization: Epilepsy Association

Contact: Nicole Richter-Director of Community Programming

Address: 2831 Prospect Ave.; Cleveland, OH 44115

Phone: 216-579-1330 **Fax:** 216-771-5114

Email: nrichter@epilepsyinfo.org

Website: www.epilepsyinfo.org

Descriptor: Epilepsy Association's Kids and Family program can assist with assessing a family's situation with a child with epilepsy and connect them with the community resources that best address the family's needs. The service is provided by a case manager who is familiar with the unique needs and challenges families dealing with epilepsy face. Our goal is to help relieve the stress the family may be experiencing, increase the ability to meet the challenges of raising a child with epilepsy, and connect families with helpful community resources and with others who have faced similar challenges.



KIDSFIRST AUTISM RESEARCH REGISTRY

Population Served: AUT

Dates: Ongoing

Ages: All ages

Fee: None

Organization: Case Western Reserve University

Contact: Anastasia Dimitropoulos

Address: 10900 Euclid Ave, Cleveland, OH 44106

Phone: 216-368-0112

Email: Anastasia.Dimitropoulos@uhhospitals.org

Website: <http://kidsfirst.stanford.edu/ICARE>

Descriptor: KidsFirst is recruiting parents of individuals with autism (all ages) to enroll in a registry aimed at identifying similarities across individuals and establishing behavioral classification to better understand autism. At enrollment, they ask parents to answer a 10-minute survey which guides future requests for information, such as targeted follow up questions and possible genetic sampling. The information provided will help translate findings into targeted approaches for therapy, care and intervention. Information gathered will be strictly confidential, anonymized and encrypted in a HIPAA-compliant repository. Participation is free and all correspondence is through the registry, email and telephone. The International Center for Autism Research and Education (ICARE) at CWRU is partnered with the Hartwell Foundation and Stanford University to establish Northeast Ohio as a KidsFirst site.

LEAFBRIDGE, A CENTER OF EXCELLENCE FOR CHILDREN OF UCP OF GREATER CLEVELAND

Population Served: AUT, MD, OHI, TBI, ID, VI, OI, S/LI

Dates: Yearly

Ages: Infant – 22 years

Fee: Variable depending on service. Medicaid and Insurance accepted as well as sliding scale based on income.

Organization: United Cerebral Palsy of Greater Cleveland

Contact: Celia Chesnick

Address: 10011 Euclid Avenue; Cleveland, OH 44106

Phone: 216-791-8363; **Fax:** 216-721-3372

Email: cchesnick@ucpcleveland.org

Website: www.leafbridge.org

Descriptor: LeafBridge, A Center of Excellence for Children with Disabilities at UCP of Greater Cleveland has therapy and family support services for infants and children (up to 22 years of age) with a variety of developmental delays and disabilities including, but not limited to, cerebral palsy, traumatic brain injury, developmental delay, spinal cord injury, genetic disorders and autism spectrum disorder. LeafBridge's philosophy stresses early intervention and holistic, family-focused care. The multidisciplinary therapy services are based on a collaborative process with a team comprised of licensed physical and occupational therapists, speech-language pathologists, case managers and parents. The team works together to design treatment programs that will promote the child's development in all areas of health and wellness.



LIVESPECIAL.COM

Population Served: AUT, ED, MD, HI, OHI, TBI, ID, SLD, VI, OI, S/LI

Dates: All year

Ages: Birth-Elderly

Fee: Free

Organization: Livespecial.com, a project of NCJW

Contact: Wendy Spitz, Coordinator, 216-509-5015

Address: 26055 Emery Road; Warrensville Heights, OH 44128

Phone: 216-378-2204

Email: livespecial.com@gmail.com

Website: livespecial.com

Descriptor: LiveSpecial.com is a comprehensive compilation of resources in the Greater Northeast Ohio area. This website provides resources and service links to enhance the quality of life for individuals with special needs and/or anyone who develops a special need. Free programs and trainings. Resourceful On-Line Video Gallery.

MILESTONES AUTISM RESOURCES INDIVIDUAL AND FAMILY CONSULTATIONS

Population Served: AUT

Fee: Fee information at milestones.org

Organization: Milestones Autism Resources

Address: 4853 Galaxy Parkway; Suite A; Warrensville, OH 44128

Phone: 216-464-7600

Email: info@milestones.org

Website: www.milestones.org

Descriptor: Let Milestones support you in your next challenge or life-stage transition. Our knowledgeable staff can create an individualized action plan just for you.



MILESTONES NATIONAL AUTISM CONFERENCE

Population Served: AUT

Dates: June 11-12, 2020

Fee: Fee information at milestones.org

Organization: Milestones Autism Resources

Address: 4853 Galaxy Parkway; Suite A; Warrensville, OH 44128

Phone: 216-464-7600 **Fax:** 216-464-7602

Email: info@milestones.org

Website: milestones.org

Descriptor: Join professionals, family members and individuals with ASD from across the country to gain practical strategies, earn CEUs and empower one another through education.

MILESTONES FREE AUTISM HELPDESK

Population Served: AUT

Dates: Ongoing

Organization: Milestones Autism Resources

Contact: Estee Ezinski

Address: 4853 Galaxy Parkway; Suite A; Warrensville, OH 44128

Phone: 216-464-7600 ext. 200

Email: help@milestones.org

Website: www.milestones.org

Descriptor: Need assistance finding a school, therapist, doctor, support group or more? Call the Milestones Helpdesk to get connected with vetted, individualized resources in your area.



NAMI GC

Population Served: ED

Fee: Free

Contact: Jocelyn Weems, Community Outreach Coordinator or Kari Kepic, Community Education Coordinator

Organization: National Alliance on Mental Illness Greater Cleveland (NAMI GC)

Address: 2012 W. 25th Street; #705; Cleveland, OH 44113

Phone: 216-875-7776

Email: kkepic@namicleveland.org or jweems@namicleveland.org or info@namicleveland.org

Website: <http://namigreatercleveland.org/>

Descriptor: We provide free education programs, support groups, advocacy and resources for individuals with mental illness and their families/caregivers. Our NAMI Basics class is for families/caregivers of a child 18 and under that is experiencing mental health challenges. We offer support groups for parents as well.

NEW YORK LIFE/MORGAN FINANCIAL SOLUTIONS

Contact: Wesley W. Morgan

Organization: New York Life/Morgan Financial Solutions

Address: 6100 Oak Tree Blvd. Suite #300; Independence, OH 44131

Phone: 440-350-4606

Website: www.morgan-fs.com

Email: wes@morgan-fs.com

Descriptor: Protect family assets through life insurance, long term care insurance and investments. *Special thanks to NY Life Insurance team for providing the fingerprinting and ID cards to families of children & youth with disabilities during the Summer and Beyond Fair.*

OCALI (OHIO CENTER FOR AUTISM AND LOW INCIDENCE)

Address: 470 Glenmont Avenue; Columbus, OH 43214

Phone: 614-410-0321 or 866-886-2254

Website: www.ocali.org

Descriptor: Ohio Center for Autism and Low Incidence (OCALI) serves families, educators, and professionals working with students with autism and low incidence disabilities, including autism spectrum disorders, multiple disabilities, orthopedic impairments, other health impairments, and traumatic brain injuries.

OCALI's mission is to build state- and system-wide capacity to improve their outcomes through leadership, training and professional development, technical assistance, collaboration, and technology.



General Information

OHIO COALITION FOR THE EDUCATION OF CHILDREN WITH DISABILITIES (OCECD)

Population Served: AUT, ED, MD, HI, OHI, ID, SLD, VI, OI, S/LI

Dates: All year long

Ages: Birth - 26 years of age

Fee: FREE!

Organization: The Ohio Coalition for the Education of Children with Disabilities (OCECD)

Contact: Tammie Sebastian – Information Specialist/Trainer – Cleveland office 440-882-3141
(Cuyahoga County)

Ivette Sakar – Latino Information Specialist/Trainer – NE Ohio Latino Office 216-551-0008
koshneb1@sbcglobal.net

Address: Executive Office - Marion 165 W. Center St.; Suite 302 3rd Floor; Chase Bank Building;
Marion, OH 43302

Phone: Toll Free - 740-382-5452 **Fax:** 1-740-383-6421

Email: tammies@ocecd.org

Website: www.ocecd.org

Descriptor: The Ohio Coalition for the Education of Children with Disabilities (OCECD) is a statewide nonprofit organization that serves families of infants, toddlers, children and youth with disabilities in Ohio, educators and agencies who provide services to them. OCECD works through the coalition efforts of over 40 parent and professional disability organizations and over 70 individual members which comprise the Coalition. OCECD has also been funded since 1984 to serve as the Parent Training and Information Center (PTI) for the state of Ohio from the federal government, U.S. Dept. of Education, Office for Special Education Programs.



OHIO FAMILY TO FAMILY HEALTH INFORMATION CENTER

Population Served: AUT, ED, MD, HI, OHI, TBI, ID, SLD, VI, OI, S/LI

Dates: Year-round

Ages: Up to 26 years old

Fee: Free

Organization: Ohio Family to Family Health Information Center

Contact: Amy Clawson, Northern Ohio Family Specialist

Address: 3430 Burnet Ave.; Cincinnati, OH 45229

Phone: 513-814-0674

Email: amy.clawson@cchmc.org

Website: www.ohiof2f.org

Descriptor: The Ohio Family to Family (Ohio F2F) Health Information Center helps families of children with disabilities and special health care needs navigate health care systems, disability systems, and other community services. Ohio F2F provides families and the professionals support, training, information and resources.

Ohio F2F is funded by Maternal and Child Health Bureau and the Health Resources Service Administration. We are a family-staffed, virtual center that provides free one-to-one support to families of children and youth with special health care needs. Ohio F2F works to support effective partnerships between parents and professionals. Contact us for information about:

- Health related services
- Navigating community services
- Medical Home features
- Early periodic screening diagnosis and treatment
- Transitioning to adult systems of care



PATTERNS BEHAVIORAL SERVICES SUMMER CAMP

Population Served: AUT, MD

Dates: June through August

Ages: 3-12 years

Fee: TBD

Organization: Patterns Behavioral Services

Contacts: Tina Lehman- Program Manager; Amber Taylor- Clinical Director, BCBA, COBA

Address: 100 7th Ave. Suite 224; Chardon, OH 44024

Phone: 440-286-9141

Email: tlehman@patternsbehavior.com

Website: <http://www.patternsbehavior.com>

Descriptor: We provide ABA services in home, schools and at our office. We also provide a camp in collaboration with the Geauga County YMCA throughout the summer.

PLAYHOUSE SQUARE-SENSORY FRIENDLY PROGRAMMING

Population Served: Those needing sensory-friendly programming.

Dates: All Year

Ages: All ages

Fee: Performance ticket costs will vary.

Organization: Playhouse Square

Contact: Chris Meyers

Address: 1501 Euclid Ave; Suite 200; Cleveland, OH 44115

Phone: 216-640-8601

Email: chris.meyers@playhousesquare.org

Website: www.playhousesquare.org

Descriptor: Playhouse Square is proud to commit to arts education, providing a variety of free and low-cost programs dedicated to inspiring and invigorating people of all ages, perspectives and abilities. Our sensory-friendly initiative is dedicated to increasing access and inclusion for children and families affected by autism spectrum disorders and other sensory, social and cognitive challenges. Some of our resident companies also present sensory-friendly programming.



PRENTKE ROMICH COMPANY

Address: 1022 Heyl Road; Wooster, OH 44691

Phone: 330-262-1984

Website: www.prentrom.com

Descriptor: Prentke Romich Company helps people with disabilities achieve their potential in educational, vocational, and personal pursuits. Check website for camping opportunities in Ohio and the U.S.

PUBLIC HEALTH NUTRITION SERVICES

Contact: Claire Boettler

Address: 5550 Venture Drive; Parma, OH 44130

Phone: 216-201-2001, ext. 1526

Email: cboettler@ccbh.net

Website: www.ccbh.net

Descriptor: Home and/or center based nutrition assessment, consultation, and education by a public health dietician.



RED TREEHOUSE

Population Served: AUT, ED, MD, HI, OHI, TBI, ID, SLD, VI, OI, S/LI, Substance Use Disorders

Ages: Prenatal - age 25 years

Fee: Free

Organization: RedTreehouse.org/Ronald McDonald House of Cleveland

Contact: Jeanine Carroll

Address: Ronald McDonald House of Cleveland, 10415 Euclid Avenue; Cleveland, OH 44106

Phone: 216-229-5758 x1126 **Fax:** 216-229-0556

Email: jcarroll@rmhcleveland.org

Website: www.RedTreehouse.org

Descriptor: RedTreehouse.org is a statewide program of the Ronald McDonald House® of Cleveland that supports the well-being of Ohio's families and children with challenges, disabilities, and health care needs.

The website was created by and for families and professionals to:

- Share resources that support children and empower caregivers, families, and young adults, prenatal to age 25
- Link users to organizations and events matching their needs, interests, and location
- Encourage community connections and support networks
- Serve as a resource and reference tool for timely, reliable, easy-to-access information
- Inspire hope, confidence, and self-determination

Key Features:

- Comprehensive Resource Directory
- Events Calendar
- Helpful Guides
- Interactive Map
- User Content Contribution
- Free Account and Monthly Newsletter



REPLAY FOR KIDS

Address: 600 West Sturbridge Drive; Medina, OH 44256

Phone: 330-721-8281

Email: info@replayforkids.org

Website: www.replayforkids.org

Descriptor: Our mission is to increase the availability of toys and assistive devices for children with disabilities. We do this by hosting toy repair and adaptation workshops.

RIVER ROCK ADULT DAY PROGRAM

Population Served: AUT, MD, HI, OHI, ID, VI, OI, S/LI

Dates: Year-round program

Ages: Adults

Fee: Call for information

Organization: Camp Cheerful

Contact: Director of Adult Day Services

Address: 15000 Cheerful Lane; Strongsville, OH 44136

Phone: 440-238-6200 **Fax:** 440-238-1858

Email: shawn.littell@achievementctrs.org

Website: www.campcheerful.achievementcenters.org

Descriptor: Adults with disabilities engage in our unique outdoor environment at Camp Cheerful through social, recreational and educational activities customized to each individual's special needs, abilities and interests. Activities include gardening and landscaping, cooking and housekeeping skills, exercise and sports, and horsemanship activities in the horse barn.



SKYLIGHT FINANCIAL GROUP

Population Served: AUT, ED, MD, HI, OHI, TBI, ID, SLD, VI, OI, S/LI

Dates: Ongoing

Ages: All ages

Fee: Free consultation

Organization: Skylight Special Needs Planning

Contact: Bryce Smetana

Address: 2012 West 25th Street; Suite 900; Cleveland OH 44113

Phone: 216-592-7330

Email: bsmetana@financialguide.com

Website: <https://skylightfinancialgroup.com/financial-planning/special-needs/>

Descriptor: When your family members have special needs, you face a unique set of challenges. At Skylight, our team of experienced special care planners can help you understand the financial resources that are available and develop a holistic plan for those that depend on you the most. Ensuring that your loved ones are protected from the unexpected is essential part of being a family. With a comprehensive financial plan in place, a Skylight team member can help you set up a special needs trust, implement personalized retirement strategies, and offer advice on community services and assistance programs.

SPECIAL OLYMPICS, INC

NATIONAL SPECIAL OLYMPICS, INC.

1325 G Street NW; Suite #500; Washington, D.C. 20005

202-628-3630

www.specialolympics.org

SPECIAL OLYMPICS OHIO

3303 Winchester Pike; Columbus, OH 43232

614-239-7050

www.ohiospoly.org

LOCAL AREA 12 – OHIO SPECIAL OLYMPICS

Jeff Vermillion

5311 Leavitt Road; Lorain, OH 44053

For information please call 440-282-7668 or email clevspoly@aol.com.

Descriptor: Special Olympics Ohio/Greater Cleveland is an organization who provides sports training and competition opportunities for individuals with developmental disabilities residing in Cuyahoga, Geauga, Lake, and Lorain Counties.

To be eligible for Special Olympics, an athlete must be:

- an individual who is intellectually or developmentally challenged;
- eight years old or over (ages 5 – 7 may be in training programs);
- have a valid application for participation and release form on file; and
- be a member of an accredited local Special Olympics organization.

Training is a major aspect of Special Olympics and very important because in Special Olympics, victory is secondary to striving toward one's own athletic potential and reflected in the Special Olympics oath: "Let me win, but if I cannot win, let me be brave in the attempt."



General Information

SUMMER SCHOLARSHIPS FOR RECREATIONAL SERVICES

Population Served: AUT

Ages: Ages 1-22

Fee: Free to apply. Visit www.beyondwordsfoundation.org for application.

Organization: Beyond Words Foundation for Autism

Contact: Erin Jester, Executive Director

Address: 6058 Royalton Road; North Royalton, OH 44133

Phone: 734-646-9192

Email: info@beyondwordsfoundation.org

Website: www.beyondwordsfoundation.org

Descriptor: Beyond Words Foundation for Autism is a 501c3 organization that awards scholarship to children with autism to fund recreational therapies and services. We award scholarships three times a year. Applications for summer scholarships (with services between June 1-August 31, 2020) will be available February 1, 2020. Application deadline is April 15, 2020 and must include all application materials. Please visit our website for further application details. It is through donations and fundraisers that we've made this unique source of funding available to families with financial or circumstantial need.

SUPERMOMS ASSOCIATION, INC.

Population Served: OHI, OH

Ages: Mothers who have children with disabilities

Fee: None

Organization: Supermoms Association, Inc.

Contact: Ebony Storrs

Address: 1780 East 228th Street; Cleveland, OH 44117

Phone: 216-202-9673

Email: Supermomsassociation@gmail.com

Website: <https://www.Supermomsassociation.org>

Descriptor: At SuperMoms Association, Inc., our mission is to provide support services and resources for overwhelmed mothers who care for children with special needs. By connecting mothers to community resources, self-care programming and social services, SuperMoms Association, Inc. supports these primary caregivers and eases the personal and family stressors they experience.

SuperMoms Association, Inc. sponsors the work of other community and disability-related organizations, while providing supports directly to mothers and caregivers. From our annual Mothers' Spa Day and Brunch to our self-care packages and local events, SuperMoms Association, Inc. is making a difference in the lives of mothers care for children with special needs.



TALK PLAY GROW

Population Served: AUT, MD, HI, OHI, TBI, ID, SLD, OI, S/LI

Dates: Year-round

Ages: All ages

Fee: Varies by program; accept some insurance; Jon Peterson Scholarship Provider; NEON provider

Organization: Talk Play Grow

Contact: Beth Brady M.A. CCC-SLP

Address: 1440 Rockside Rd Ste 201, Parma, OH 44134

Phone: 440-427-4433

Email: Ebrady@talkplaygrowllc.com

Website: www.talkplaygrowllc.com

Descriptor: Talk Play Grow is a therapy and enrichment center in Parma. We provide speech, physical and occupational therapy, in our center or in your home. Talk Play Grow uses a variety of evidence based practices to provide the most effective and functional therapy to our clients. Research shows that children learn best during PLAY! We use movement and play in purposeful ways, to help foster independence and generalization of skills.

We believe strongly in supporting the whole child, and work as a multi-disciplinary team to support your child's development across disciplines. Our mission is to help our clients reach their highest potential, through innovative therapy services that are effective, family centered and FUN!



General Information

THE ARC OF GREATER CLEVELAND ADULT & SCHOOL AGE ADVOCACY

Population Served: AUT, MD, HI, OHI, TBI, ID, SLD, VI, OI, S/LI

Dates: Year-round

Ages: All Ages

Fee: None

Organization: The Arc of Greater Cleveland

Contact: Cindy Norwood or Michael Drops

Address: 2421 Community College Avenue; Cleveland, OH 44115

Phone: 216-622-0755 (intake) **Fax:** 216-736-3393

Email: arcgc@thearcofgreatercleveland.org

Website: www.thearcofgreatercleveland.org

Descriptor: The Arc of Greater Cleveland has been an independent advocate fighting for the basic needs, safety, and rights of children and adults with intellectual and/or developmental disabilities by helping families secure support services, financial assistance, housing, education and training, employment, health care, and much more.

THE CENTERS FOR FAMILIES AND CHILDREN

Population Served: AUT, ED, MD, HI, OHI, ID, SLD, VI, S/LI

Contact: Emily Katzberger, Enrollment Manager or Carol Valley, Special Services Manager

Address: Administrative Office, 4500 Euclid Avenue; Cleveland, OH 44103

Phone: 216-325-9678

Email: early.learning@thecentersohio.org

Website: www.thecentersohio.org

Descriptor: The Centers for Families and Children Early Learning program focuses on servicing pregnant women and children ages 0-5 years through Home Based and Center Based Services including children with disabilities.

We work closely with parents and family members to lay the foundation for children so they can enter kindergarten ready to learn. We reach children during a crucial point in their lives and help give them an early head start for school and success in life. Year round enrollment opportunities- Free, HS, EHS, Vouchers, Private Pay, Tuition assistance programs.



General Information

UNIVERSITY HOSPITALS CLEVELAND MEDICAL CENTER DISCOVERY & WELLNESS CENTER FOR CHILDREN

Contact: Becky Weintraub

Address: 10524 Euclid Avenue; Suite 1155A; Cleveland, OH

Phone: 216-844-3922

Email: becky.weintraub@uhhospitals.org

Website: www.uhhospitals.org

Descriptor: The Discovery and Wellness Center for Children is a pediatric research center housed within the Division of Children and Adolescent Psychiatry at University Hospitals Cleveland Medical Center. We are currently offering several research based treatment programs for children and adolescents who suffer from problems such as anxiety, schizophrenia, bipolar disorder, ADHD, autism and depression. All of these programs are provided at no cost to the family. Eligibility varies for each program. We conduct a thorough intake process which will determine program eligibility. If eligible, the treatment program may include a psychiatric evaluation, laboratory tests, and study medication. The family may be seen weekly or monthly depending on program protocol timelines and swiftness of response to treatment. A member of our clinical research team along with a child psychiatrist will see the family on every treatment visit.

TRAVEL TIPS FOR THE DISABLED

AMTRAK

800-USA-RAIL

Voice 800-872-7245 & TDD 800-523-6590

www.amtrak.com

Check under PLAN – accessibility and assistance.

DISABILITY TRAVEL and RECREATION RESOURCES

www.makoa.org/travel.htm

Includes information on travel planning, travel companions, destinations, transportation, air travel, children's camps, books, and more.



PARENT MENTORS (CUYAHOGA COUNTY)

BAY VILLAGE CITY SCHOOLS

MARY WOODS
377 Dover Center Rd
Bay Village, OH 44140
(440) 617-7300 (W)
mary.woods@bayschoolsohio.org

CLEVELAND HEIGHTS/UNIVERSITY HEIGHTS CITY SCHOOLS

AMY KERR-JUNG
2843 Washington Blvd.
Cleveland Heights, OH 44118
(216) 932-5110
amy@reachingheights.org

CLEVELAND METROPOLITAN SCHOOLS

RAYCHELLE FAIR
1111 Superior Avenue, Ste. 1800
Cleveland, OH 44114
(216) 838-0345
raychelle.fair@clevelandmetroschools.org

CLEVELAND METROPOLITAN SCHOOLS

SAUNDRA JORDAN
1111 Superior Avenue, Ste. 1800
Cleveland, OH 44114
(216) 838-0344
saundra.jordan@clevelandmetroschools.org

CUYAHOGA HTS. LOCAL

EILEEN HAWKINS
4820 E.71 St.
Cuyahoga Hts., OH 44125
(216) 524-0424
Eileen.hawkins@esc-cc.org

INDEPENDENCE LOCAL SCHOOLS

EILEEN HAWKINS
PO Box 41066
Brecksville, OH 44141
(216) 524-0424
eileen.hawkins@esc-cc.org

EAST CLEVELAND CITY SCHOOLS

TALLAWANDA MOORE
1843 Stanwood Avenue
East Cleveland, OH 44112
(216) 249-4261; (fax) (216) 268-6480
tmoore@east-cleveland.k12.oh.us

PARMA CITY SCHOOLS

ELIZABETH CARTER
5311 Longwood Ave.
Parma, OH 44134
440-843-3940
cartere@parmacityschools.org

SHAKER CITY SCHOOLS

HOLLY PALDA
15600 South Woodland
Shaker Hts., OH 44120
216-295-4372
palda_h@shaker.org

OLON CITY SCHOOLS

ANNIE DELLAMORTE
33800 Inwood Road
Solon, OH 44139
(440) 897-9874
annie.dellamorte@solonboe.org

STRONGSVILLE CITY SCHOOLS

TERESA KARNAK
15650 Pearl Road
Strongsville, OH 44136
(440) 572-6593 (fax) (440) 572-7043
karnak@strongnet.org

